



# Online Data Tools for Economic Development

Jake Procino, Workforce Analyst/Economist  
for Multnomah County



# QualityInfo.org

## Select Economic Tools

- Current Employment Statistics (CES)
- Local Area Unemployment Statistics (LAUS)
- Quarterly Census of Employment and Wages (QCEW)
- Occupational Employment and Wage Statistics (OEWS)
- Other miscellaneous tools

# Labor Market Statistics



Find labor market information tools from the Oregon Employment Department Research Division.

## LMI Tools

### Careers

- Find a Job
- Occupation & Wage Information
- Career Explorer
- Find Employers
- Wage Conversion Calculator
- Search Biz News

### Economy

- Unemployment Rates (LAUS)
- Current Employment Estimates (CES)
- Employment & Wages by Industry (QCEW)
- Unemployment Insurance Characteristics
- Inflation Calculator
- Fast Facts Dashboard
- Benefits
- Projections

### Business

- Industry Profiles
- Businesses by Industry

### Workforce System Performance Measures

- Performance Measures Summary
- Employment Rate
- Median Earnings
- Entered Employment Rate
- Wage Gain
- Customer Satisfaction

economic information website has a new look and feel. The redesigned QualityInfo.org offers easy nav...

## Oregon's Per Capita Personal Income 2021

Oct 28

Technology Reduces Employment in the Printing Industry

[More Articles](#)

## JOB & CAREER SEARCH

Enter job title

[Find Jobs](#)

Enter career title

[Get Report](#)

# The three most-used are LAUS, CES, QCEW

The screenshot displays the Oregon Employment Department website. At the top left is the logo with the text "State of Oregon Employment Department" and the tagline "Quality Information, Informed Choices". A search bar is located at the top right. Below the logo is a navigation bar with a home icon and the following items: "Tools" (circled in red), "Regional Info", "Data", "Publications", and "Press Release".

The main content area is titled "LMI Tools" and is organized into four columns:

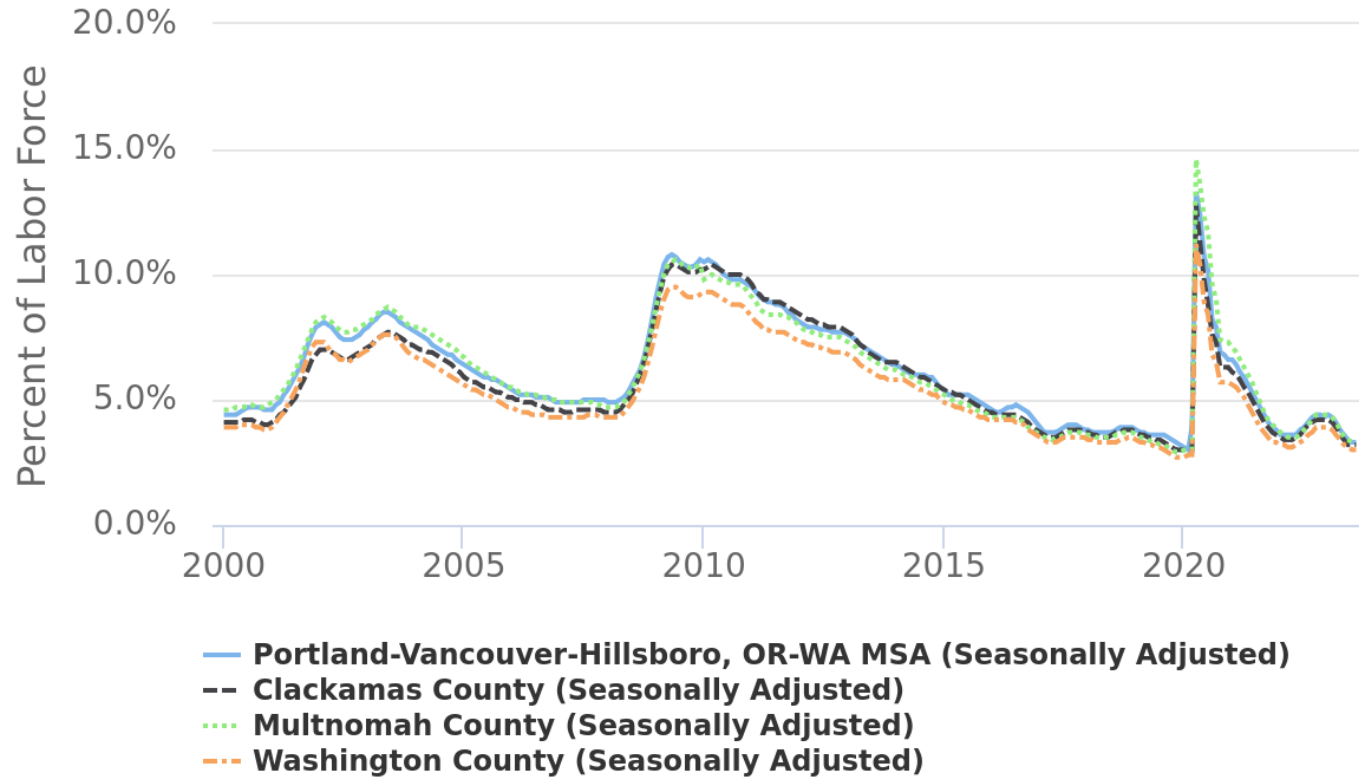
- Careers:** Find a Job, Occupation & Wage Information, Career Explorer, Find Employers, Wage Conversion Calculator, Search Biz News.
- Economy:** Unemployment Rates (LAUS), Current Employment Estimates (CES), Employment & Wages by Industry (QCEW), Unemployment Insurance Characteristics, Inflation Calculator, Fast Facts Dashboard, Benefits, Projections. A red arrow points to this column, and a red bracket highlights the three items: LAUS, CES, and QCEW.
- Business:** Industry Profiles, Businesses by Industry.
- Workforce System Performance Measures:** Performance Measures Summary, Employment Rate, Median Earnings, Entered Employment Rate, Wage Gain, Customer Satisfaction.

Below the LMI Tools section, there are three promotional blocks:

- A text block: "economic information website has a new look and feel. The redesigned QualityInfo.org offers easy nav..."
- An article preview: "Oregon's Per Capita Personal Income 2021" dated "Oct 28" with the sub-headline "Technology Reduces Employment in the Printing Industry" and a "More Articles" button.
- A "JOB & CAREER SEARCH" section with two input fields: "Enter job title" with a "Find Jobs" button, and "Enter career title" with a "Get Report" button.



# Unemployment Rate



Source: Oregon Employment Department Qualityinfo.org

# Current Employment Statistics

	Aug 2023	Jul 2023	Aug 2022	Change (month)	Change (year)	% Change (month)	% Change (year)
Oregon	1,986,900	1,988,100	1,960,800	-1,200	26,100	-0.1%	1.3%
Albany, OR MSA	46,960	47,130	48,190	-170	-1,230	-0.4%	-2.6%
Bend-Redmond, OR MSA	92,290	92,120	91,120	170	1,170	0.2%	1.3%
Corvallis, OR MSA	44,240	44,340	43,440	-100	800	-0.2%	1.8%
Eugene, OR MSA	162,200	162,300	161,600	-100	600	-0.1%	0.4%
Grants Pass, OR MSA	27,140	27,080	27,270	60	-130	0.2%	-0.5%
Medford, OR MSA	88,530	89,200	89,110	-670	-580	-0.8%	-0.7%
Portland-Vancouver-Hillsboro, OR-WA MSA	1,251,500	1,249,500	1,233,700	2,000	17,800	0.2%	1.4%
Salem, OR MSA	179,100	178,700	176,600	400	2,500	0.2%	1.4%
Baker County	5,450	5,490	5,500	-40	-50	-0.7%	-0.9%
Benton County	44,240	44,340	43,440	-100	800	-0.2%	1.8%
Clackamas County	171,700	171,100	169,600	600	2,100	0.4%	1.2%
Clatsop County	18,870	18,910	18,830	-40	40	-0.2%	0.2%
Columbia County	12,100	12,110	11,940	-10	160	-0.1%	1.3%
Coos County	23,180	23,260	22,620	-80	560	-0.3%	2.5%
Crook County	7,190	7,190	7,360		-170	0.0%	-2.3%
Curry County	6,920	6,920	6,730		190	0.0%	2.8%
Deschutes County	92,290	92,120	91,120	170	1,170	0.2%	1.3%
Douglas County	38,730	38,540	38,640	190	90	0.5%	0.2%
Gilliam County	855	870	890	-15	-35	-1.7%	-3.9%
Grant County	2,450	2,450	2,410		40	0.0%	1.7%
Harney County	2,400	2,420	2,430	-20	-30	-0.8%	-1.2%
Hood River County	11,970	12,030	11,910	-60	60	-0.5%	0.5%
Jackson County	88,530	89,200	89,110	-670	-580	-0.8%	-0.7%
Jefferson County	6,610	6,550	6,390	60	220	0.9%	3.4%
Josephine County	27,140	27,080	27,270	60	-130	0.2%	-0.5%
Klamath County	23,450	23,480	23,370	-30	80	-0.1%	0.3%
Lake County	2,210	2,270	2,240	-60	-30	-2.6%	-1.3%
Lane County	162,200	162,300	161,600	-100	600	-0.1%	0.4%
Lincoln County	18,520	18,460	18,080	60	440	0.3%	2.4%
Linn County	46,960	47,130	48,190	-170	-1,230	-0.4%	-2.6%
Malheur County	12,100	12,110	11,940	-10	160	-0.1%	1.3%
Morrow County	5,670	5,650	5,520	20	150	0.4%	2.7%
Multnomah County	519,600	518,600	513,400	1,000	6,200	0.2%	1.2%
Sherman County	925	940	945	-15	-20	-1.6%	-2.1%
Tillamook County	9,490	9,500	9,320	-10	170	-0.1%	1.8%
Umatilla County	29,790	29,810	29,030	-20	760	-0.1%	2.6%
Union County	10,610	10,550	10,610	60		0.6%	0.0%
Wallowa County	2,810	2,830	2,670	-20	140	-0.7%	5.2%
Wasco County	10,320	10,350	10,120	-30	200	-0.3%	2.0%
Washington County	311,100	310,700	309,200	400	1,900	0.1%	0.6%
Wheeler County	340	330	320	10	20	3.0%	6.2%
Yamhill County	35,680	35,330	35,400	350	280	1.0%	0.8%



## Covered Employment and Wages (QCEW)

Clackamas County, 1st Quarter 2023



Industry Expand All	NAICS	Ownership	Units	Employment	Wages	Quarterly Avg. Wage
— Total All Ownerships	All	All	18,563	170,425	\$2,899,245,230	\$17,012
— Total Private Coverage	All	Private	18,237	153,362	\$2,602,864,917	\$16,972
+ Natural Resources and Mining	11, 21	Private	384	3,959	\$42,194,138	\$10,658
+ Construction	23	Private	2,099	14,950	\$276,916,898	\$18,523
+ Manufacturing	31-33	Private	736	17,536	\$337,722,035	\$19,259
+ Trade, Transportation and Utilities	22, 42, 44-45, 48-49	Private	2,614	33,825	\$552,850,318	\$16,344
+ Information	51	Private	502	2,724	\$72,982,077	\$26,792
+ Financial Activities	52-53	Private	1,645	7,328	\$181,230,099	\$24,731
+ Professional and Business Services	54-56	Private	3,209	23,970	\$520,890,905	\$21,731
+ Education and Health Services	61-62	Private	2,700	25,162	\$412,714,873	\$16,402
+ Leisure and Hospitality	71-72	Private	1,192	16,235	\$114,700,919	\$7,065
+ Other Services	81	Private	1,628	6,744	\$72,932,675	\$10,814
+ Unclassified	99	Private	1,528	929	\$17,729,980	\$19,085
— Total All Government	All	All Govt.	326	17,063	\$296,380,313	\$17,370
+ Total Federal Government	All	Federal Govt.	49	1,090	\$21,735,746	\$19,941
+ Total State Government	All	State Govt.	47	1,395	\$34,228,012	\$24,536
+ Total Local Government	All	Local Govt.	230	14,579	\$240,416,555	\$16,491



Covered Employment and Wages (QCEW)  
Washington County, 1st Quarter 2023



Industry Expand All	NAICS	Ownership	Units	Employment	Wages	Quarterly Avg. Wage
- Total All Ownerships	All	All	24,335	308,225	\$6,833,807,617	\$22,171
- Total Private Coverage	All	Private	24,008	283,803	\$6,389,300,523	\$22,513
+ Natural Resources and Mining	11, 21	Private	239	2,564	\$27,138,575	\$10,584
+ Construction	23	Private	2,029	18,399	\$391,442,380	\$21,275
+ Manufacturing	31-33	Private	927	54,705	\$1,880,894,149	\$34,382
+ Trade, Transportation and Utilities	22, 42, 44-45, 48-49	Private	3,480	54,210	\$953,519,603	\$17,589
+ Information	51	Private	870	7,511	\$271,973,993	\$36,210
+ Financial Activities	52-53	Private	2,107	14,117	\$346,431,635	\$24,540
+ Professional and Business Services	54-56	Private	4,973	56,566	\$1,541,697,921	\$27,255
+ Education and Health Services	61-62	Private	3,666	38,870	\$584,002,856	\$15,025
+ Leisure and Hospitality	71-72	Private	1,685	25,811	\$186,538,797	\$7,227
+ Other Services	81	Private	1,934	9,710	\$176,887,532	\$18,217
+ Unclassified	99	Private	2,098	1,341	\$28,773,082	\$21,456
- Total All Government	All	All Govt.	327	24,422	\$444,507,094	\$18,201
+ Total Federal Government	All	Federal Govt.	30	920	\$18,986,744	\$20,638
+ Total State Government	All	State Govt.	52	2,762	\$68,083,736	\$24,650
+ Total Local Government	All	Local Govt.	245	20,740	\$357,436,614	\$17,234





# OEWS is found here

State of Oregon  
Employment Department  
Quality Information, Informed Choices

Search

Home **Tools** Regional Info Data Publications Press Release

**LMI Tools**

Find labor market information tools from the Oregon Employment Department Research Division.

Careers	Economy	Business	Workforce System Performance Measures
Find a Job	Unemployment Rates (LAUS)	Industry Profiles	Performance Measures Summary
Occupation & Wage Information	Current Employment Estimates (CES)	Businesses by Industry	Employment Rate
Career Explorer	Employment & Wages by Industry (QCEW)		Median Earnings
Find Employers	Unemployment Insurance Characteristics		Entered Employment Rate
Wage Conversion Calculator	Inflation Calculator		Wage Gain
Search Biz News	Fast Facts Dashboard		Customer Satisfaction
	Benefits		
	Projections		

economic information website has a new look and feel. The redesigned QualityInfo.org offers easy nav...

Oregon's Per Capita Personal Income 2021  
Oct 28  
Technology Reduces Employment in the Printing Industry  
[More Articles](#)

**JOB & CAREER SEARCH**

Enter job title  [Find Jobs](#)

Enter career title  [Get Report](#)



Economists (193011)  
Oregon (All Counties)



Median Hourly Wage	2020 Employment	Job Openings per Year	10-Year Growth
\$86.22	205	17	16.1%

Description

Conduct research, prepare reports, or formulate plans to address economic problems related to the production and distribution of goods and services or monetary and fiscal policy. May collect and process economic and statistical data using sampling techniques and econometric methods. Excludes "Market Research Analysts and Marketing Specialists" (13-1161).



- + Expand All
- + Job Openings Listed with the Oregon Employment Department
- + Job Openings from Other Websites
- + State of Oregon Licenses & Certifications
- + Wage Range 2022
- + Employment Outlook
- + Area Employment Projections
- + Industries of Employment
- + Educational Requirements



# Wage Range by Region

Area	10th Percentile	25th Percentile	50th Percentile (median)	75th Percentile	90th Percentile	Average Hourly	Average Annual
Oregon	\$37.31	\$45.43	\$60.77	\$83.56	\$83.56	\$63.04	\$131,128
Clackamas	\$45.90	\$83.56	\$83.56	\$83.56	\$83.56	\$75.18	\$156,376
Linn-Benton	\$25.16	\$41.87	\$51.98	\$69.40	\$76.88	\$52.57	\$109,343
Mid-Valley	\$37.78	\$43.52	\$52.51	\$60.77	\$66.76	\$52.46	\$109,116
Northwest Oregon	\$25.16	\$38.56	\$51.98	\$76.88	\$83.56	\$55.62	\$115,687
Portland Tri-County	\$41.88	\$53.77	\$83.56	\$83.56	\$83.56	\$68.38	\$142,236
Portland-Metro	\$41.88	\$53.68	\$77.45	\$83.56	\$83.56	\$67.56	\$140,527

[Data Sources and Limitations](#)

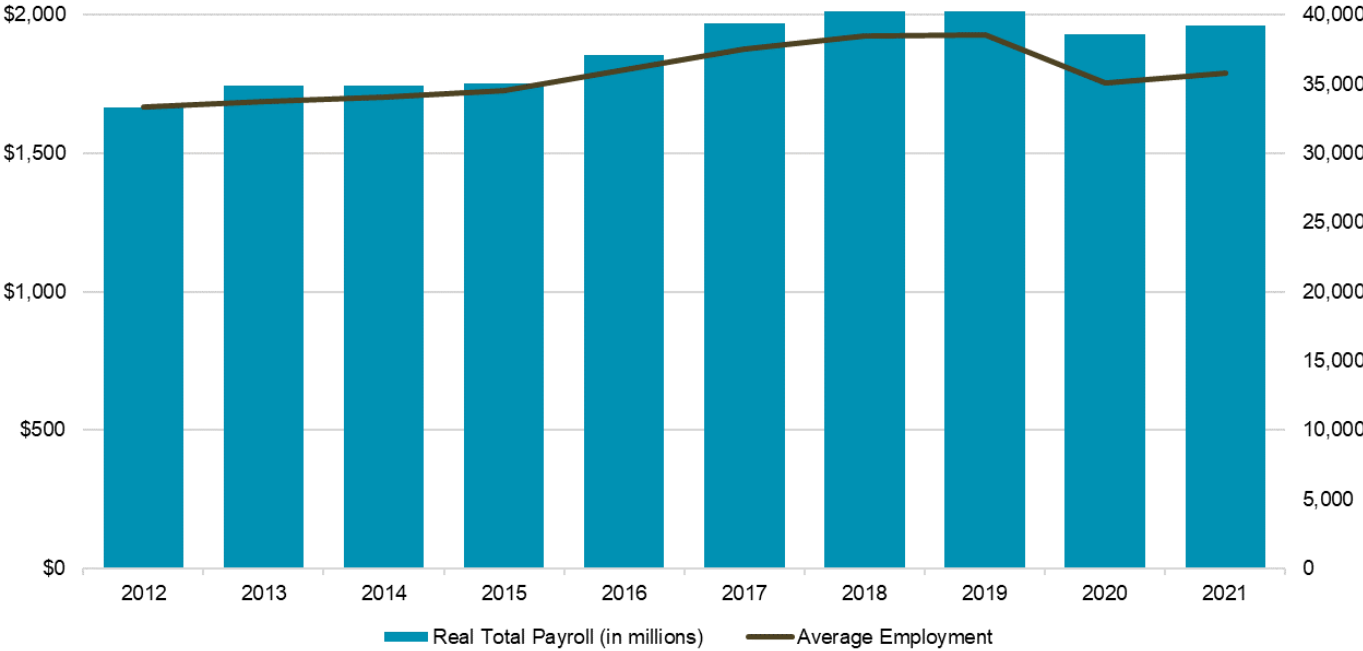


# GIS and Geocoded Data

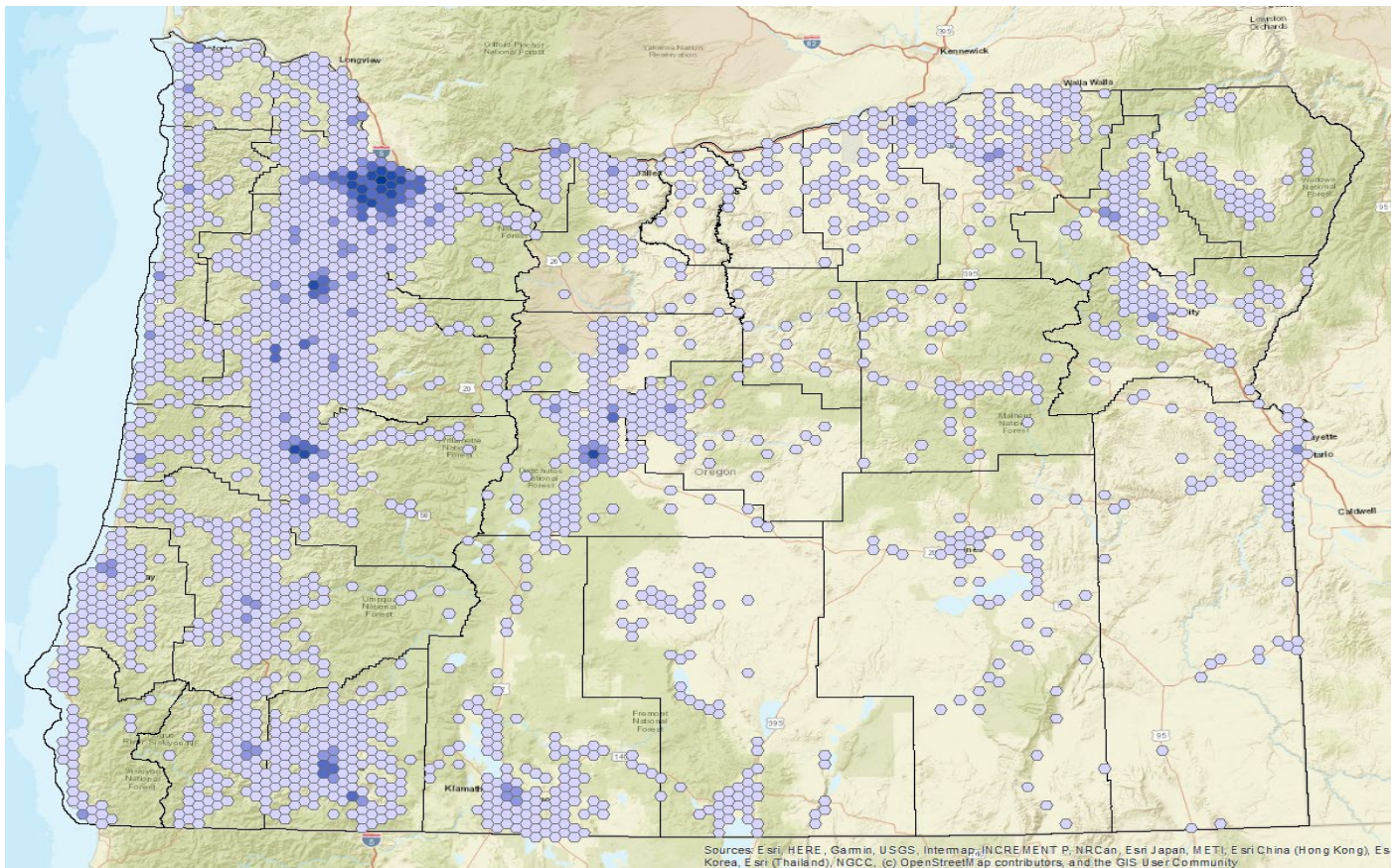


# Geocoded Employment Data

Solid Economic Growth in Gresham Over the Past Decade  
18% Growth in Real Payroll, 7% Growth in Employment



# Employment Density by 5 square mile



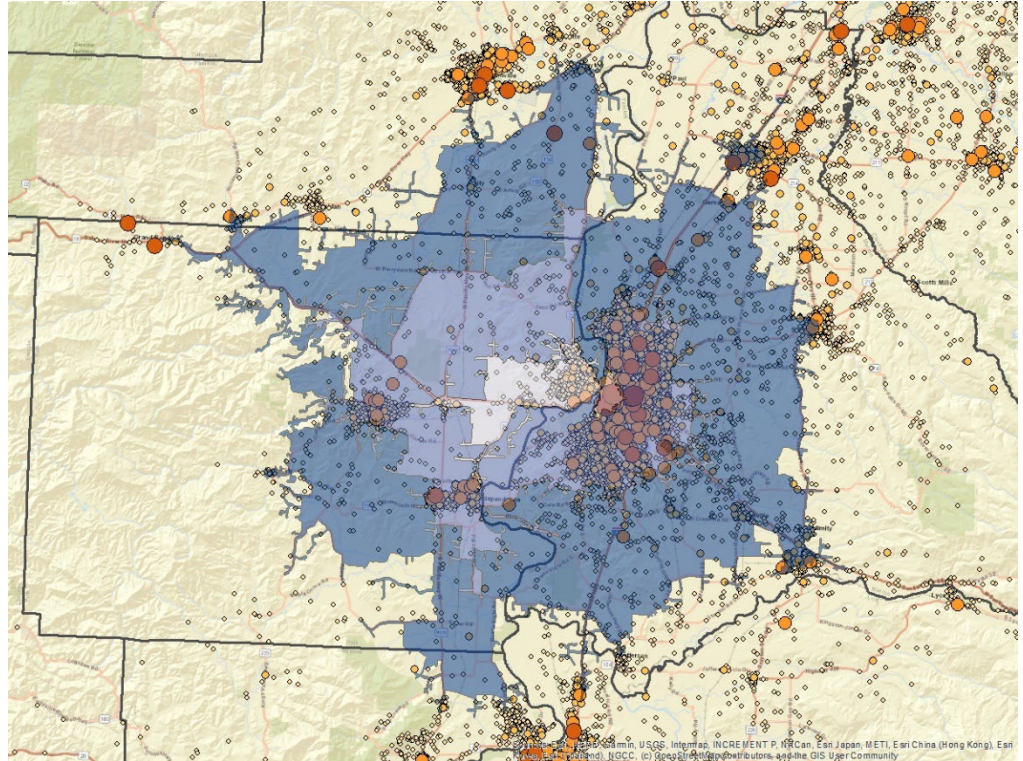
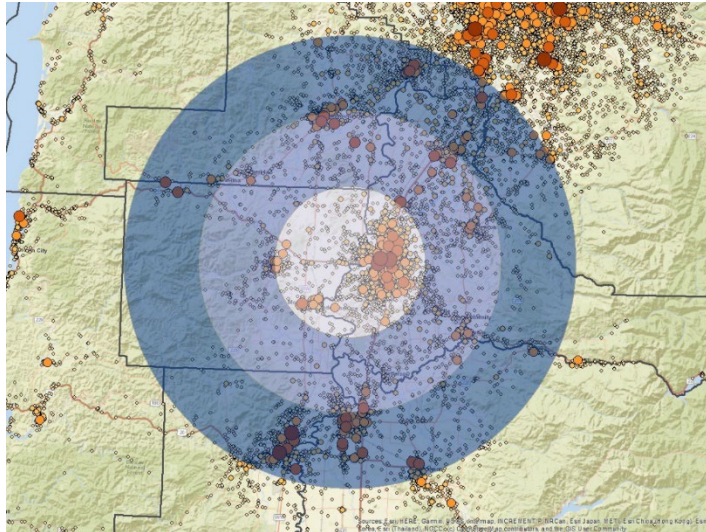
Sources: Esri, HERE, Garmin, USGS, Intermap, INCREMENT P, NRCan, Esri Japan, METI, Esri China (Hong Kong), Esri Korea, Esri (Thailand), NGCC, (c) OpenStreetMap contributors, and the GIS User Community





## Not Limited to Geographies on Tool

- School Districts
- Enterprise Zones
- Land Use Zoning
- Neighborhood
- Fire Evacuation Zones
- Tsunami Inundation Zones
- Buffers
- Custom Boundaries





# Job Vacancies

# Job Vacancy Survey

Clackamas County Job Vacancies by Occupation Group, 2022

Occupation Group	Vacancies	Average Wage
<b>All Occupations</b>	<b>11,934</b>	<b>\$21.62</b>
Food Preparation and Serving Related	1,848	\$15.58
Health Care Support	1,214	\$21.20
Construction and Extraction	1,174	\$25.32
Transportation and Material Moving	961	\$20.94
Building and Grounds Cleaning and Maintenance	850	\$16.93
Health Care Practitioners and Technical	849	\$34.93
Installation, Maintenance, and Repair	843	\$22.85
Sales and Related	754	\$20.86
Production	654	\$21.91
Office and Administrative Support	615	\$18.91
Business and Financial Operations	404	\$33.33
Personal Care and Service	323	\$15.95
Farming, Fishing, and Forestry	313	\$17.90
Protective Service	267	\$17.92
Community and Social Service	225	\$23.77
Management	210	\$27.12
Education, Training, and Library	157	\$19.87
Legal	73	\$47.95
Arts, Design, Entertainment, Sports, and Media	72	\$18.40
Computer and Mathematical	64	\$30.63
Architecture and Engineering	55	\$31.32
Life, Physical, and Social Science	9	n/a

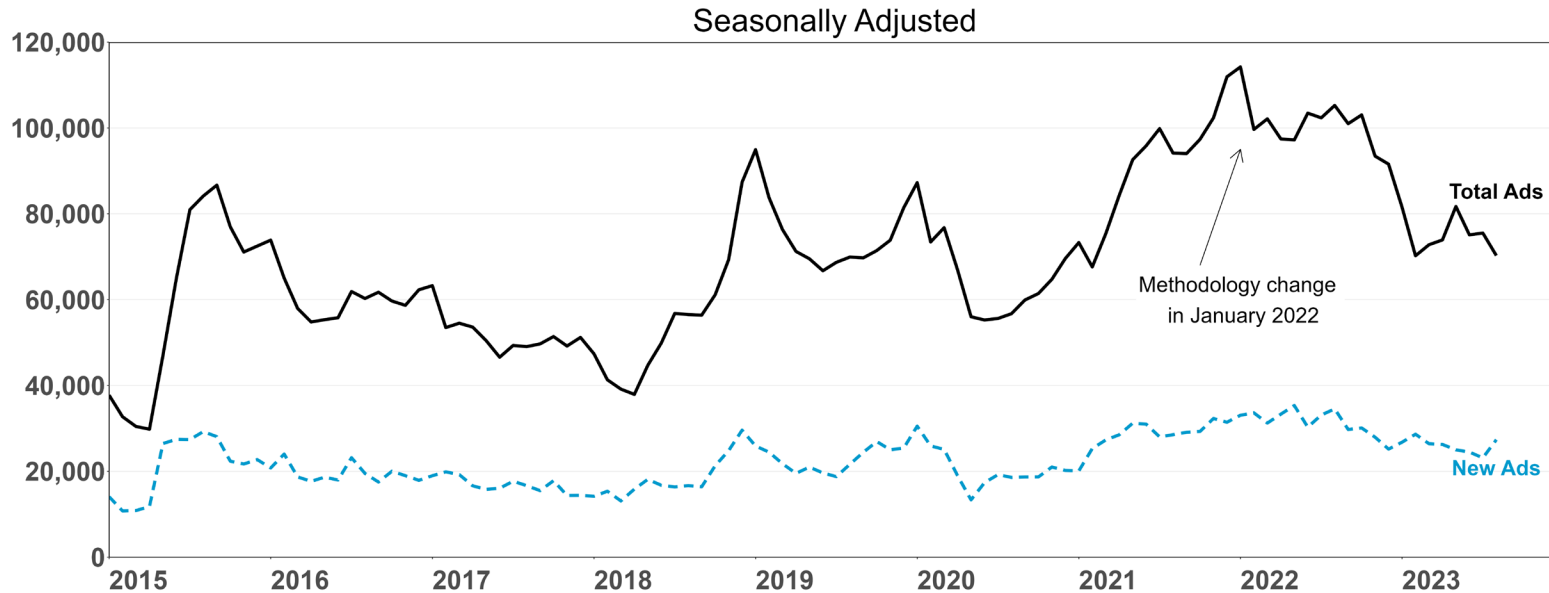
Portland Metro Job Vacancies by Occupation Group, 2022

Occupation Group	Vacancies	Average Wage
<b>All Occupations</b>	<b>30,991</b>	<b>\$24.72</b>
Office and Administrative Support	3,908	\$18.96
Food Preparation and Serving Related	3,803	\$16.67
Production	2,654	\$21.30
Transportation and Material Moving	2,543	\$19.47
Sales and Related	2,256	\$24.60
Health Care Support	2,107	\$21.00
Business and Financial Operations	2,019	\$30.61
Management	1,836	\$37.11
Health Care Practitioners and Technical	1,549	\$36.33
Construction and Extraction	1,417	\$29.00
Installation, Maintenance, and Repair	1,259	\$22.14
Personal Care and Service	1,040	\$16.63
Education, Training, and Library	993	\$24.64
Architecture and Engineering	750	\$37.15
Computer and Mathematical	636	\$56.63
Arts, Design, Entertainment, Sports, and Media	623	\$26.82
Building and Grounds Cleaning and Maintenance	579	\$17.79
Legal	470	\$30.90
Community and Social Service	251	\$28.89
Protective Service	178	\$21.15
Farming, Fishing, and Forestry	80	n/a
Life, Physical, and Social Science	40	n/a



# Help Wanted OnLine (HWOL)

The number of online ads in the Portland metro area was 70,300 in August.  
The number of new ads increased by 4,200 over the month.



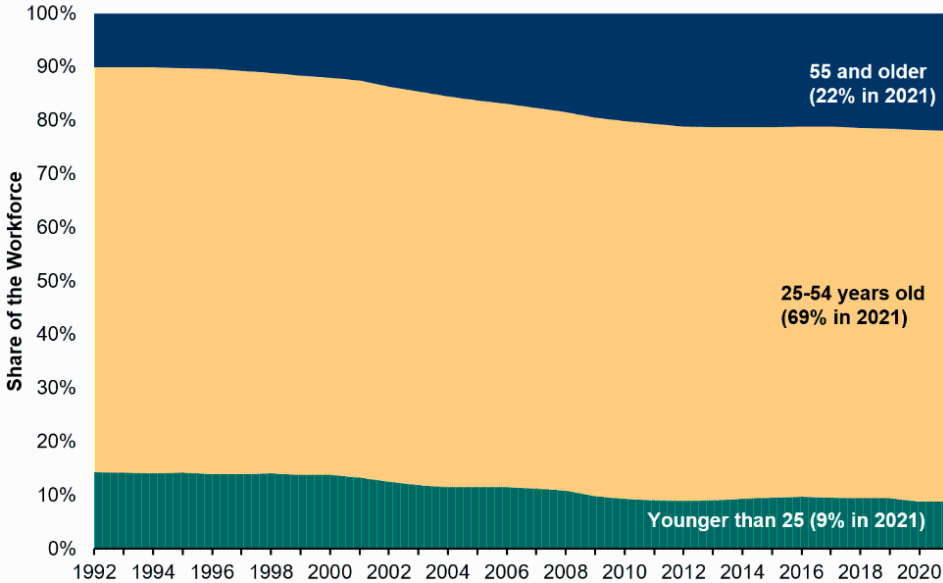
Source: The Conference Board Help Wanted OnLine™ (HWOL)



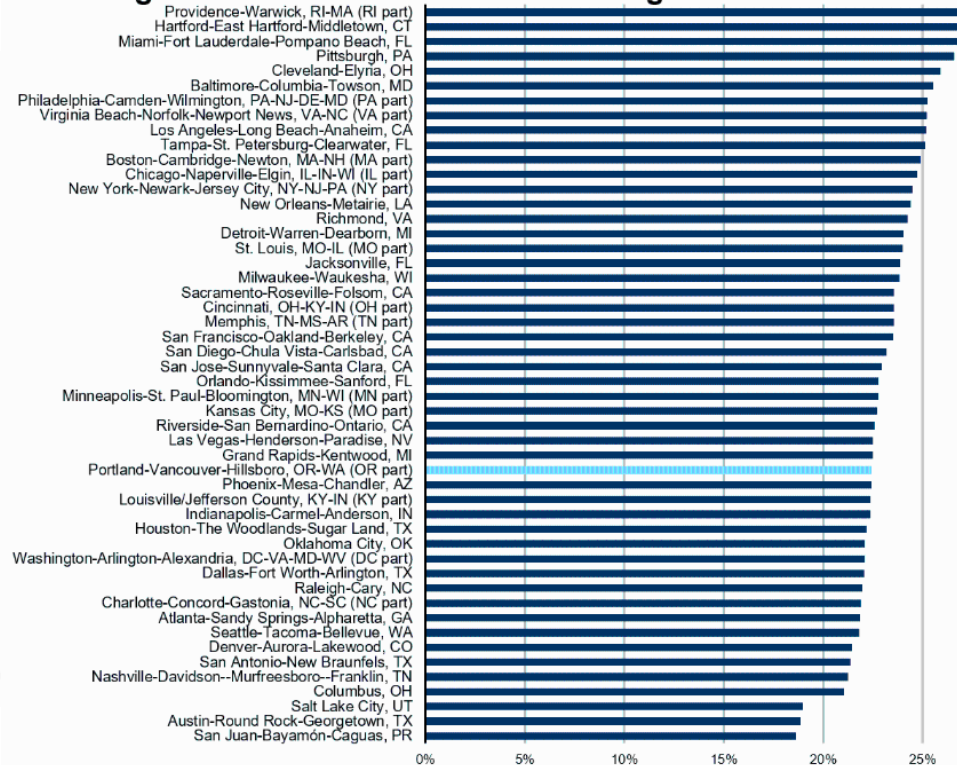
# U.S. Census Bureau Data

# Quarterly Workforce Indicators

**More Than One out of Five Multnomah County Jobs are Held by Workers Aged 55 or Older**

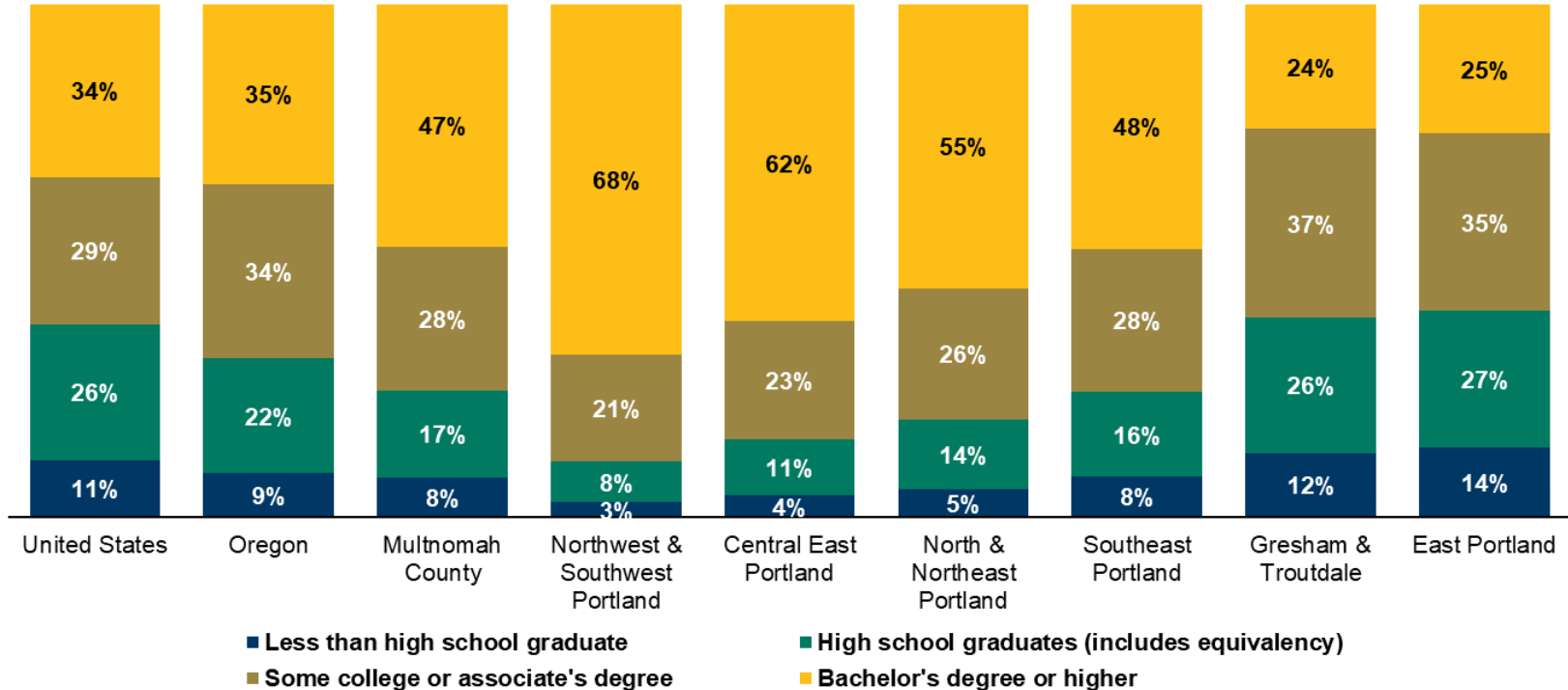


**The Largest 50 MSAs Share of Workforce Age 55 and Older**

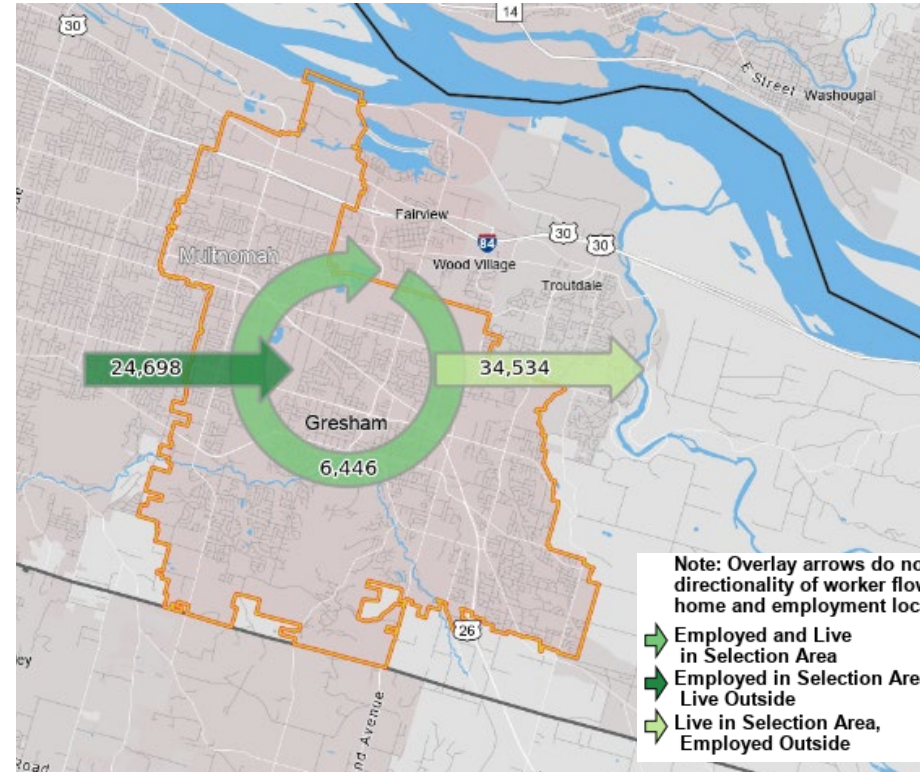


# Demographic Data: American Community Survey

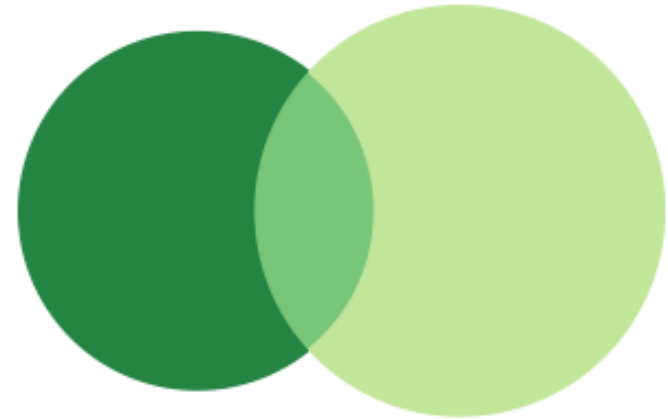
## Educational Attainment in Multnomah County



# Workflow Data: OnTheMap



Inflow/Outflow Job Counts in 2020



- 24,698 - Employed in Selection Area, Live Outside
- 34,534 - Live in Selection Area, Employed Outside
- 6,446 - Employed and Live in Selection Area

Source: Census, OnTheMap



**Jake Procino, Workforce Analyst/Economist for  
Multnomah County**

[Jake.D.Procino@employ.oregon.gov](mailto:Jake.D.Procino@employ.oregon.gov)

Get the latest workforce and economic research delivered to your inbox!

Sign up at <https://www.qualityinfo.org/p-sofrm/>

**Join the conversation:**

Twitter [@OED Research](https://twitter.com/OED_Research)