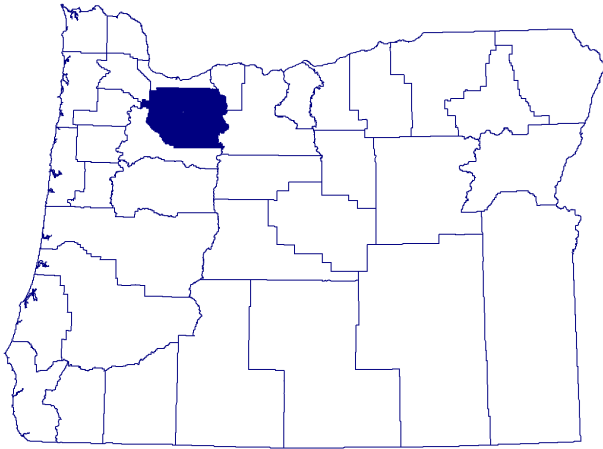


Clackamas County Quick Facts

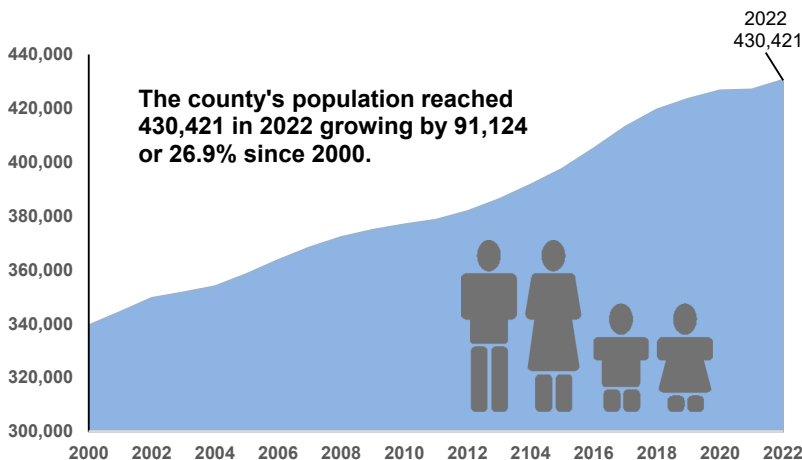
Updated 04/10/23



Clackamas County — Just the Numbers:

Land Area:	1,879 sq. miles
City, County & State Roads:	2,428 miles
Persons per sq. mile:	229
% of National Forest:	52%
2022 Population:	430,421
Civilian Labor Force:	229,236 Feb/23
Employed Labor Force:	220,112 Feb/23
Unemployment Rate:	4.0% Feb/23
2021 Average Industry Wage:	\$63,357
Per Capita Income (2021):	\$45,342

Clackamas County Population: 2000-2022



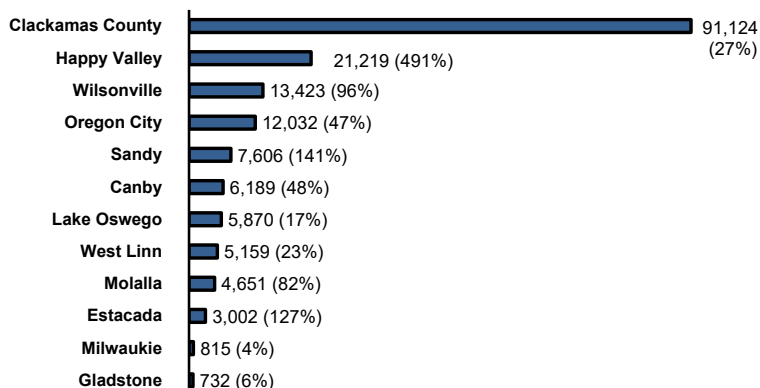
Source: PSU, Population Research Center, Certified Population Estimates: 2000-2022

Population

- Clackamas County's population reached 430,421 in 2022 and has grown by 26.9% since 2000, adding 91,124 residents.
- By 2045, the county's population is projected to reach 566,573 with 23% of its population (0-19 years), 22% (20-39 years), 27% (40-59 years), 19% (60-79 years), and 8% (80 years or older).
- Since 2000, the cities that added the most population included Happy Valley (22,170), Wilsonville (13,423), and Oregon City (12,032). The cities with the highest population growth rates included Happy Valley (491%), Sandy (141%), Estacada (127%), Wilsonville (96%), and Molalla (82%).

Population Growth: 2000-2022

Clackamas County and Incorporated Cities



Source: Population Research Center, PSU, July 1, 2000-2022 estimates

City Population Estimates - 2022

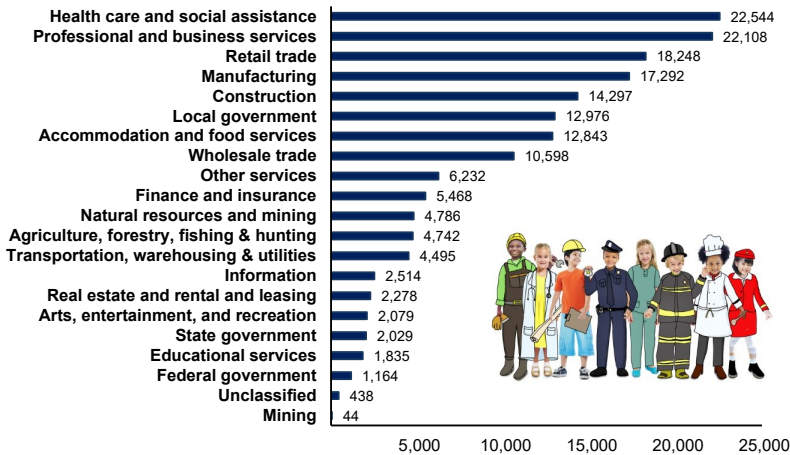
Canby	18,979
Estacada	5,373
Gladstone	12,170
Happy Valley	26,689
Johnson City	527
Lake Oswego*	41,148
Milwaukie	21,305
Molalla	10,298
Oregon City	37,786
Rivergrove*	558
Sandy	12,991
West Linn	27,420
Wilsonville*	27,414

Source: Population Research Center, PSU, July 2022 estimates

* City is located and has population in more than one county.

Industry and Labor Force

Average Broad Industry Employment, Clackamas County: 2021



Source: Oregon Employment Department, QCEW, 2021

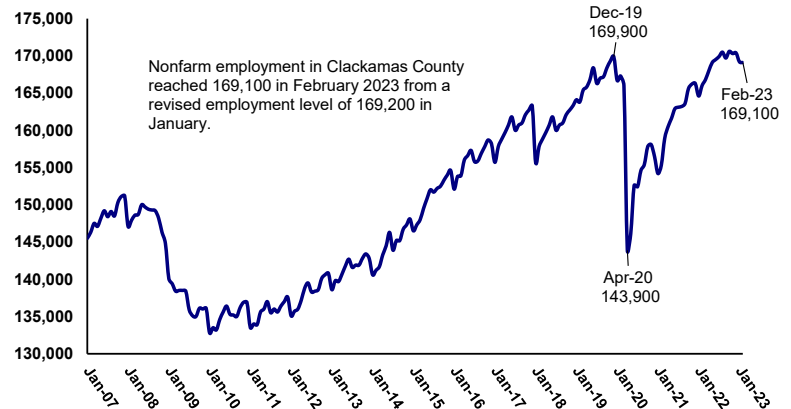
Industry Employment

- The average annual covered employment in Clackamas County was 164,224 in 2021. This was an increase of 5,287 jobs since 2020.
- Eight broad industries made up nearly three-fourths (80%) of all employment and these industries included health care and social assistance (22,544); professional and business services (22,108); retail trade (18,248); manufacturing (17,292); construction (14,297); local government (12,976); accommodation and food services (12,843); and wholesale trade (10,598).

Monthly Employment Statistics

- During the start of the pandemic, nonfarm employment in Clackamas County fell from 167,400 in February 2020 to 143,900 in April 2020 with a loss of -23,400 jobs. Since February 2023, the county has added back 25,200 or 108% of the jobs lost.
- The *seasonally adjusted* unemployment rate in Clackamas County was at 4.0% in February 2023 and has fallen by 9.8 percentage points since the highest unemployment rate in April 2020 of 13.8%.
- All incorporated cities within Clackamas County have experienced job growth since the COVID pandemic (April 2020 to February 2023). The cities with the highest number of jobs added were Oregon City (3,006) and Lake Oswego (2,951). During this period, all cities had job growth rates of 16% or above.

Monthly Nonfarm Employment: Clackamas County January 2007 to February 2023 (by place of business)



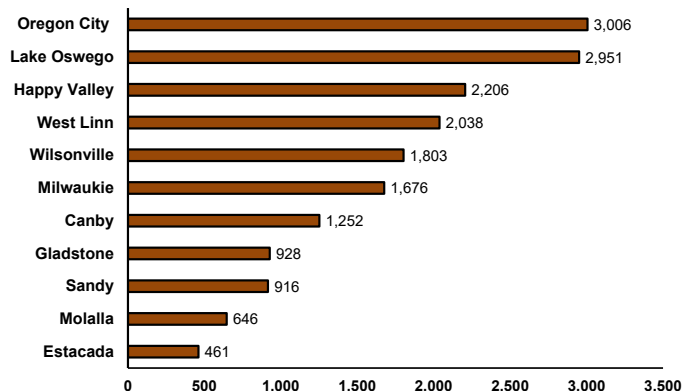
Source: Oregon Employment Department, Current Employment Statistics (not seasonally adjusted)

Clackamas County Unemployment Rate January 2006 to February 2023 (seasonally adjusted)



Source: Oregon Employment Department, LAUS

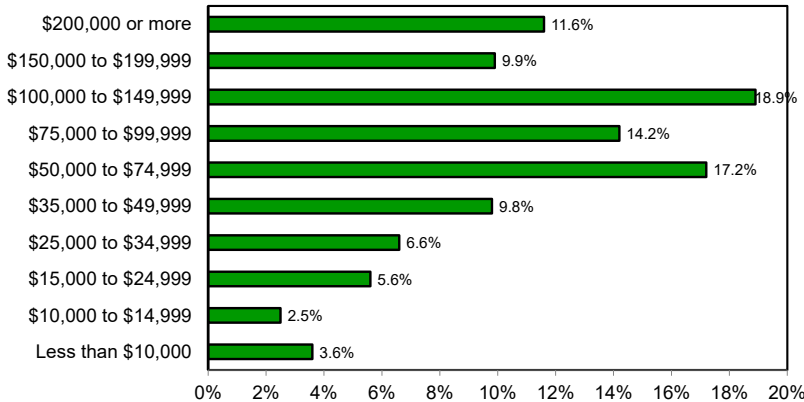
Change in Resident Employment, Incorporated Cities in Clackamas County April 2020 to February 2023



Source: Oregon Employment Department, LAUS

Household Income and Educational Attainment

Household Income
Clackamas County, 2021
(Median Household Income: \$91,329)



Source: Census, ACS, 2021, 1-Year Estimates, Table DP03

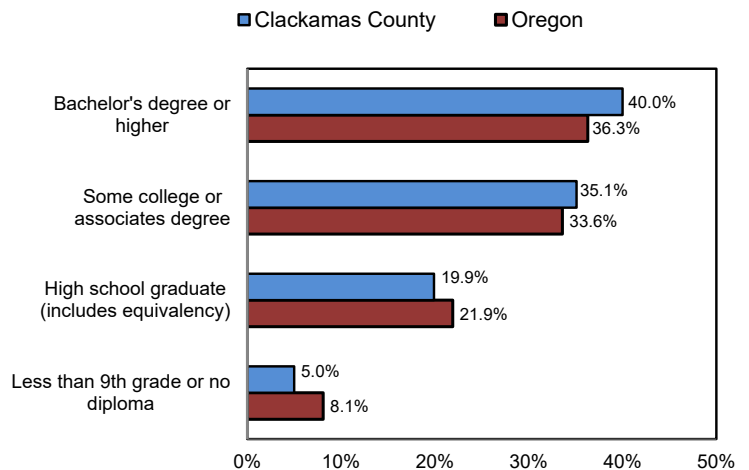
Income

- The median household income in Clackamas County during 2021 was \$91,329 compared to \$82,911 a-year-ago.
- In 2021, 11.6% or 19,803 households had incomes of less than \$25,000.
- Less than one-fifth (15.5%) or 25,094 households had incomes of \$25,000 - \$49,999.
- A little over one-fourth (26.2%) or 42,470 households had incomes of \$50,000 - \$99,999.
- Less than one-half (46%) or 74,578 households had incomes of \$100,000 or higher.

Education

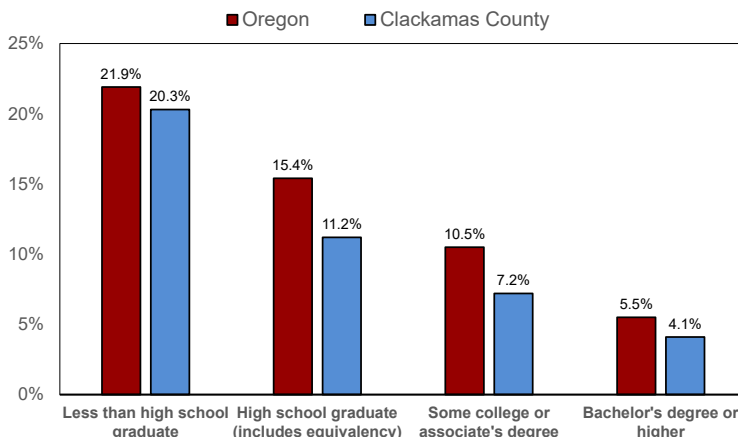
- Compared to Oregon, Clackamas County had a higher portion of its population (25 years and older) who were college educated with a bachelor's degree or higher (40%) in 2021.
- Contrastingly, the county had a lower portion of its population with less than 9th grade or no diploma (5.0%) and a slightly lower portion of its population who were high school graduates (19.9%).
- A little over one-third of both the county and state population had some college or an associates degree in 2021.

Educational Attainment: 2021
(Population 25 years and over)



Source: Census, 2021 ACS 5-year estimates, Table S1501

Poverty Rate for Population 25+ by Educational Attainment: Clackamas County and Oregon (2021)

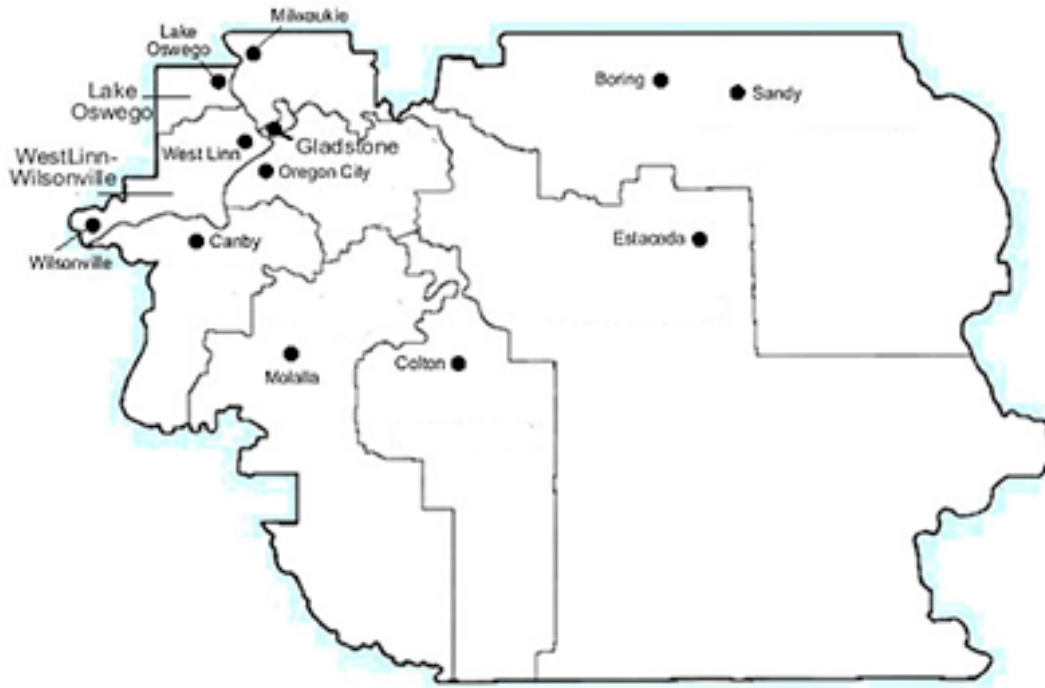


Source: Census, ACS, 2021, 1-year estimates, Table S1501

Poverty

- In 2021, the average poverty rate of all people living in Clackamas County was at 8.3 percent compared to 12.2 percent in Oregon.
- The level of educational attainment seemed to significantly influence the rate of poverty in the county in 2021.
- Clackamas County residents with less than a high school education had a much higher poverty rate at 20.3% than residents with either a high school diploma (11.2%), some college or associate's degree (7.2%), or a bachelor's degree or higher (4.1%).

Cities in Clackamas County



City Demographic Fast Facts

2021	Median Age	Bachelor's Degree or Higher (25 years and older) %	Median Household Income	People whose income in past 12 months is below the poverty level %	Veteran Status	Disability Status	Civilian noninstitutionalized population with health insurance coverage	Total households with broadband internet subscription
Clackamas County	41.4	36.8%	\$ 76,597	8.5%	8.7%	11.7%	94.4%	87.3%
Canby	37.8	25.9%	\$ 66,433	10.3%	9.7%	13.3%	93.5%	86.1%
Estacada	33.5	14.7%	\$ 60,893	8.3%	12.8%	11.7%	93.5%	70.7%
Gladstone	38.5	25.4%	\$ 61,045	13.3%	7.8%	14.8%	94.2%	81.1%
Happy Valley	38.9	54.6%	\$ 124,968	3.2%	6.2%	7.1%	96.7%	95.0%
Lake Oswego	47.0	70.1%	\$ 100,461	4.5%	6.6%	7.9%	97.0%	92.3%
Milwaukie	40.8	34.8%	\$ 63,421	10.8%	7.9%	13.1%	94.0%	87.2%
Molalla	33.7	12.9%	\$ 61,185	15.4%	9.8%	10.8%	94.9%	80.5%
Oregon City	37.9	25.5%	\$ 71,856	9.9%	8.9%	12.6%	94.1%	88.3%
Sandy	34.2	17.3%	\$ 64,296	10.9%	6.8%	13.4%	94.9%	89.3%
West Linn	42.4	60.4%	\$ 104,061	5.0%	7.3%	9.0%	97.8%	92.8%
Wilsonville	35.6	44.8%	\$ 69,043	11.0%	7.4%	8.8%	93.5%	86.5%

Source: Census, ACS, 2021 1-year estimates, Tables DP02, DP03, and B01002