

FOR IMMEDIATE RELEASE: January 28, 2025

CONTACT INFORMATION:

Brian Rooney, Regional Economist  
brian.t.rooney@employ.oregon.gov  
(541) 359-9546

## **Employment in Lane County (Eugene MSA)**

### **Lane County's Employers Add 500 Jobs in December**

Lane County's seasonally adjusted payroll employment increased by 500 jobs in December after a gain of 500 in November and a gain of 900 in October. With the December increase, Lane County has surpassed its pre-COVID-19 recession peak of 166,400 by 100 jobs.

In the not seasonally adjusted private-sector industries in December, there were gains of 100 each in transportation, warehousing, and utilities; financial activities; and health care and social assistance. There was a seasonal loss of 300 in leisure and hospitality. There were additional losses in wholesale trade (-100) and professional and business services (-100).

Government gained 100 jobs in December from a gain of 200 in local education, which was countered by a loss of 100 in federal government.

When comparing December 2024 with December 2023, total nonfarm employment added 2,600 jobs on a seasonally adjusted basis for a gain of 1.6%. There were large over-the-year gains in private education and health services (1,200), other services (300), and professional and business services (200). There were relatively large losses in manufacturing (-500) and construction (-400).

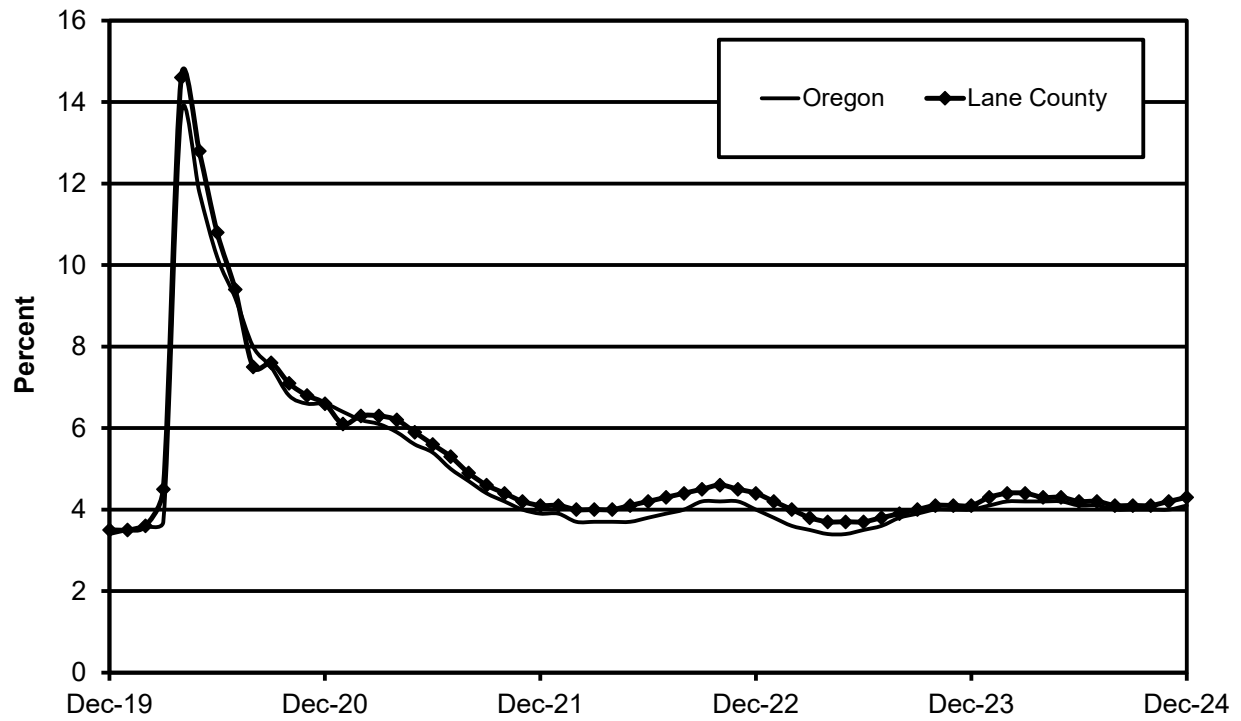
There was an over-the-year increase of 1,400 in government due to gains in local education (1,100), noneducation local government (200) and federal government (100).

Lane County's seasonally adjusted unemployment rate was essentially unchanged at 4.3% in December compared with a revised 4.2% in November. The rate is slightly higher than the 4.1% recorded in December 2023. Lane County's record low rate was 3.5% in December 2019. The Oregon seasonally adjusted December rate was 4.1% and the U.S. rate was 4.1%.

### **Next Press Releases**

The Oregon Employment Department plans to release the January county and metropolitan area unemployment rates and employment survey data on Tuesday, March 11<sup>th</sup> and the statewide unemployment rate and employment survey data for January on Monday, March 10<sup>th</sup>.

### Seasonally Adjusted Unemployment Rates





Workforce &amp; Economic Research Division

QualityInfo.org

January 28, 2025

## Eugene MSA Current Labor Force and Industry Employment

	--Change From--				
	December 2024	November 2024	December 2023	November 2024	December 2023
<b>Labor Force Status</b>					
Civilian labor force	185,889	186,532	183,253	-643	2,636
Unemployed	8,052	7,208	7,747	844	305
Unemployment rate	4.3%	3.9%	4.2%	0.4	0.1
<i>Unemployment rate (seasonally adjusted)</i>	4.3%	4.2%	4.1%	0.1	0.2
Employed	177,837	179,324	175,506	-1,487	2,331
<b>Nonfarm Payroll Employment</b>					
Total nonfarm employment	166,700	166,900	164,900	-200	1,800
<i>Total nonfarm employment (seasonally adjusted)</i>	166,500	166,000	163,900	500	2,600
Total private	133,400	133,700	133,000	-300	400
Mining, logging, and construction	8,500	8,500	8,800	0	-300
Mining and logging	1,000	1,000	900	0	100
Construction	7,500	7,500	7,900	0	-400
Manufacturing	14,200	14,200	14,700	0	-500
Durable goods	9,200	9,200	9,400	0	-200
Wood product manufacturing	3,700	3,700	3,700	0	0
Nondurable goods	5,000	5,000	5,300	0	-300
Trade, transportation, and utilities	29,600	29,600	29,800	0	-200
Wholesale trade	5,900	6,000	6,100	-100	-200
Retail trade	19,900	19,900	19,800	0	100
Food and beverage retailers	4,900	4,900	4,900	0	0
Transportation, warehousing, and utilities	3,800	3,700	3,900	100	-100
Information	1,900	1,900	2,000	0	-100
Financial activities	8,800	8,700	8,800	100	0
Professional and business services	17,700	17,800	17,500	-100	200
Administrative and support services	6,700	6,800	6,500	-100	200
Private education and health services	30,900	30,900	29,700	0	1,200
Health care and social assistance	28,300	28,200	27,600	100	700
Leisure and hospitality	16,600	16,900	16,800	-300	-200
Accommodation and food services	14,900	15,200	15,000	-300	-100
Food services and drinking places	13,400	13,600	13,500	-200	-100
Other services	5,200	5,200	4,900	0	300
Government	33,300	33,200	31,900	100	1,400
Federal government	1,900	2,000	1,900	-100	0
State government	2,000	2,000	1,900	0	100
State education	0	0	0	0	0
Local government	29,400	29,200	28,100	200	1,300
Local education	21,300	21,100	20,200	200	1,100

The most recent month is preliminary, the prior month is revised. Prepared in cooperation with the U.S. Department of Labor, Bureau of Labor Statistics.

Civilian labor force includes employed and unemployed individuals 16 years and older by place of residence.

Employed includes payroll employment, self-employed, unpaid family workers, domestics, agriculture, and labor disputants.

Unemployment rate is calculated by dividing unemployed by civilian labor force.

Nonfarm Payroll Employment: Official Oregon Series. Data are by place of work and cover full- and part-time employees who worked or received pay for the pay period that includes the 12th of the month. The data exclude the self-employed, volunteers, unpaid family workers, and domestics.

The Oregon Employment Department and the U.S. Bureau of Labor Statistics (BLS) work cooperatively to develop and publish monthly payroll employment and labor force data for Oregon's metropolitan areas and counties. The estimates of monthly job gains and losses are based on a survey of businesses. The estimates of unemployment are based on a survey of households and other sources.

The Oregon Employment Department payroll employment estimates are revised quarterly using information from unemployment insurance tax records. All department publications use data from this *official Oregon series* unless noted.

The department also makes the BLS-produced nonfarm payroll employment series for metropolitan areas available. These are revised annually by BLS.

You can subscribe to receive notification of new articles and publications from QualityInfo.org. To subscribe, go to [www.qualityinfo.org/subscribe](http://www.qualityinfo.org/subscribe), enter your email address and click Sign In. In the Publication section, click on the + sign next to a report type category and then click on the geography(s) you are interested in. Take some time to browse the other publications on the page and see if there are some you'd like to receive an email notification for. You can receive notifications on a daily, weekly, or monthly schedule – whichever is most convenient for you. You can change your preferences – or unsubscribe – at any time.

The pdf version of the news release, including tables and graphs, can be found at [www.qualityinfo.org/press-release/](http://www.qualityinfo.org/press-release/). To obtain the data in other formats such as in Excel, visit QualityInfo.org, select Tools, and choose LAUS or CES from the dropdown menu. To request the press release as a Word document, contact the person shown at the top of this press release.

To file an Unemployment Insurance claim, visit our online claims system or call our contact centers, where Employment Department staff are ready to help by phone, at 1-877-FILE-4-UI (1-877-345-3484). For help finding jobs and training resources, go to: [www.WorkSourceOregon.org](http://www.WorkSourceOregon.org).

The Oregon Employment Department (OED) is an equal opportunity agency. Everyone has a right to use OED programs and services. OED provides free help. Some examples are: Sign language and spoken language interpreters, written materials in other languages, braille, large print, audio and other formats. If you need help, please call 971-673-6400. TTY users call 711. You can also ask for help at [OED\\_Communications@employ.oregon.gov](mailto:OED_Communications@employ.oregon.gov).

El Departamento de Empleo de Oregon (OED) es una agencia de igualdad de oportunidades. El OED proporciona ayuda gratuita para que usted pueda utilizar nuestros servicios. Algunos ejemplos son intérpretes de lengua de señas e idiomas hablados, materiales escritos en otros idiomas, letra grande, audio y otros formatos. Para obtener ayuda, por favor llame al 503-947-1444. Usuarios de TTY pueden llamar al 711. También puede enviar un correo electrónico a [OED\\_Communications@employ.oregon.gov](mailto:OED_Communications@employ.oregon.gov).

###