

FOR IMMEDIATE RELEASE: December 24, 2024

CONTACT INFORMATION:
Brian Rooney, Regional Economist
brian.t.rooney@employ.oregon.gov
(541) 359-9546

Employment in Lane County (Eugene MSA)

Lane County's Employers Add 500 Jobs in November

Lane County's seasonally adjusted payroll employment increased by 500 jobs in November after a gain of 900 in October and a gain of 700 in September.

In the not seasonally adjusted private-sector industries in November, there was a seasonal gain of 500 in retail trade. There was an additional gain of 300 in private education and health care. There were seasonal losses in leisure and hospitality (-200) and construction (-100). There were additional losses in manufacturing (-200) and professional and business services (-200).

Government gained 500 jobs in November from a gain of 500 in local education, which includes the University of Oregon.

When comparing November 2024 with November 2023, total nonfarm employment added 2,400 jobs on a seasonally adjusted basis for a gain of 1.5%. There were large over-the-year gains in private education and health services (1,400), retail trade (200), and financial activities (200). There were relatively large losses in construction (-500) and manufacturing (-400).

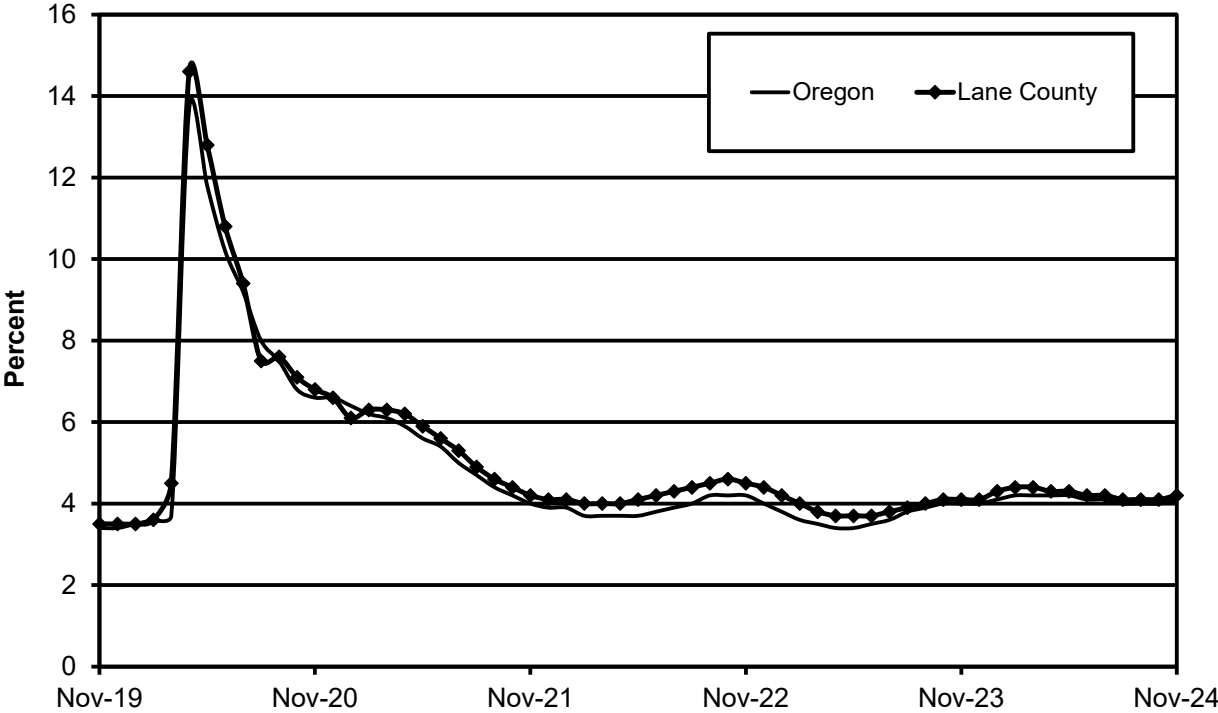
There was an over-the-year increase of 1,100 in government due to gains in local education (700), noneducation local government (200), federal government (100), and state government (100).

Lane County's seasonally adjusted unemployment rate was essentially unchanged at 4.2% in November compared with a revised 4.1% in October. The rate is the same as the 4.1% recorded in November 2023. Lane County's record low rate was 3.5% in November 2019. The Oregon seasonally adjusted November rate was 4.1% and the U.S. rate was 4.2%.

Next Press Releases

The Oregon Employment Department plans to release the December county and metropolitan area unemployment rates and employment survey data on Tuesday, Jan. 28th and the statewide unemployment rate and employment survey data for December on Thursday, Jan. 23rd.

Seasonally Adjusted Unemployment Rates





Workforce & Economic Research Division

QualityInfo.org

December 24, 2024

Eugene MSA Current Labor Force and Industry Employment

	--Change From--				
	November 2024	October 2024	November 2023	October 2024	November 2023
Labor Force Status					
Civilian labor force	186,703	186,639	183,691	64	3,012
Unemployed	7,249	7,523	7,030	-274	219
Unemployment rate	3.9%	4.0%	3.8%	-0.1	0.1
<i>Unemployment rate (seasonally adjusted)</i>	4.2%	4.1%	4.1%	0.1	0.1
Employed	179,454	179,116	176,661	338	2,793
Nonfarm Payroll Employment					
Total nonfarm employment	167,000	166,500	165,100	500	1,900
<i>Total nonfarm employment (seasonally adjusted)</i>	<i>166,000</i>	<i>165,500</i>	<i>163,600</i>	<i>500</i>	<i>2,400</i>
Total private	134,100	134,100	133,300	0	800
Mining, logging, and construction	8,500	8,600	8,900	-100	-400
Mining and logging	1,000	1,000	900	0	100
Construction	7,500	7,600	8,000	-100	-500
Manufacturing	14,200	14,400	14,600	-200	-400
Durable goods	9,200	9,300	9,300	-100	-100
Wood product manufacturing	3,700	3,700	3,700	0	0
Nondurable goods	5,000	5,100	5,300	-100	-300
Trade, transportation, and utilities	29,800	29,200	29,700	600	100
Wholesale trade	6,000	6,000	6,100	0	-100
Retail trade	20,100	19,600	19,900	500	200
Food and beverage retailers	4,900	4,900	5,000	0	-100
Transportation, warehousing, and utilities	3,700	3,600	3,700	100	0
Information	1,900	1,900	2,000	0	-100
Financial activities	8,900	9,000	8,700	-100	200
Professional and business services	17,700	17,900	17,800	-200	-100
Administrative and support services	6,700	6,900	6,800	-200	-100
Private education and health services	30,900	30,600	29,500	300	1,400
Health care and social assistance	28,100	28,000	27,400	100	700
Leisure and hospitality	17,000	17,200	17,000	-200	0
Accommodation and food services	15,200	15,500	15,200	-300	0
Food services and drinking places	13,600	13,900	13,600	-300	0
Other services	5,200	5,300	5,100	-100	100
Government	32,900	32,400	31,800	500	1,100
Federal government	2,000	2,000	1,900	0	100
State government	2,000	2,000	1,900	0	100
State education	0	0	0	0	0
Local government	28,900	28,400	28,000	500	900
Local education	20,800	20,300	20,100	500	700

The most recent month is preliminary, the prior month is revised. Prepared in cooperation with the U.S. Department of Labor, Bureau of Labor Statistics.

Civilian labor force includes employed and unemployed individuals 16 years and older by place of residence. Employed includes payroll employment, self-employed, unpaid family workers, domestics, agriculture, and labor disputants. Unemployment rate is calculated by dividing unemployed by civilian labor force.

Nonfarm Payroll Employment: Official Oregon Series. Data are by place of work and cover full- and part-time employees who worked or received pay for the pay period that includes the 12th of the month. The data exclude the self-employed, volunteers, unpaid family workers, and domestics.

The Oregon Employment Department and the U.S. Bureau of Labor Statistics (BLS) work cooperatively to develop and publish monthly payroll employment and labor force data for Oregon's metropolitan areas and counties. The estimates of monthly job gains and losses are based on a survey of businesses. The estimates of unemployment are based on a survey of households and other sources.

The Oregon Employment Department payroll employment estimates are revised quarterly using information from unemployment insurance tax records. All department publications use data from this *official Oregon series* unless noted.

The department also makes the BLS-produced nonfarm payroll employment series for metropolitan areas available. These are revised annually by BLS.

You can subscribe to receive notification of new articles and publications from QualityInfo.org. To subscribe, go to www.qualityinfo.org/subscribe, enter your email address and click Sign In. In the Publication section, click on the + sign next to a report type category and then click on the geography(s) you are interested in. Take some time to browse the other publications on the page and see if there are some you'd like to receive an email notification for. You can receive notifications on a daily, weekly, or monthly schedule – whichever is most convenient for you. You can change your preferences – or unsubscribe – at any time.

The pdf version of the news release, including tables and graphs, can be found at www.qualityinfo.org/press-release/. To obtain the data in other formats such as in Excel, visit QualityInfo.org, select Tools, and choose LAUS or CES from the dropdown menu. To request the press release as a Word document, contact the person shown at the top of this press release.

To file an Unemployment Insurance claim, visit our online claims system or call our contact centers, where Employment Department staff are ready to help by phone, at 1-877-FILE-4-UI (1-877-345-3484). For help finding jobs and training resources, go to: www.WorkSourceOregon.org.

The Oregon Employment Department (OED) is an equal opportunity agency. Everyone has a right to use OED programs and services. OED provides free help. Some examples are: Sign language and spoken language interpreters, written materials in other languages, braille, large print, audio and other formats. If you need help, please call 971-673-6400. TTY users call 711. You can also ask for help at OED_Communications@employ.oregon.gov.

El Departamento de Empleo de Oregon (OED) es una agencia de igualdad de oportunidades. El OED proporciona ayuda gratuita para que usted pueda utilizar nuestros servicios. Algunos ejemplos son intérpretes de lengua de señas e idiomas hablados, materiales escritos en otros idiomas, letra grande, audio y otros formatos. Para obtener ayuda, por favor llame al 503-947-1444. Usuarios de TTY pueden llamar al 711. También puede enviar un correo electrónico a OED_Communications@employ.oregon.gov.

###