

FOR IMMEDIATE RELEASE: November 19, 2024

CONTACT INFORMATION:

Brian Rooney, Regional Economist
brian.t.rooney@employ.oregon.gov
(541) 359-9546

Employment in Lane County (Eugene MSA)

Lane County's Employers Drop 400 Jobs in October

Lane County's seasonally adjusted payroll employment decreased by 400 jobs in October after a gain of 700 in September and a loss of 1,000 in August.

In the not seasonally adjusted private-sector industries in October, there was a gain of 300 in healthcare and social assistance. There was a seasonal loss in leisure and hospitality (-600). There was an additional loss in wholesale trade (-200).

Government gained 2,300 jobs in October from a seasonal gain of 2,200 due to a new school year in local education, which includes the University of Oregon and a gain of 100 in noneducation local government.

When comparing October 2024 with October 2023, total nonfarm employment added 700 jobs on a seasonally adjusted basis for a gain of 0.4%. There were large over-the-year gains in private education and health services (1,000) and financial activities (200). There were losses in construction (-500), manufacturing (-300), and retail trade (-200).

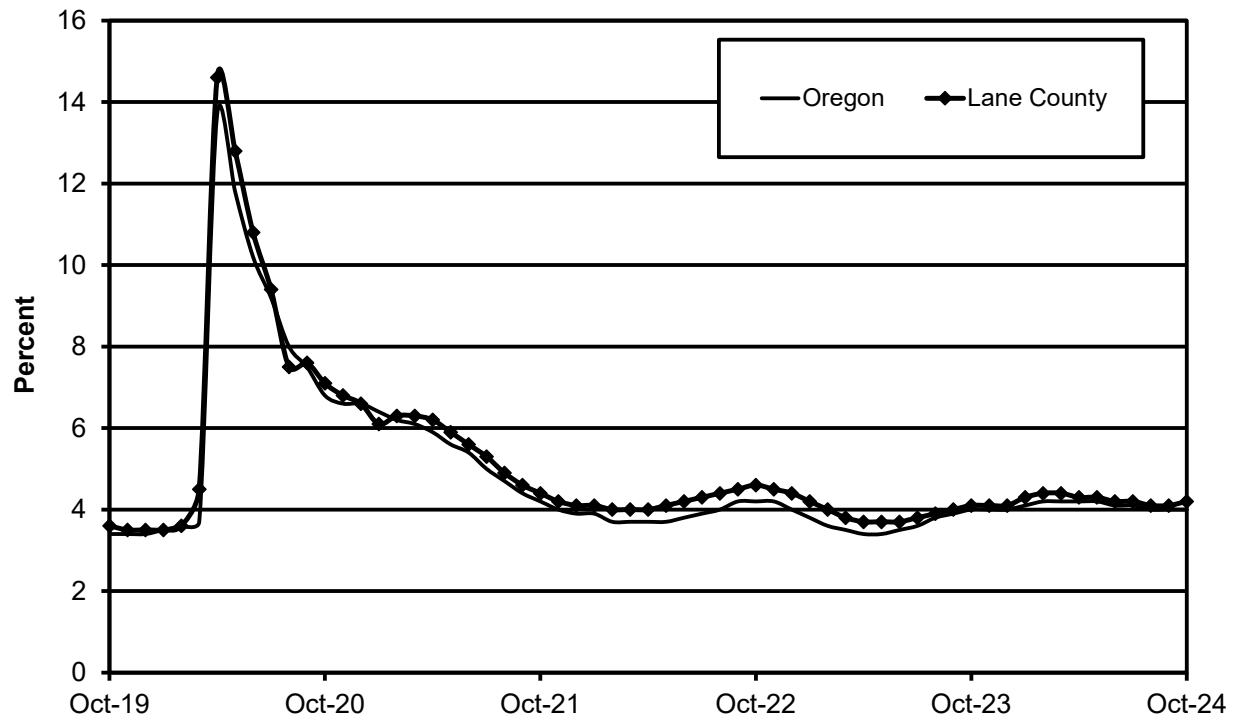
There was an over-the-year increase of 200 in government due to gains noneducation local government (300), and state government (100) that were countered by a loss of 200 in local education.

Lane County's seasonally adjusted unemployment rate was essentially unchanged at 4.2% in October compared with a revised 4.1% in September. The rate is essentially the same as the 4.1% recorded in October 2023. Lane County's record low rate was 3.5% in November 2019. The Oregon seasonally adjusted October rate was 4.0% and the U.S. rate was 4.1%.

Next Press Releases

The Oregon Employment Department plans to release the November county and metropolitan area unemployment rates and employment survey data on Tuesday, Dec. 24th and the statewide unemployment rate and employment survey data for November on Wednesday, Dec. 18th.

Seasonally Adjusted Unemployment Rates





Workforce & Economic Research Division

QualityInfo.org

November 19, 2024

Eugene MSA Current Labor Force and Industry Employment

	--Change From--				
	October 2024	September 2024	October 2023	September 2024	October 2023
Labor Force Status					
Civilian labor force	186,005	184,148	183,308	1,857	2,697
Unemployed	7,578	7,469	6,977	109	601
Unemployment rate	4.1%	4.1%	3.8%	0.0	0.3
<i>Unemployment rate (seasonally adjusted)</i>	4.2%	4.1%	4.1%	0.1	0.1
Employed	178,427	176,679	176,331	1,748	2,096
Nonfarm Payroll Employment					
Total nonfarm employment	165,100	163,800	164,700	1,300	400
<i>Total nonfarm employment (seasonally adjusted)</i>	<i>164,200</i>	<i>164,600</i>	<i>163,500</i>	<i>-400</i>	<i>700</i>
Total private	133,500	134,500	133,300	-1,000	200
Mining, logging, and construction	8,600	8,700	9,000	-100	-400
Mining and logging	1,000	1,000	900	0	100
Construction	7,600	7,700	8,100	-100	-500
Manufacturing	14,400	14,500	14,700	-100	-300
Durable goods	9,300	9,400	9,300	-100	0
Wood product manufacturing	3,700	3,800	3,700	-100	0
Nondurable goods	5,100	5,100	5,400	0	-300
Trade, transportation, and utilities	29,200	29,400	29,500	-200	-300
Wholesale trade	6,000	6,200	6,100	-200	-100
Retail trade	19,600	19,600	19,800	0	-200
Food and beverage retailers	4,900	4,900	5,000	0	-100
Transportation, warehousing, and utilities	3,600	3,600	3,600	0	0
Information	1,900	1,900	2,000	0	-100
Financial activities	8,900	8,900	8,700	0	200
Professional and business services	17,800	17,900	17,700	-100	100
Administrative and support services	6,900	7,000	6,700	-100	200
Private education and health services	30,500	30,400	29,500	100	1,000
Health care and social assistance	28,100	27,800	27,400	300	700
Leisure and hospitality	17,000	17,600	17,100	-600	-100
Accommodation and food services	15,400	15,800	15,200	-400	200
Food services and drinking places	13,800	14,100	13,700	-300	100
Other services	5,200	5,200	5,100	0	100
Government	31,600	29,300	31,400	2,300	200
Federal government	2,000	2,000	2,000	0	0
State government	2,000	2,000	1,900	0	100
State education	0	0	0	0	0
Local government	27,600	25,300	27,500	2,300	100
Local education	19,400	17,200	19,600	2,200	-200

The most recent month is preliminary, the prior month is revised. Prepared in cooperation with the U.S. Department of Labor, Bureau of Labor Statistics.

Civilian labor force includes employed and unemployed individuals 16 years and older by place of residence. Employed includes payroll employment, self-employed, unpaid family workers, domestics, agriculture, and labor disputants. Unemployment rate is calculated by dividing unemployed by civilian labor force.

Nonfarm Payroll Employment: Official Oregon Series. Data are by place of work and cover full- and part-time employees who worked or received pay for the pay period that includes the 12th of the month. The data exclude the self-employed, volunteers, unpaid family workers, and domestics.

The Oregon Employment Department and the U.S. Bureau of Labor Statistics (BLS) work cooperatively to develop and publish monthly payroll employment and labor force data for Oregon's metropolitan areas and counties. The estimates of monthly job gains and losses are based on a survey of businesses. The estimates of unemployment are based on a survey of households and other sources.

The Oregon Employment Department payroll employment estimates are revised quarterly using information from unemployment insurance tax records. All department publications use data from this *official Oregon series* unless noted.

The department also makes the BLS-produced nonfarm payroll employment series for metropolitan areas available. These are revised annually by BLS.

You can subscribe to receive notification of new articles and publications from QualityInfo.org. To subscribe, go to www.qualityinfo.org/subscribe, enter your email address and click Sign In. In the Publication section, click on the + sign next to a report type category and then click on the geography(s) you are interested in. Take some time to browse the other publications on the page and see if there are some you'd like to receive an email notification for. You can receive notifications on a daily, weekly, or monthly schedule – whichever is most convenient for you. You can change your preferences – or unsubscribe – at any time.

The pdf version of the news release, including tables and graphs, can be found at www.qualityinfo.org/press-release/. To obtain the data in other formats such as in Excel, visit QualityInfo.org, select Tools, and choose LAUS or CES from the dropdown menu. To request the press release as a Word document, contact the person shown at the top of this press release.

To file an Unemployment Insurance claim, visit our online claims system or call our contact centers, where Employment Department staff are ready to help by phone, at 1-877-FILE-4-UI (1-877-345-3484). For help finding jobs and training resources, go to: www.WorkSourceOregon.org.

The Oregon Employment Department (OED) is an equal opportunity agency. Everyone has a right to use OED programs and services. OED provides free help. Some examples are: Sign language and spoken language interpreters, written materials in other languages, braille, large print, audio and other formats. If you need help, please call 971-673-6400. TTY users call 711. You can also ask for help at OED_Communications@employ.oregon.gov.

El Departamento de Empleo de Oregon (OED) es una agencia de igualdad de oportunidades. El OED proporciona ayuda gratuita para que usted pueda utilizar nuestros servicios. Algunos ejemplos son intérpretes de lengua de señas e idiomas hablados, materiales escritos en otros idiomas, letra grande, audio y otros formatos. Para obtener ayuda, por favor llame al 503-947-1444. Usuarios de TTY pueden llamar al 711. También puede enviar un correo electrónico a OED_Communications@employ.oregon.gov.

###