

FOR IMMEDIATE RELEASE: April 1, 2025

CONTACT INFORMATION:
Brian Rooney, Regional Economist
brian.t.rooney@employ.oregon.gov
(541) 359-9546

Employment in Douglas County

Douglas County Employers Add 20 Jobs in February

Douglas County's seasonally adjusted payroll employment increased by 20 jobs in February after gains of 10 in January and 130 in December.

In the not seasonally adjusted private-sector industries in February, there were relatively large gains in leisure and hospitality (70) and construction (40). There was a relatively large loss in retail trade (-30).

Government added 80 jobs in February, due to gains in local education (70) and noneducation local government (20). These gains were countered by a loss of 10 in federal government.

When comparing February 2025 with February 2024, total nonfarm employment decreased by 70 jobs, or -0.2%. Private-sector over-the-year gains were seen in private education and health services (50), nondurable goods manufacturing (40), transportation, warehousing, and utilities (40) and leisure and hospitality (40). There were relatively large losses in retail trade (-170), professional and business services (-110), and mining and logging (-60).

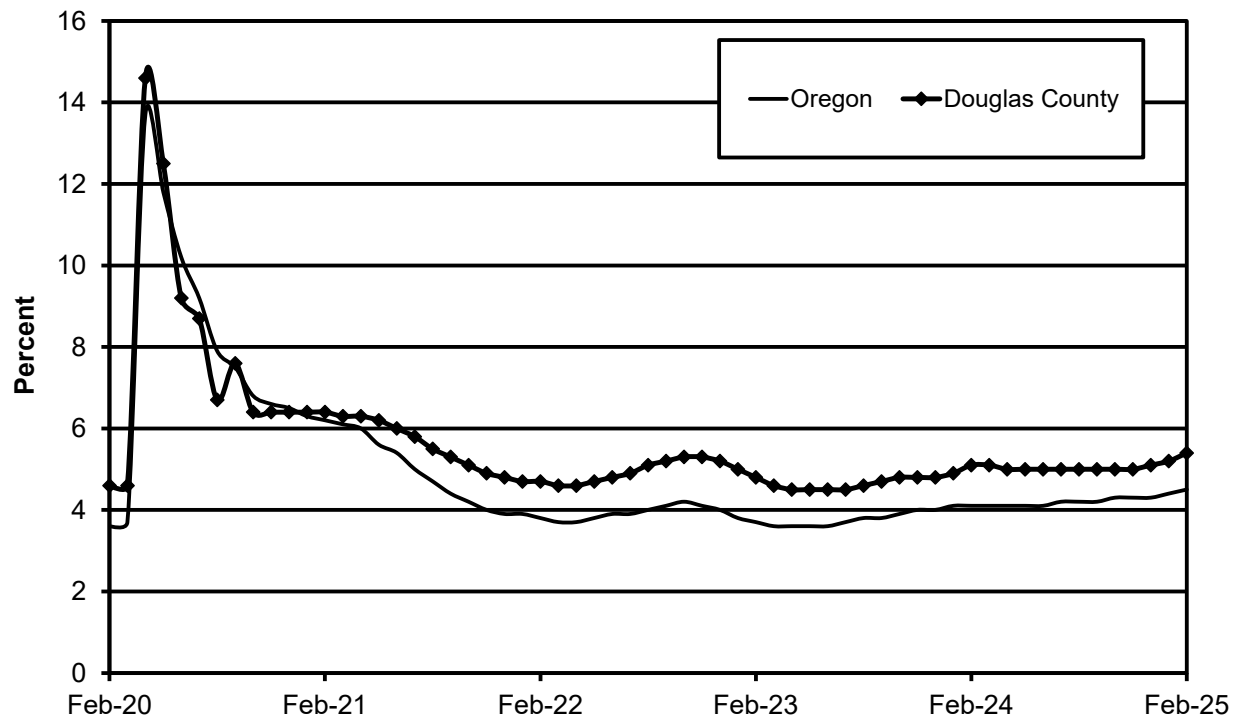
Government added 210 jobs over-the-year from gains in noneducation local government (90), local education (80), Indian tribal (30), and federal government (10).

Douglas County's seasonally adjusted unemployment rate edged up to 5.4% in February compared with a revised 5.2% in January. The rate is up from 5.1% in February 2024. Douglas County's record low unemployment rate was set in October 2019 at 4.3%. The Oregon seasonally adjusted February rate was 4.5% and the U.S. rate was 4.1%.

Next Press Releases

The Oregon Employment Department plans to release the March county and metropolitan area unemployment rates and employment survey data on Tuesday, April 22nd and the statewide unemployment rate and employment survey data for March on Wednesday, April 16th.

Seasonally Adjusted Unemployment Rates





Workforce & Economic Research Division

QualityInfo.org

April 1, 2025

Douglas County Current Labor Force and Industry Employment

	--Change From--				
	February 2025	January 2025	February 2024	January 2025	February 2024
Labor Force Status					
Civilian labor force	46,658	46,460	46,727	198	-69
Unemployed	3,014	3,053	2,741	-39	273
Unemployment rate	6.5%	6.6%	5.9%	-0.1	0.6
<i>Unemployment rate (seasonally adjusted)</i>	5.4%	5.2%	5.1%	0.2	0.3
Employed	43,644	43,407	43,986	237	-342
Nonfarm Payroll Employment					
Total nonfarm employment	38,320	38,120	38,390	200	-70
<i>Total nonfarm employment (seasonally adjusted)</i>	<i>38,650</i>	<i>38,630</i>	<i>38,720</i>	<i>20</i>	<i>-70</i>
Total private	30,330	30,210	30,610	120	-280
Mining, logging, and construction	2,480	2,430	2,560	50	-80
Mining and logging	800	790	860	10	-60
Construction	1,680	1,640	1,700	40	-20
Manufacturing	4,550	4,530	4,580	20	-30
Durable goods	4,060	4,050	4,130	10	-70
Wood product manufacturing	2,680	2,660	2,710	20	-30
Nondurable goods	490	480	450	10	40
Trade, transportation, and utilities	6,960	7,010	7,110	-50	-150
Wholesale trade	850	860	870	-10	-20
Retail trade	4,630	4,660	4,800	-30	-170
Food and beverage retailers	1,070	1,080	1,170	-10	-100
General merchandise retailers	1,130	1,150	1,120	-20	10
Transportation, warehousing, and utilities	1,480	1,490	1,440	-10	40
Information	340	340	340	0	0
Financial activities	1,300	1,310	1,330	-10	-30
Professional and business services	2,900	2,880	3,010	20	-110
Private education and health services	6,870	6,870	6,820	0	50
Leisure and hospitality	3,640	3,570	3,600	70	40
Food services and drinking places	2,870	2,820	2,840	50	30
Other services	1,290	1,270	1,260	20	30
Government	7,990	7,910	7,780	80	210
Federal government	1,420	1,430	1,410	-10	10
State government	700	700	700	0	0
Local government	5,870	5,780	5,670	90	200
Indian tribal	1,130	1,130	1,100	0	30
Local education	3,160	3,090	3,080	70	80
Local government excluding education and tribal	1,580	1,560	1,490	20	90

The most recent month is preliminary, the prior month is revised. Prepared in cooperation with the U.S. Department of Labor, Bureau of Labor Statistics.

Civilian labor force includes employed and unemployed individuals 16 years and older by place of residence. Employed includes payroll employment, self-employed, unpaid family workers, domestics, agriculture, and labor disputants. Unemployment rate is calculated by dividing unemployed by civilian labor force.

Nonfarm Payroll Employment: Data are by place of work and cover full- and part-time employees who worked or received pay for the pay period that includes the 12th of the month. The data exclude the self-employed, volunteers, unpaid family workers, and domestics.

The Oregon Employment Department and the U.S. Bureau of Labor Statistics (BLS) work cooperatively to develop and publish monthly payroll employment and labor force data for Oregon's metropolitan areas and counties. The estimates of monthly job gains and losses are based on a survey of businesses. The estimates of unemployment are based on a survey of households and other sources.

The Oregon Employment Department payroll employment estimates are revised quarterly using information from unemployment insurance tax records. All department publications use data from this *official Oregon series* unless noted.

The department also makes the BLS-produced nonfarm payroll employment series for metropolitan areas available. These are revised annually by BLS.

You can subscribe to receive notification of new articles and publications from QualityInfo.org. To subscribe, go to www.qualityinfo.org/subscribe, enter your email address and click Sign In. In the Publication section, click on the + sign next to a report type category and then click on the geography(s) you are interested in. Take some time to browse the other publications on the page and see if there are some you'd like to receive an email notification for. You can receive notifications on a daily, weekly, or monthly schedule – whichever is most convenient for you. You can change your preferences – or unsubscribe – at any time.

The pdf version of the news release, including tables and graphs, can be found at www.qualityinfo.org/press-release/. To obtain the data in other formats such as in Excel, visit QualityInfo.org, select Tools, and choose LAUS or CES from the dropdown menu. To request the press release as a Word document, contact the person shown at the top of this press release.

To file an Unemployment Insurance claim, visit our online claims system or call our contact centers, where Employment Department staff are ready to help by phone, at 1-877-FILE-4-UI (1-877-345-3484). For help finding jobs and training resources, go to: www.WorkSourceOregon.org

The Oregon Employment Department (OED) is an equal opportunity agency. Everyone has a right to use OED programs and services. OED provides free help. Some examples are: Sign language and spoken language interpreters, written materials in other languages, braille, large print, audio and other formats. If you need help, please call 971-673-6400. TTY users call 711. You can also ask for help at OED_Communications@employ.oregon.gov.

El Departamento de Empleo de Oregon (OED) es una agencia de igualdad de oportunidades. El OED proporciona ayuda gratuita para que usted pueda utilizar nuestros servicios. Algunos ejemplos son intérpretes de lengua de señas e idiomas hablados, materiales escritos en otros idiomas, letra grande, audio y otros formatos. Para obtener ayuda, por favor llame al 503-947-1444. Usuarios de TTY pueden llamar al 711. También puede enviar un correo electrónico a OED_Communications@employ.oregon.gov.

###