

FOR IMMEDIATE RELEASE: October 22, 2024

CONTACT INFORMATION:

Brian Rooney, Regional Economist
brian.t.rooney@employ.oregon.gov
(541) 359-9546

Employment in Douglas County

Douglas County Employers Add 230 Jobs in September

Douglas County's seasonally adjusted payroll employment rose by 230 jobs in September after a gain of 100 in August and a loss of 110 in July.

In the not seasonally adjusted private-sector industries in September, there were relatively large gains in private education and health services (40), and transportation, warehousing, and utilities (20). There was a seasonal loss in leisure and hospitality of 100 and an additional loss of 40 in professional and business services.

Government gained 500 jobs in September, due to a seasonal gain of 560 in local education from the beginning of a new school year, and an additional gain of 10 in federal government. These gains were countered by losses of 60 in noneducation local government and 10 in state government.

When comparing September 2024 with September 2023, total nonfarm employment increased 240 jobs, or 0.6%. Private-sector over-the-year gains were seen in manufacturing (80); retail trade (80); financial activities (60); other services (60); and transportation, warehousing, and utilities (50). There were relatively large losses in private education and health services (-110) and professional and business services (-90).

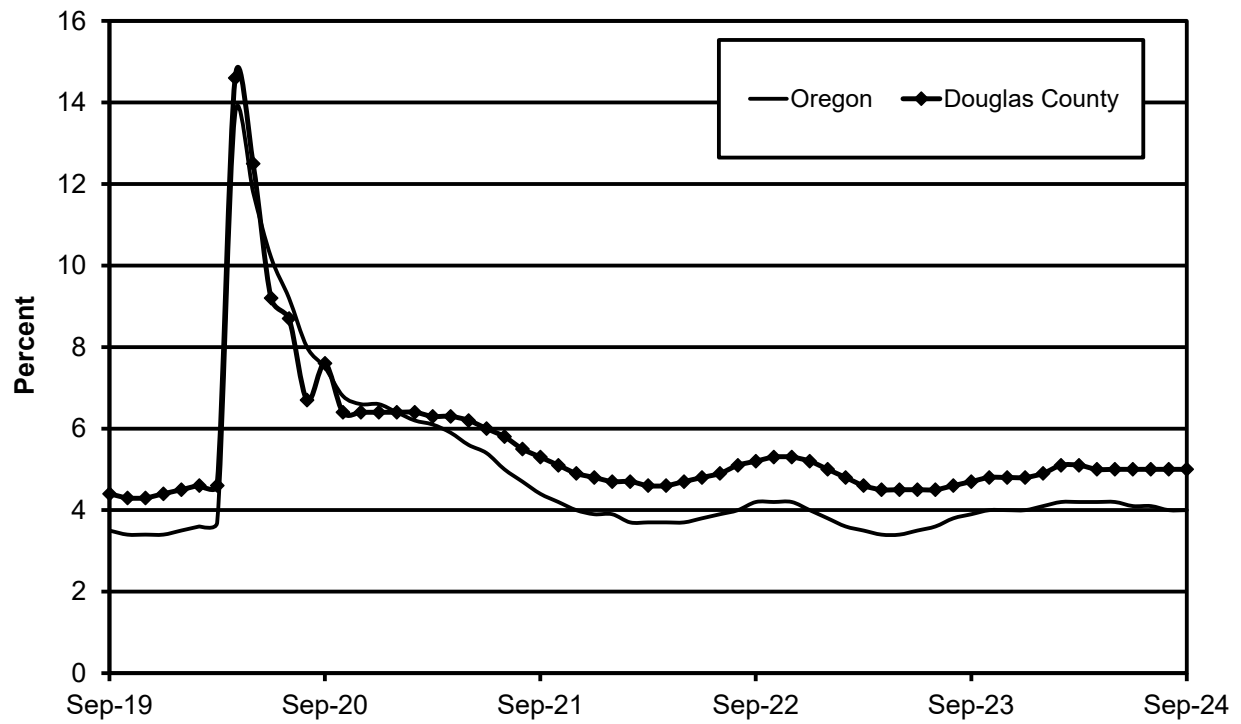
Government gained 200 jobs over the year from gains in local government (180) and federal government (20).

Douglas County's seasonally adjusted unemployment rate was unchanged at 5.0% in September compared with a revised 5.0% in August. The rate is up from 4.7% in September 2023. Douglas County's record low unemployment rate was set in October 2019 at 4.3%. The Oregon seasonally adjusted September rate was 4.0% and the U.S. rate was 4.1%.

Next Press Releases

The Oregon Employment Department plans to release the October county and metropolitan area unemployment rates and employment survey data on Tuesday, Nov. 19th and the statewide unemployment rate and employment survey data for October on Thursday, Nov. 14th.

Seasonally Adjusted Unemployment Rates





Workforce & Economic Research Division

QualityInfo.org

October 22, 2024

Douglas County Current Labor Force and Industry Employment

	--Change From--				
	September 2024	August 2024	September 2023	August 2024	September 2023
Labor Force Status					
Civilian labor force	47,868	48,024	47,140	-156	728
Unemployed	2,256	2,447	2,034	-191	222
Unemployment rate	4.7%	5.1%	4.3%	-0.4	0.4
<i>Unemployment rate (seasonally adjusted)</i>	5.0%	5.0%	4.7%	0.0	0.3
Employed	45,612	45,577	45,106	35	506
Nonfarm Payroll Employment					
Total nonfarm employment	39,270	38,870	39,010	400	260
<i>Total nonfarm employment (seasonally adjusted)</i>	39,020	38,790	38,780	230	240
Total private	31,360	31,460	31,300	-100	60
Mining, logging, and construction	2,700	2,710	2,760	-10	-60
Mining and logging	880	890	910	-10	-30
Construction	1,820	1,820	1,850	0	-30
Manufacturing	4,650	4,660	4,570	-10	80
Durable goods	4,150	4,140	4,100	10	50
Wood product manufacturing	2,680	2,680	2,680	0	0
Nondurable goods	500	520	470	-20	30
Trade, transportation, and utilities	7,340	7,300	7,200	40	140
Wholesale trade	920	910	910	10	10
Retail trade	4,910	4,900	4,830	10	80
Food and beverage retailers	1,180	1,180	1,070	0	110
General merchandise retailers	1,160	1,160	1,120	0	40
Transportation, warehousing, and utilities	1,510	1,490	1,460	20	50
Information	320	320	320	0	0
Financial activities	1,450	1,450	1,390	0	60
Professional and business services	2,970	3,010	3,060	-40	-90
Private education and health services	6,790	6,750	6,900	40	-110
Leisure and hospitality	3,860	3,960	3,880	-100	-20
Food services and drinking places	2,980	3,030	3,010	-50	-30
Other services	1,280	1,300	1,220	-20	60
Government	7,910	7,410	7,710	500	200
Federal government	1,520	1,510	1,500	10	20
State government	720	730	720	-10	0
Local government	5,670	5,170	5,490	500	180
Indian tribal	1,120	1,120	1,120	0	0
Local education	3,050	2,490	2,860	560	190
Local government excluding education and tribal	1,500	1,560	1,510	-60	-10

The most recent month is preliminary, the prior month is revised. Prepared in cooperation with the U.S. Department of Labor, Bureau of Labor Statistics.

Civilian labor force includes employed and unemployed individuals 16 years and older by place of residence.

Employed includes payroll employment, self-employed, unpaid family workers, domestics, agriculture, and labor disputants.

Unemployment rate is calculated by dividing unemployed by civilian labor force.

Nonfarm Payroll Employment: Data are by place of work and cover full- and part-time employees who worked or received pay for the pay period that includes the 12th of the month. The data exclude the self-employed, volunteers, unpaid family workers, and domestics.

The Oregon Employment Department and the U.S. Bureau of Labor Statistics (BLS) work cooperatively to develop and publish monthly payroll employment and labor force data for Oregon's metropolitan areas and counties. The estimates of monthly job gains and losses are based on a survey of businesses. The estimates of unemployment are based on a survey of households and other sources.

The Oregon Employment Department payroll employment estimates are revised quarterly using information from unemployment insurance tax records. All department publications use data from this *official Oregon series* unless noted.

The department also makes the BLS-produced nonfarm payroll employment series for metropolitan areas available. These are revised annually by BLS.

You can subscribe to receive notification of new articles and publications from QualityInfo.org. To subscribe, go to www.qualityinfo.org/subscribe, enter your email address and click Sign In. In the Publication section, click on the + sign next to a report type category and then click on the geography(s) you are interested in. Take some time to browse the other publications on the page and see if there are some you'd like to receive an email notification for. You can receive notifications on a daily, weekly, or monthly schedule – whichever is most convenient for you. You can change your preferences – or unsubscribe – at any time.

The pdf version of the news release, including tables and graphs, can be found at www.qualityinfo.org/press-release/. To obtain the data in other formats such as in Excel, visit QualityInfo.org, select Tools, and choose LAUS or CES from the dropdown menu. To request the press release as a Word document, contact the person shown at the top of this press release.

To file an Unemployment Insurance claim, visit our online claims system or call our contact centers, where Employment Department staff are ready to help by phone, at 1-877-FILE-4-UI (1-877-345-3484). For help finding jobs and training resources, go to: www.WorkSourceOregon.org

The Oregon Employment Department (OED) is an equal opportunity agency. Everyone has a right to use OED programs and services. OED provides free help. Some examples are: Sign language and spoken language interpreters, written materials in other languages, braille, large print, audio and other formats. If you need help, please call 971-673-6400. TTY users call 711. You can also ask for help at OED_Communications@employ.oregon.gov.

El Departamento de Empleo de Oregon (OED) es una agencia de igualdad de oportunidades. El OED proporciona ayuda gratuita para que usted pueda utilizar nuestros servicios. Algunos ejemplos son intérpretes de lengua de señas e idiomas hablados, materiales escritos en otros idiomas, letra grande, audio y otros formatos. Para obtener ayuda, por favor llame al 503-947-1444. Usuarios de TTY pueden llamar al 711. También puede enviar un correo electrónico a OED_Communications@employ.oregon.gov.

###