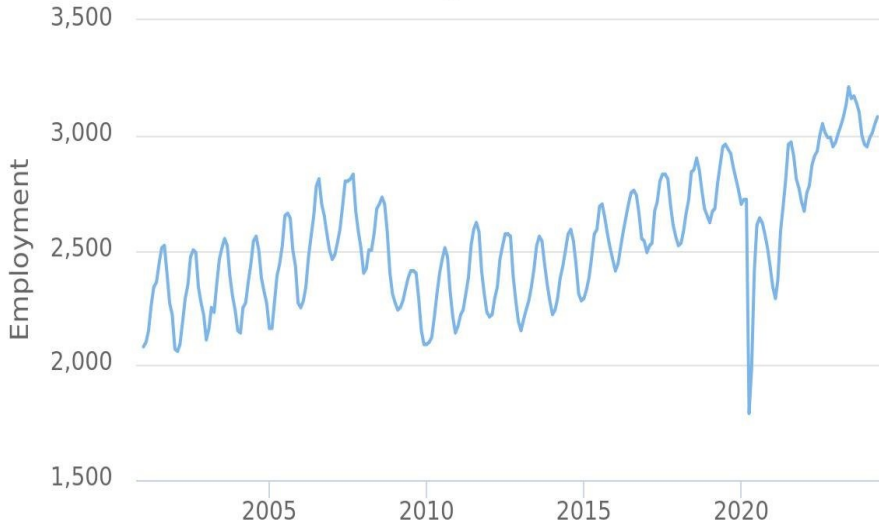


**Special Topic: The Leisure and Hospitality Industry's Pandemic Recovery**

**Coos County  
 Leisure and hospitality**

(not seasonally adjusted)  
 Official Oregon Series



Source: Oregon Employment Department, CES

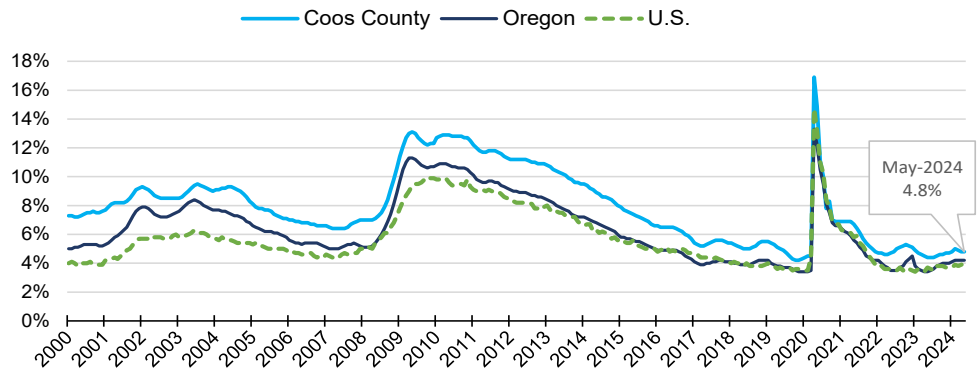
Employment in Coos County's leisure and hospitality industry contracted sharply in March 2020 at the beginning of the COVID pandemic. From March to April the sector shed 930 jobs, approximately 34%, after the first lockdown was announced.

Total jobs in the industry rebounded within three months. By June, 2,410 employees were working front desks at hotels, serving at restaurants and guiding tours along the Oregon coast. Employment in this sector didn't fully recover until June 2021.

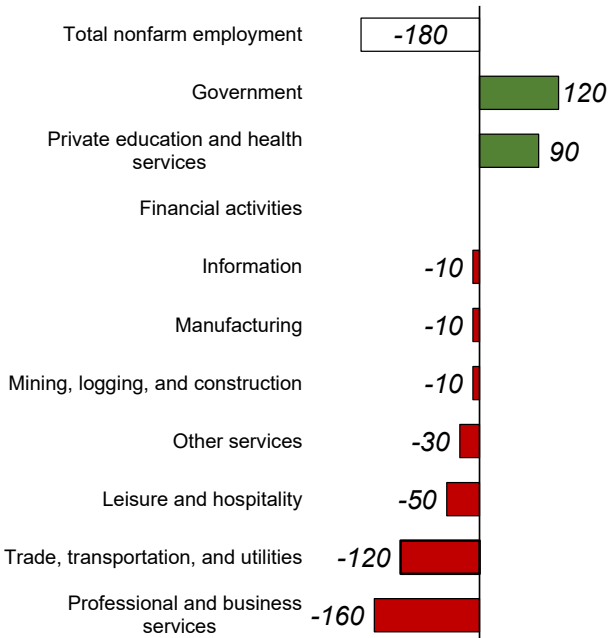
Since then employment has seen gains year over year. The industry employed 3,080 workers in 2023 compared to 2,480 in 2020, a gain of roughly 24%. Employment has increased month over month throughout 2024, as it typically does through the summer months.

**Unemployment Rate at 4.8%**

- Unemployment rate May 2023 was 4.4%
- Seasonally adjusted unemployment rate has been relatively static since early 2024



Source: Oregon Employment Department, LAUS



**Industry Employment Change: May 2023 to May 2024**

Coos County employment declined by **180 jobs** over the year

[Detailed May Employment Press Release](#)

**Jeff McAllister — Workforce Analyst for Southern Oregon**

[Jeff.S.McAllister@employ.oregon.gov](mailto:Jeff.S.McAllister@employ.oregon.gov)

(541) 414 - 5325

[QualityInfo.org](#): Your source for the latest economic data, highlights, and analysis.

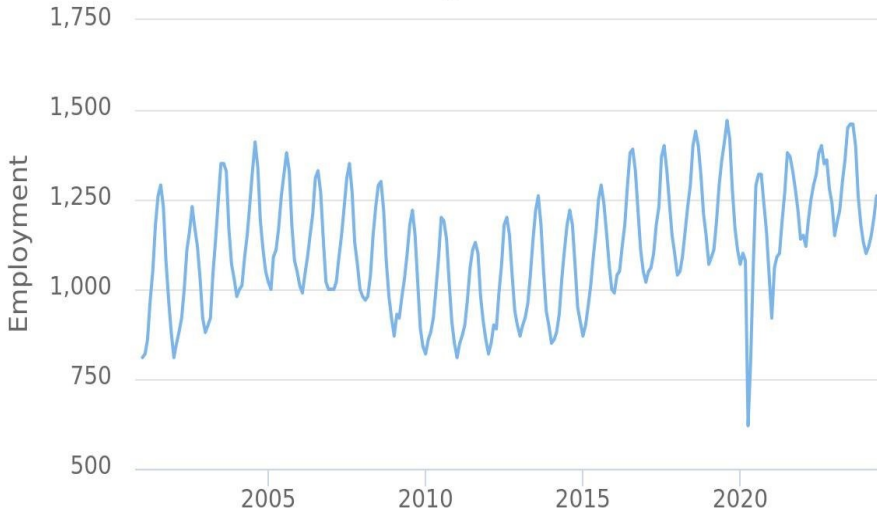
Explore more on Southwestern Oregon's economy here:

[Southwestern Oregon: The Latest Research](#)

**Special Topic: The Leisure and Hospitality Industry's Pandemic Recovery**

**Curry County  
 Leisure and hospitality**

(not seasonally adjusted)  
 Official Oregon Series



Source: Oregon Employment Department, CES

Employment in Curry County's leisure and hospitality industry contracted sharply in March 2020 at the beginning of the COVID pandemic. From March to April the sector shed 460 jobs, approximately 42.6%, after the first lockdown was announced.

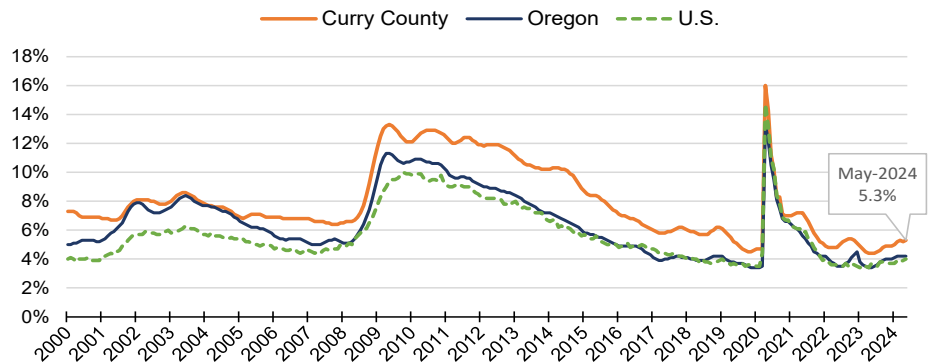
Total jobs in the industry rebounded within three months. By June, 1,070 employees were working front desks at hotels, serving at restaurants and guiding tours along the Oregon coast. Employment in this sector had fully recovered by this time.

Since then employment has seen gains year over year. The industry employed 1,300 workers in 2023 compared to 1,090 in 2020, a gain of roughly 16.2%. Employment has increased month over month throughout 2024, as it typically does through the summer months.

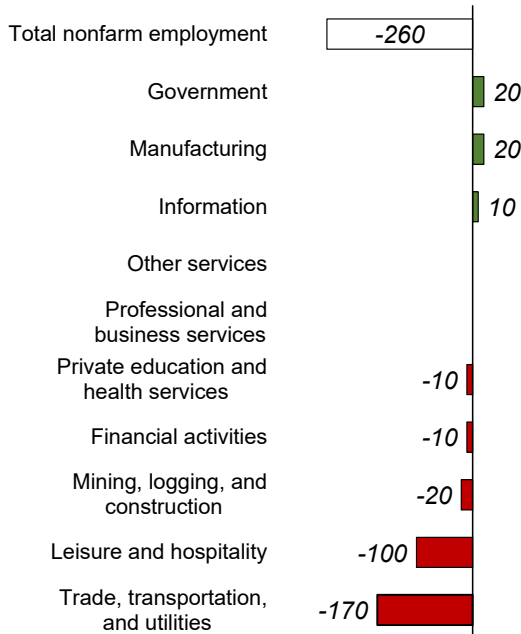
**Unemployment Rate at 5.3%**

- Seasonally adjusted unemployment rate in May 2023 was 4.4%

[More info on unemployment](#)



Source: Oregon Employment Department, LAUS



Source: Oregon Employment Department, CES

**Industry Employment Change: May 2023 to May 2024**

*Curry County employment declined by **260 jobs** over the year*

[Detailed May Employment Press Release](#)

**Jeff McAllister — Workforce Analyst for Southern Oregon**

[Jeff.S.McAllister@employ.oregon.gov](mailto:Jeff.S.McAllister@employ.oregon.gov)

(541) 414 - 5325

[QualityInfo.org](#): Your source for the latest economic data, highlights, and analysis.

Explore more on Southwestern Oregon's economy here:

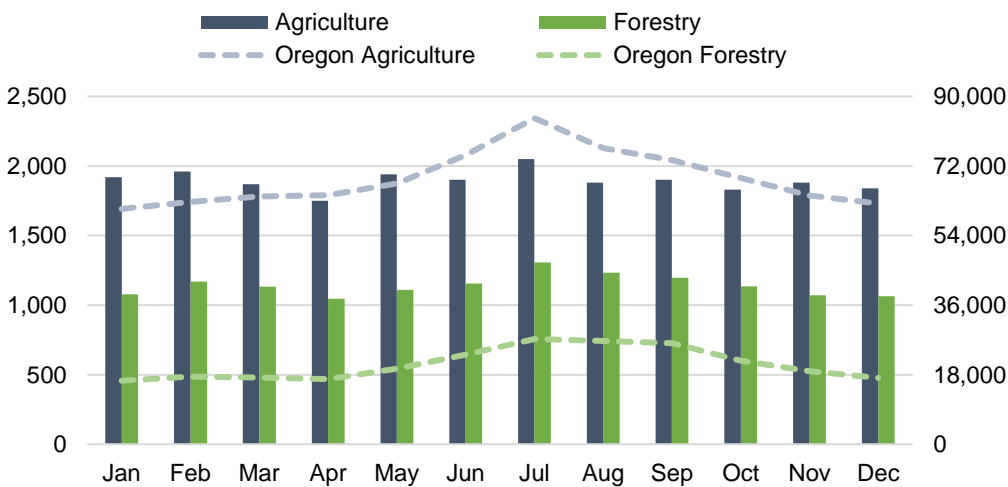
[Southwestern Oregon: The Latest Research](#)

# DOUGLAS COUNTY ECONOMIC INDICATORS

June 2024

**Graph of the Month:** Agriculture and forestry make up a larger portion of Douglas County jobs than the state average, which is unsurprising for a rural area. The local jobs are less seasonal as well—the difference between summer and winter employment was only around 20%, versus 40% statewide.

**Agriculture and Forestry Employment  
 Douglas County, 2023**



Source: Oregon Employment Department, Agricultural Employment Estimates and QCEW

## Notable Over-the-Year Employment Changes

May 2023 to May 2024

**Construction:** 80 (+5%)

**Manufacturing:** -120 (-3%)

**Private Education and Health Services:** 60 (+1%)

**Professional and Business Services:** -160 (-5%)

**All Industries:** -150 (+0%)

**Employment change from February 2020 (seasonally adjusted):**  
 -710 (-2%)

Source: [Oregon Employment Department Current Employment Estimates](#)

## News and Articles

QualityInfo: [The Changing Face of the Nursing and Residential Care Industry](#) by Lynn Wallis

QualityInfo: [Oregon's Per Capita Personal Income 2023](#) by Molly Hendrickson

Oregon Office of Economic Analysis Blog: [Oregon Economic and Revenue Forecast, June 2024](#)

## Latest Douglas County Economic Data

Unemployment rate: [5.1%](#) (seasonally adjusted)

Change from previous year: [+0.6 pct. points](#)

Per capita personal income (PCPI) in Oregon, 2023: [\\$65,426](#)

Oregon's PCPI as a share of the U.S.: [95%](#)

Business highlights: [new openings, closings & hiring events](#)

- **Expansion:**  
 Lookingglass Brewery opened a location in Winchester Bay.
- **New Firm:** Umpqua Valley Habitat for Humanity, a furniture and home supply store, will open in Roseburg.

[QualityInfo.org](#): your source for the latest economic data, highlights and analysis



Manage your subscriptions to this newsletter and other data releases on our [subscription page](#).