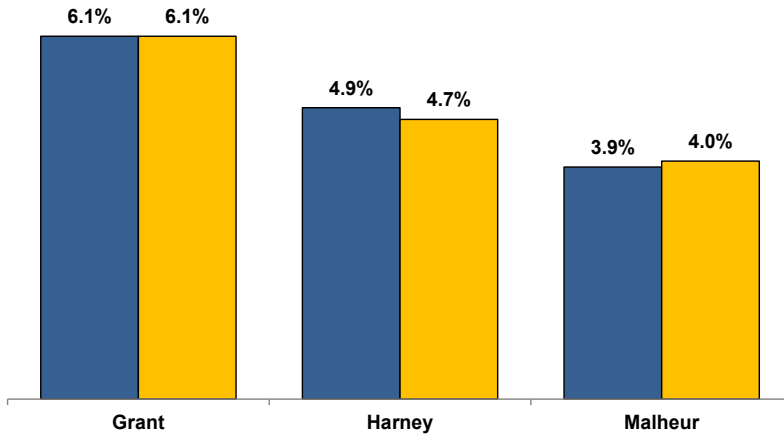


Unemployment Rates (Seasonally Adjusted)

■ October 2021 ■ October 2022



Unemployment Rate News

Malheur County's seasonally adjusted unemployment rate for October 2022 was 4.0%, while Harney County came in at 4.7% and Grant County at 6.1%. Malheur County's rate was below Oregon's statewide rate of 4.1% and all three counties' rates were above the national rate of 3.7%.

Malheur County's rate ranked in a three-way tie for 13th lowest among Oregon's 36 counties for the month while Harney County's ranked 25th and Grant County's sat at 36th.

Harney County's rate was below its October 2021 rate while Malheur County's was above the previous October's rate. Grant County's rate was unchanged from the previous year.

Since comparable statistics began in 1990, Grant and Harney counties' only lower October rates came in 2019. Malheur County only had lower October rates in 2021 and 2019.

Nonfarm Employment Change

October 2021 to October 2022

Grant County lost an estimated 10 jobs over the year. The private sector dropped 20 jobs with small losses spread across several industries. The only private industry to add jobs was retail trade. The public sector added 10 jobs with gains in local and federal government overcoming a loss in state government.

Harney County gained an estimated 60 jobs over the year. The private sector increased by 60 jobs with gains led by leisure and hospitality. No private industries lost jobs. The public sector saw a change of zero jobs with local, state, and federal government all unchanged.

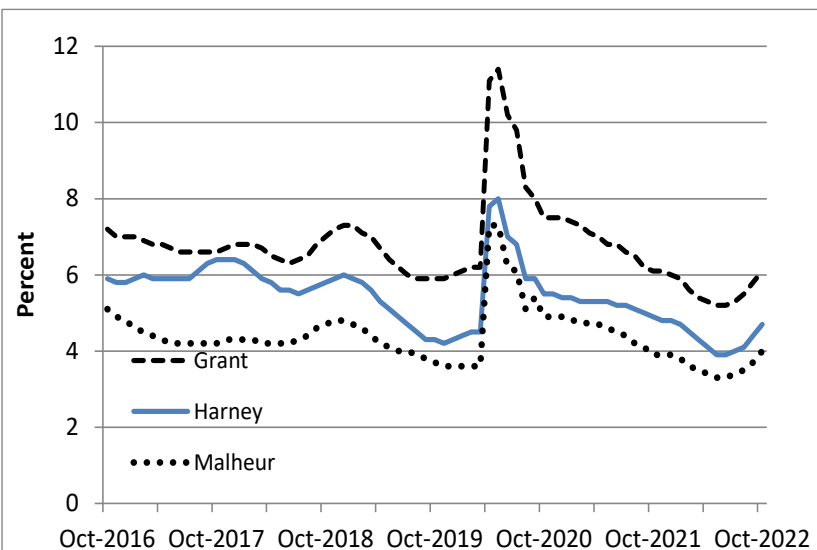
Malheur County employment increased by an estimated 30 jobs over the year. The private sector added 40 jobs led by gains in transportation, warehousing, and utilities and education and health services. Losses were led by retail trade. The public sector dropped 10 jobs with losses in local and federal government overcoming a gain in state government.

Notable Industry Gains and Losses

Over-the-Year Employment Change from October 2021

Grant	Harney	Malheur
Retail Trade (+20)	Leisure/Hospitality (+20)	Transportation/Warehousing/Utilities (+40)
Local Government (+20)	Financial Activities (+10)	Private Education/Health Services (+40)
Federal Government (+10)	Goods-producing (+10)	Wholesale Trade (+20)
	Other Services (+10)	State Government (+20)
<hr/>		
State Government (-20)		Retail Trade (-80)
Construction (-10)		Federal Government (-20)
Leisure/Hospitality (-10)		Professional/Business Services (-10)
Other Services (-10)		Local Government (-10)

Unemployment rate ticking up from historical lows (since 1990)



Want to learn more about the Oregon economy?

Follow us on Twitter at: [Twitter.com/OED_Research](https://twitter.com/OED_Research)

Visit our web site at: QualityInfo.org

Visit our subscription service at: qualityinfo.org/subscribe

For more economic or labor market data about Grant, Harney or Malheur counties, contact:

Tony Wendel, Workforce Analyst

Cell: 541-667-7027

E-mail: Tony.A.Wendel@employ.oregon.gov

Chris Rich, Regional Economist

Cell: 541-519-0315

E-mail: Christopher.M.Rich@employ.oregon.gov

Want to be added to the monthly distribution list?

E-mail me at: Tony.A.Wendel@employ.oregon.gov