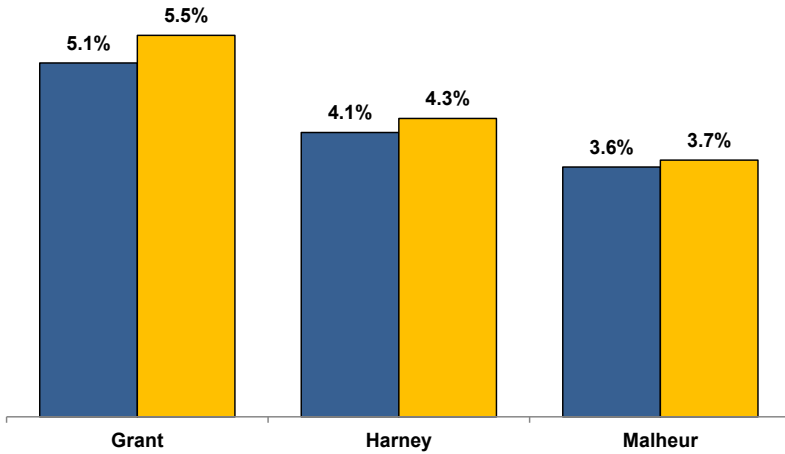


Unemployment Rates (Seasonally Adjusted)

■ August 2023 ■ August 2024



Unemployment Rate News

Malheur County's seasonally adjusted unemployment rate for August 2024 was 3.7%, while Harney County came in at 4.3% and Grant County at 5.5%. Malheur County's rate was below Oregon's statewide rate of 4.0% and the national rate of 4.2%.

Malheur County's rate ranked in a four-way tie for sixth lowest among Oregon's 36 counties for the month while Harney County's tied for 20th and Grant County's ranked 35th.

All three counties' rates were above their August 2023 rates.

Grant and Harney counties' August 2024 rates were their second lowest August rates since comparable statistics began in 1990. Malheur County's tied for its second lowest. The only lower August rates for all three counties came in 2023.

Nonfarm Employment Change

August 2023 to August 2024

Grant County lost an estimated 100 jobs over the year. The private sector decreased by 110 jobs. Manufacturing led losses. Gains were confined to construction. The public sector added 10 jobs with a gain in federal government while state government and local government went unchanged.

Harney County employment decreased by an estimated 120 jobs over the year. The private sector dropped 70 jobs led by losses in retail trade. Gains were confined to private education and health services. The public sector lost 50 jobs with losses in local government and federal government while state government went unchanged.

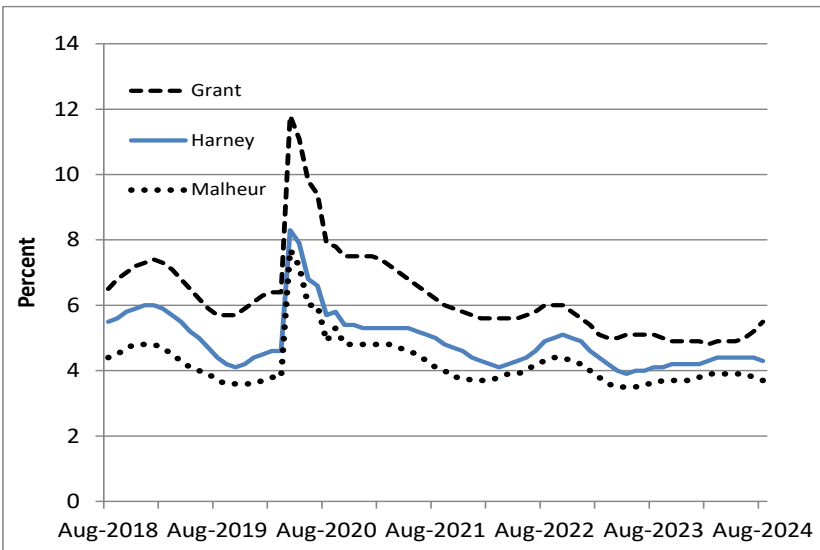
Malheur County employment increased by an estimated 20 jobs over the year. The private sector added 150 jobs led by gains in mining, logging, and construction; wholesale trade; retail trade; and private education and health services. Leisure and hospitality led losses. The public sector decreased by 130 jobs with losses in local government and federal government overwhelming a gain in state government.

Notable Industry Gains and Losses

Over-the-Year Employment Change from August 2023

Grant	Harney	Malheur
Construction (+10)	Private Education/Health Services (+20)	Mining/Logging/Construction (+80)
Federal Government (+10)		Wholesale Trade (+40)
		Retail Trade (+40)
		Private Education/Health Services (+40)
		State Government (+40)
Manufacturing (-50)	Retail Trade (-50)	Local Government (-140)
Mining/Logging (-20)	Local Government (-30)	Leisure/Hospitality (-30)
Wholesale Trade (-10)	Federal Government (-20)	Federal Government (-30)
Transportation/Warehousing/Utilities (-10)	Other Services (-10)	Professional/Business Services (-20)

Unemployment rates remain near historical lows



Want to learn more about the Oregon economy?

Follow us on X at: x.com/OED_Research

Visit our web site at: QualityInfo.org

Visit our subscription service at: qualityinfo.org/subscribe

For more economic or labor market data about Grant, Harney or Malheur counties, contact:

Tony Wendel, Regional Economist/Workforce Analyst

Cell: 541-667-7027

E-mail: Tony.A.Wendel@employ.oregon.gov

Want to be added to the monthly distribution list?

E-mail me at: Tony.A.Wendel@employ.oregon.gov