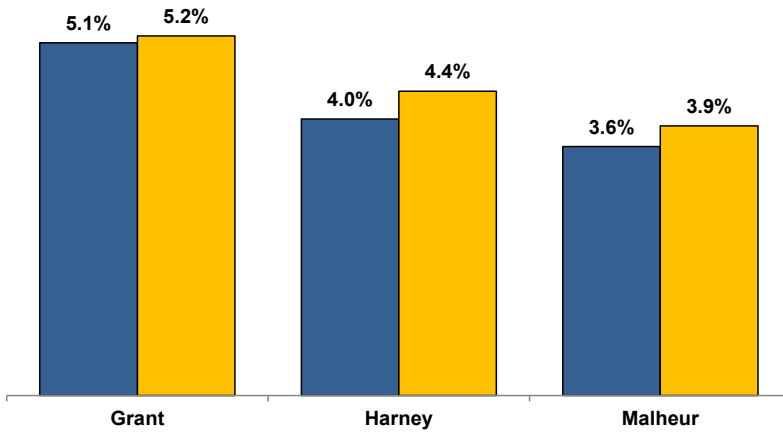


Unemployment Rates (Seasonally Adjusted)

■ July 2023 ■ July 2024



Unemployment Rate News

Malheur County's seasonally adjusted unemployment rate for July 2024 was 3.9%, while Harney County came in at 4.4% and Grant County at 5.2%. Malheur County's rate was below Oregon's statewide rate of 4.1% and the national rate of 4.3%.

Malheur County's rate ranked in a four-way tie for eighth lowest among Oregon's 36 counties for the month while Harney County's tied for 20th and Grant County's ranked 32nd.

All three counties' rates were above their July 2023 rates.

All three counties' July 2024 rates were their second lowest July rates since comparable statistics began in 1990. The only lower July rates for all three counties came in 2023.

Nonfarm Employment Change

July 2023 to July 2024

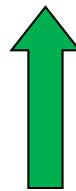
Grant County lost an estimated 110 jobs over the year. The private sector decreased by 100 jobs. Manufacturing led losses. Gains were confined to construction. The public sector dropped 10 jobs with a loss in local government overcoming a gain in federal government while state government went unchanged.

Harney County employment decreased by an estimated 120 jobs over the year. The private sector dropped 50 jobs led by losses in retail trade. Gains were confined to private education and health services. The public sector lost 70 jobs with losses in local government and federal government while state government went unchanged.

Malheur County employment increased by an estimated 150 jobs over the year. The private sector added 110 jobs led by gains in private education and health services and wholesale trade. Leisure and hospitality led losses. The public sector increased by 40 jobs with gains in local government and state government overcoming a loss in federal government.

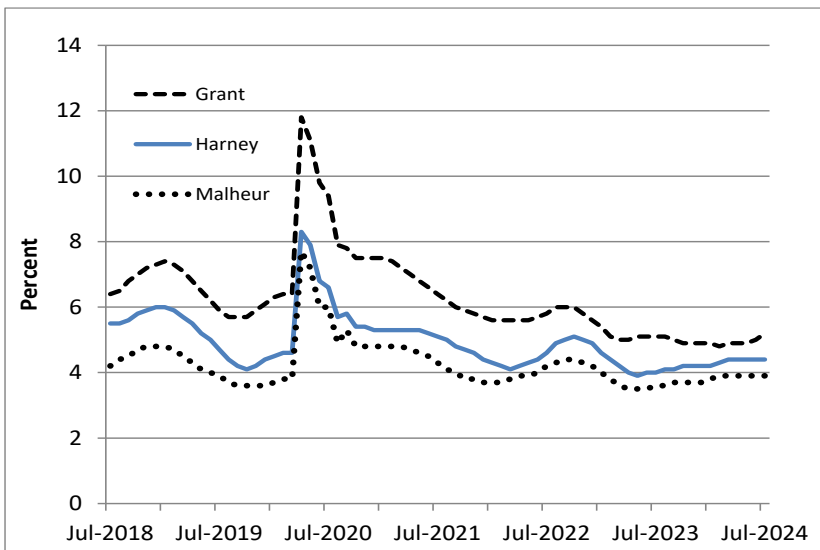
Notable Industry Gains and Losses

Over-the-Year Employment Change from July 2023



Grant	Harney	Malheur
Construction (+20)	Private Education/Health Services (+30)	Private Education/Health Services (+70)
Federal Government (+10)		Wholesale Trade (+40)
		Local Government (+30)
		State Government (+30)
		Mining/Logging/Construction (+20)
Manufacturing (-50)	Local Government (-50)	Leisure/Hospitality (-20)
Retail Trade (-20)	Retail Trade (-40)	Federal Government (-20)
Local Government (-20)	Professional/Business Services (-20)	Other Services (-10)
Wholesale Trade (-10)	Federal Government (-20)	Transportation/Warehousing/Utilities (-10)

Unemployment rates remain near historical lows



Want to learn more about the Oregon economy?

Follow us on Twitter at: [Twitter.com/OED_Research](https://twitter.com/OED_Research)

Visit our web site at: QualityInfo.org

Visit our subscription service at: qualityinfo.org/subscribe

For more economic or labor market data about Grant, Harney or Malheur counties, contact:

Tony Wendel, Regional Economist/Workforce Analyst

Cell: 541-667-7027

E-mail: Tony.A.Wendel@employ.oregon.gov

Want to be added to the monthly distribution list?

E-mail me at: Tony.A.Wendel@employ.oregon.gov