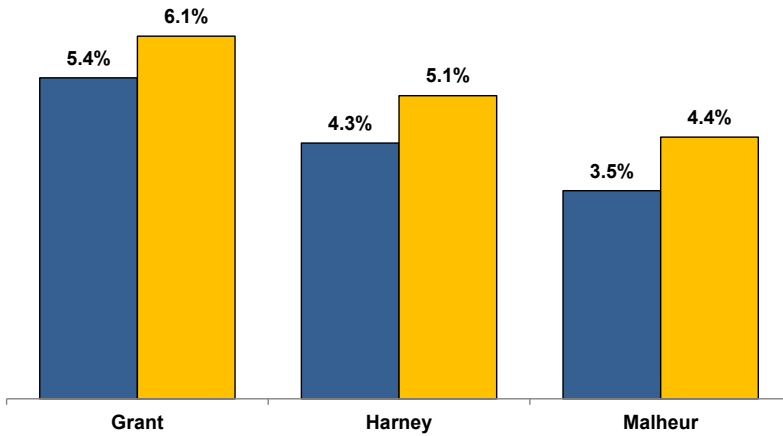


Unemployment Rates (Seasonally Adjusted)

■ March 2022 ■ March 2023



Unemployment Rate News

Malheur County's seasonally adjusted unemployment rate for March 2023 was 4.4%, while Harney County came in at 5.1% and Grant County at 6.1%. Malheur County's rate was the same as Oregon's statewide rate of 4.4% while all three counties' rates were above the national rate of 3.5%.

Malheur County's rate ranked in a four-way tie for 13th lowest among Oregon's 36 counties for the month while Harney County's ranked 24th and Grant County's sat at 35th.

All three counties' rates were above the previous March's rates.

Since comparable statistics began in 1990, Grant County's only lower March rate came in 2022 while Harney County had lower March rates only in 2022 and 2020. Malheur County had lower March rates in 2022, 2020, and 2018.

Nonfarm Employment Change

March 2022 to March 2023

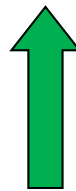
Grant County dropped an estimated 10 jobs over the year. The private sector increased by 10 jobs with small gains overcoming small losses across industries. The public sector lost 20 jobs with losses in federal and local government overcoming a gain in state government.

Harney County lost an estimated 20 jobs over the year. The private sector dropped 60 jobs led by losses in leisure and hospitality and goods-producing. Gains were confined to retail trade. The public sector added 40 jobs with gains in local and federal government while state government was unchanged.

Malheur County employment increased by an estimated 10 jobs over the year. The private sector added 40 jobs with gains led by retail trade and education and health services. Losses were led by leisure and hospitality and wholesale trade. The public sector dropped 30 jobs with losses in federal, state, and local government.

Notable Industry Gains and Losses

Over-the-Year Employment Change from March 2022



Grant

- Construction (+10)
- Information (+10)
- Private Education/Health Services (+10)
- State Government (+10)

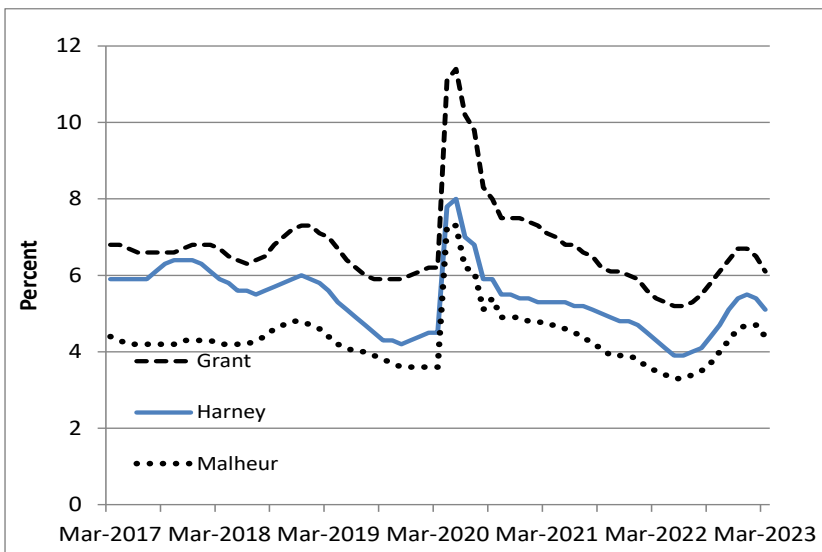
Harney

- Local Government (+30)
- Retail Trade (+10)
- Federal Government (+10)
- Leisure/Hospitality (-30)
- Goods-producing (-20)
- Financial Activities (-10)

Malheur

- Retail Trade (+70)
- Private Education/Health Services (+30)
- Transportation/Warehousing/Utilities (+20)
- Financial Activities (+10)
- Leisure/Hospitality (-40)
- Wholesale Trade (-30)
- Mining/Logging/Construction (-10)
- Manufacturing (-10)

Unemployment rate turns down after brief climb



Want to learn more about the Oregon economy?

Follow us on Twitter at: [Twitter.com/OED_Research](https://twitter.com/OED_Research)

Visit our web site at: QualityInfo.org

Visit our subscription service at: qualityinfo.org/subscribe

For more economic or labor market data about Grant, Harney or Malheur counties, contact:

Tony Wendel, Workforce Analyst

Cell: 541-667-7027

E-mail: Tony.A.Wendel@employ.oregon.gov

Want to be added to the monthly distribution list?

E-mail me at: Tony.A.Wendel@employ.oregon.gov