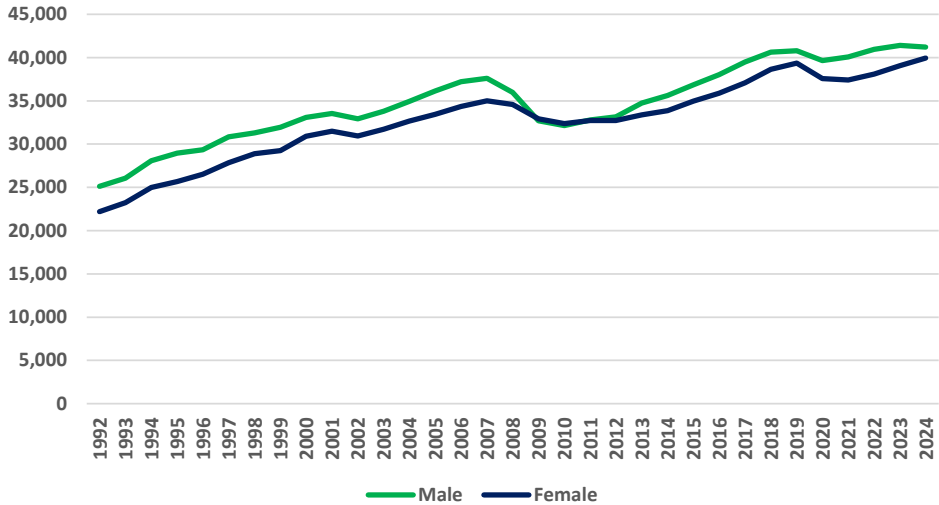


**Special Topic: Workforce Gender Demographics**

**Workforce Gender Demographics**



Source: Oregon Employment Department and U.S. Census Quarterly Workforce Indicators

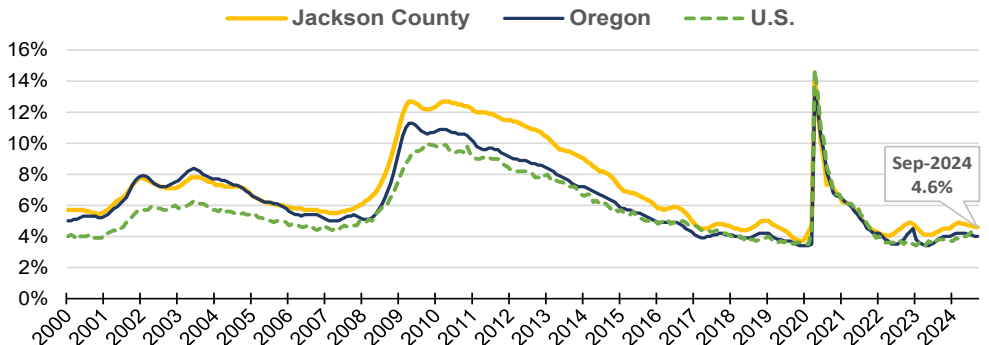
Gender demographics are available from the U.S. Census QWI Explorer for Jackson County beginning in 1992. Female representation in the workforce has ranged from a low of 46% to a high of 50% depending on the year. In 2009 and 2010 women represented approximately 50.2% of the workforce, record highs.

Male representation in the workforce was the highest proportionally in 1992 with 53.1%. After the convergence in 2009-2010 the share of male representation has been greater, though the data indicates the gap has been decreasing the last few years. As of 2024 the male population accounts for 50.8% of the workforce.

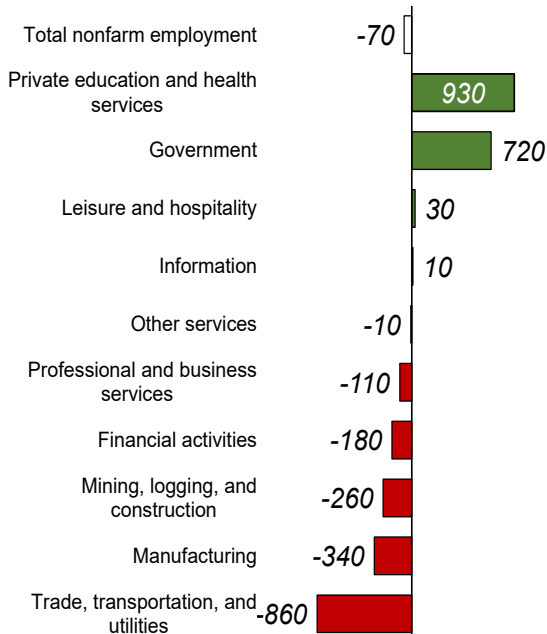
**Unemployment Rate at 4.6%**

- Unemployment rate in September 2023 was 4.4%
- Seasonally adjusted unemployment rate has been relatively stable since early 2024

[More info on unemployment](#)



Source: Oregon Employment Department, LAUS



Source: Oregon Employment Department, CES

**Industry Employment Change: Sep 2023 to Sep 2024**

Jackson County employment lost 70 jobs over the year

- Payroll employment down **0.1%** over the year
- [Detailed September Employment Press Release](#)

**Jeff McAllister — Workforce Analyst for Southern Oregon**

[Jeff.S.McAllister@employ.oregon.gov](mailto:Jeff.S.McAllister@employ.oregon.gov)

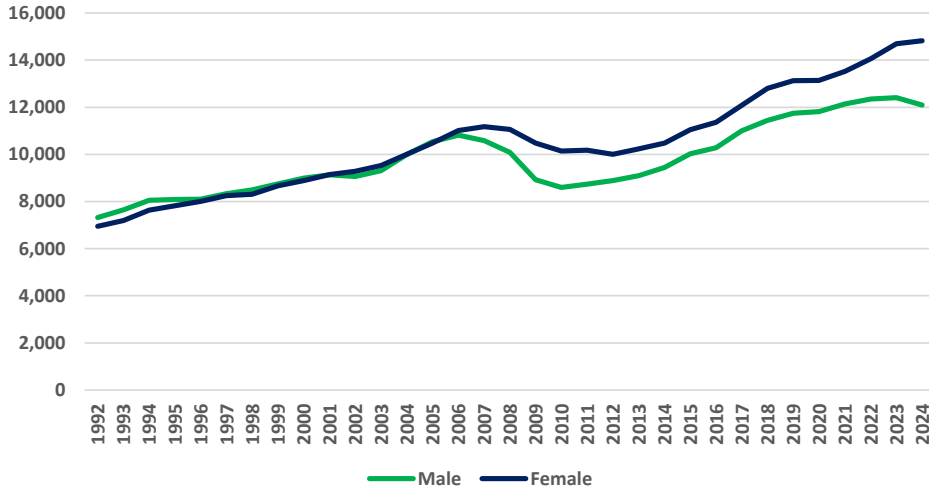
(541) 414 - 5325

**QualityInfo.org:** Your source for the latest economic data, highlights, and analysis.

Discover local new business openings, closures, and hiring events: [Business highlights](#)

**Special Topic: Workforce Gender Demographics**

**Workforce Gender Demographics**



Gender demographics are available from the U.S. Census QWI Explorer for Josephine County beginning in 1992. Female representation in the workforce has ranged from a low of 48% to a high of 55% depending on the year. In 2024 women accounted for approximately 55.1% of the workforce, a record high.

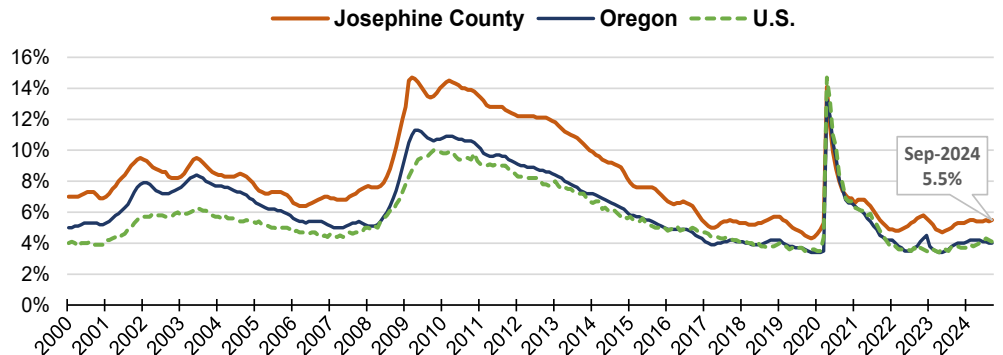
Male representation in the workforce was the highest proportionally in 1993 with 51.5%. From 1996 to 2006 the difference in representation hovered around 0.5-1%. After 2005 women have had greater representation than men. Nearly 1,500 men dropped out of the labor force in the 2008-2010 period. As of 2024 there are approximately 3,000 less men than women in the workforce.

Source: Oregon Employment Department and U.S. Census Quarterly Workforce Indicators

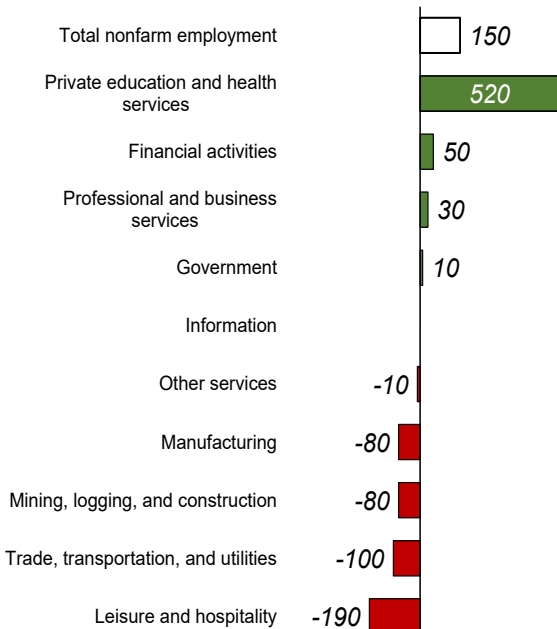
**Unemployment Rate at 5.5%**

- Unemployment rate in September 2023 was 5.2%
- Seasonally adjusted unemployment rate has been relatively stable since early 2024

[More info on unemployment](#)



Source: Oregon Employment Department, LAUS



Source: Oregon Employment Department, CES

**Industry Employment Change: Sep 2023 to Sep 2024**  
Josephine County employment added 150 jobs over the year

- Payroll employment up **0.5%** over the year
- [Detailed September Employment Press Release](#)

**Jeff McAllister — Workforce Analyst for Southern Oregon**  
[Jeff.S.McAllister@employ.oregon.gov](mailto:Jeff.S.McAllister@employ.oregon.gov)  
 (541) 414 - 5325

[QualityInfo.org](#): Your source for the latest economic data, highlights, and analysis.

Discover local new business openings, closures, and hiring events: [Business highlights](#)