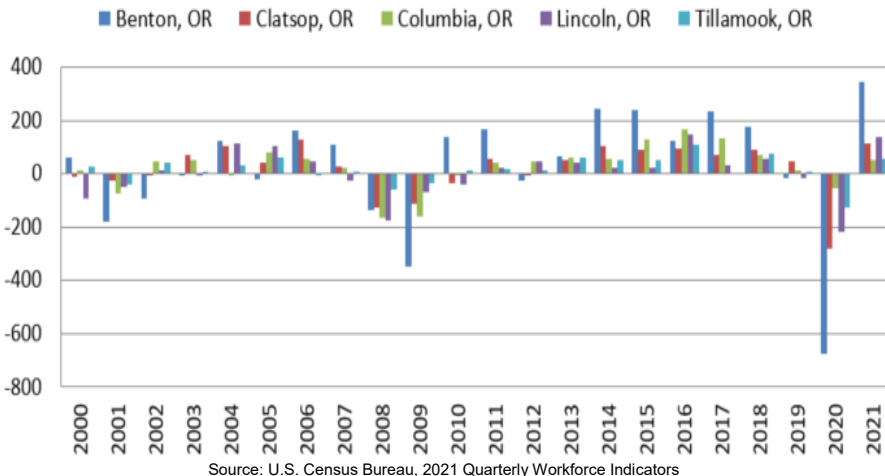


Northwest Oregon Economic Indicators

For Benton, Clatsop, Columbia, Lincoln & Tillamook Counties November 2022

Net Private Job Change in NW Oregon



Graph of the Month

Above is the net change in private jobs in NW Oregon over the last 21 years. Net change shows the difference between job gains and losses and is useful to track year over year employment change in an economy. The dot com, great recession, and pandemic recession are indicated by the years in which jobs decreased. You can see how the net positive job increases were larger in 2021 than in the years immediately following the other recessions. This helps visualize how strong the return to employment has been after the pandemic recession and serves as another example of how unique the current labor situation is.

Key Takeaways

Unemployment rates increased in 35 of Oregon's 36 counties and in every county in NW Oregon, though all but one NW county remains lower than in October 2021.

Local education continues to add jobs over the year in every county. Leisure and hospitality also remains as a leading industry in job growth. Interestingly, much of the job growth is centered in accommodation rather than food services.

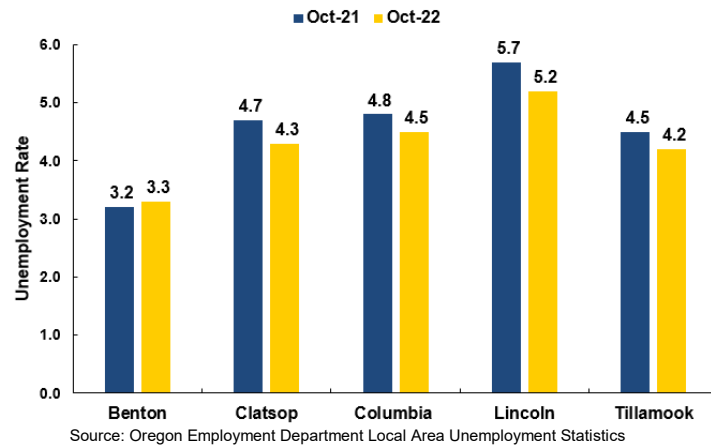
For more economic or labor market data or to be added to this monthly email list, contact:

Shaun Barrick, Workforce Analyst/Economist
Cell: 503.396.7355
E-mail: Shaun.barrick@employ.oregon.gov

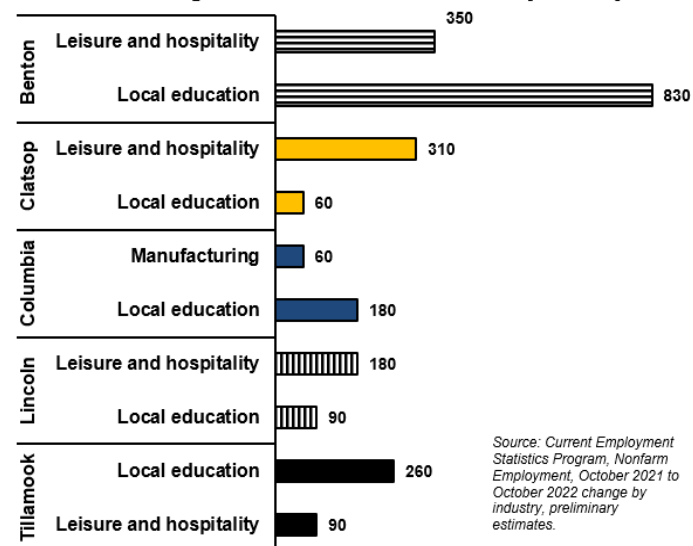
Want to keep up on the latest Oregon economic data?

Visit our web site at www.QualityInfo.org
Follow us on Twitter at: [@OED_Research](https://twitter.com/OED_Research)

Local Area Unemployment Rates (Preliminary Estimates, Seasonally Adjusted)



Industries Adding the Most Jobs in Past Year by County



Industries Losing the Most Jobs in Past Year by County

