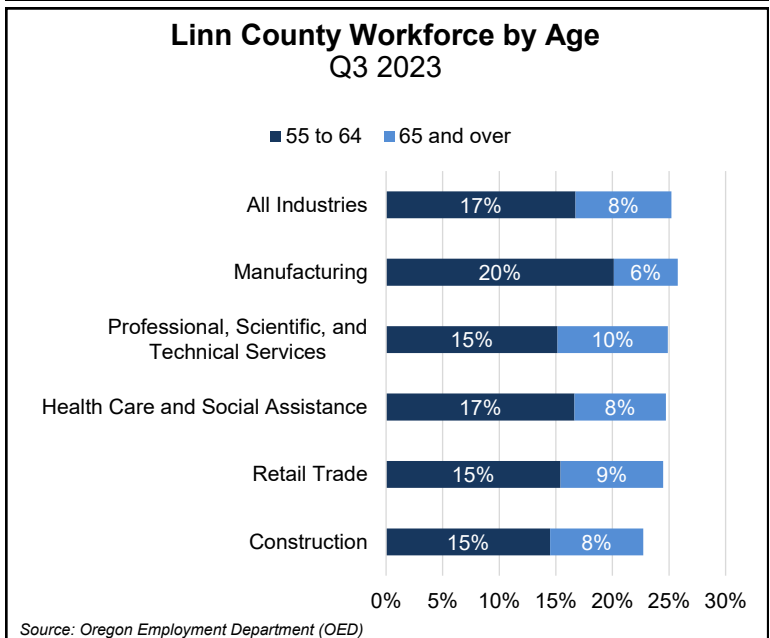
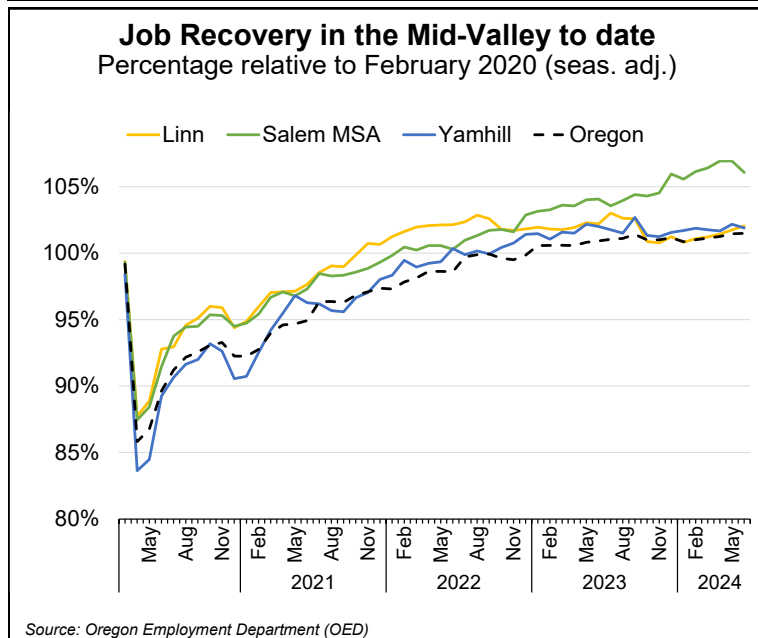
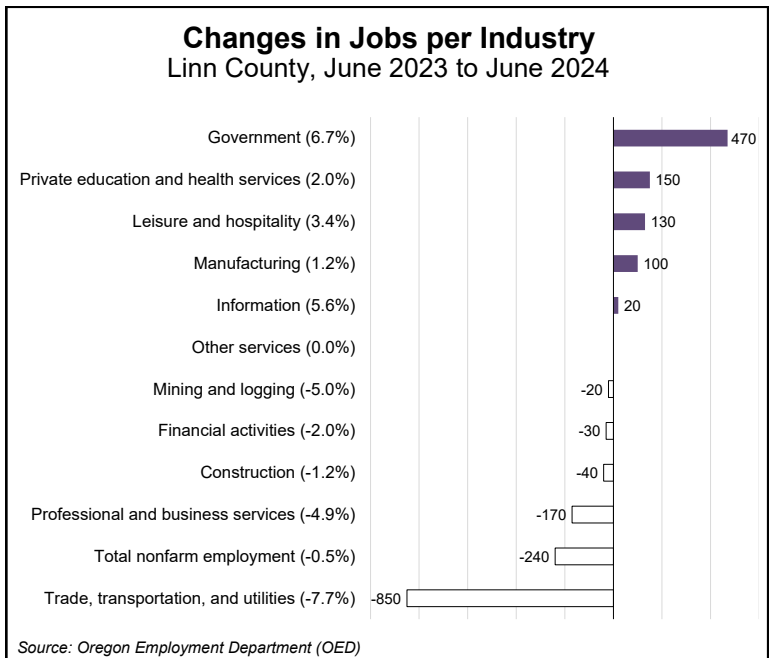
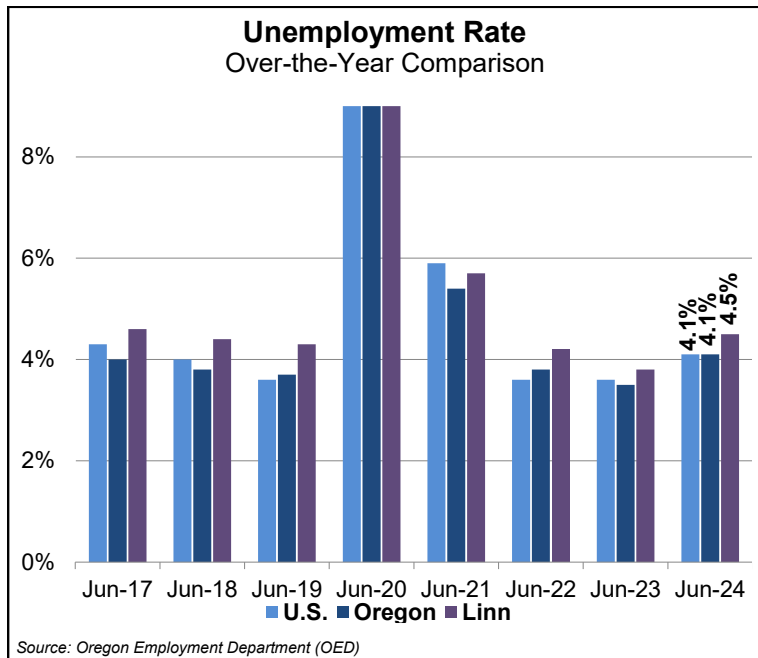


Mid-Valley Economic Indicators— Linn County, June Data

Linn County's seasonally adjusted unemployment rate was 4.5% in June, edging down from May's revised rate of 4.6%. Oregon's statewide unemployment rate in June was 4.1%, down slightly from a revised May rate of 4.2%. Over the month, employment grew by a seasonally adjusted 140 jobs. Linn County now has 960 more jobs (+2.1%) than in February of 2020, which slightly exceeds the state's growth rate of 1.5% since that time.

In the last year to June 2024, total nonfarm employment decreased by 0.5%, or 240 jobs. Growth was led by government, with health care, leisure, and manufacturing also adding jobs. The trade, transportation, and utilities industry had the greatest employment losses (-850 jobs), followed by the professional and business services industry (-170 jobs).

LINN COUNTY WORKFORCE BY AGE—A [new report](#) out from the Oregon Employment Department examines the labor force impacts of an aging population with lower levels of in-migration. As in the state and nation, Linn County's workforce has many more workers that are 55 and older than several decades ago. Statewide, about 24% of workers are older than 55, with 8% older than 65. Slight variation exists by industry, although Linn County's older workforce is distributed fairly evenly across major industries.



For more information and/or to be added to the monthly e-mail distribution list, contact:

Henry Fields, Workforce Analyst, Oregon Employment Dept.
henry.l.fields@employ.oregon.gov | Tel.: (541) 359-9178

Join the conversation and stay informed.
Qualityinfo.org/mid-valley

Contact us for online presentations and speaking engagements.

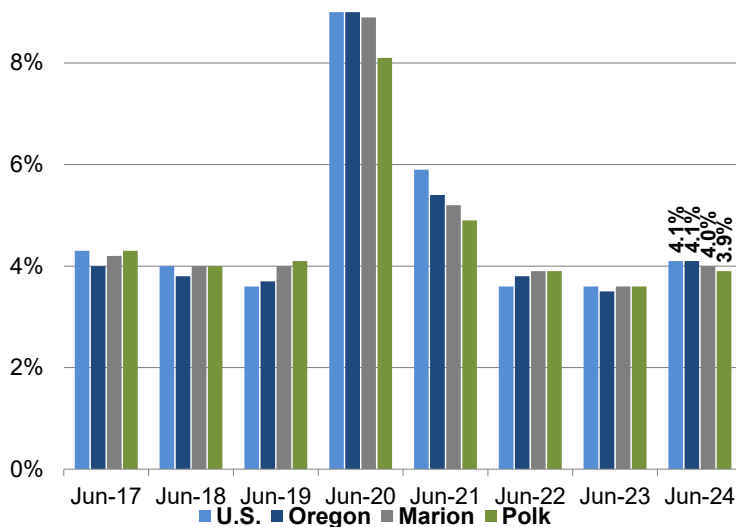
Mid-Valley Economic Indicators— Salem MSA, June Data

The Salem MSA's seasonally adjusted unemployment rate was 4.0% in June, edging down from its revised rate of 4.1% in May. Oregon's statewide unemployment rate in June was 4.1%, with a similar decline relative to a revised 4.2% in May. Seasonally adjusted employment declined by 1,500 over the month, although employment gains above the February 2020 pre-pandemic employment level remain robust, at 6.1%, or 10,600 jobs.

Year-over-year, total nonfarm employment is up 1.4%, or 2,500 jobs. Job growth was led by professional and business services (+2,000 jobs), government (+900 jobs), and private education and health care (+800 jobs). Manufacturing saw the largest employment losses (-500 jobs), along with trade, transportation and utilities (-400 jobs) and construction (-300 jobs).

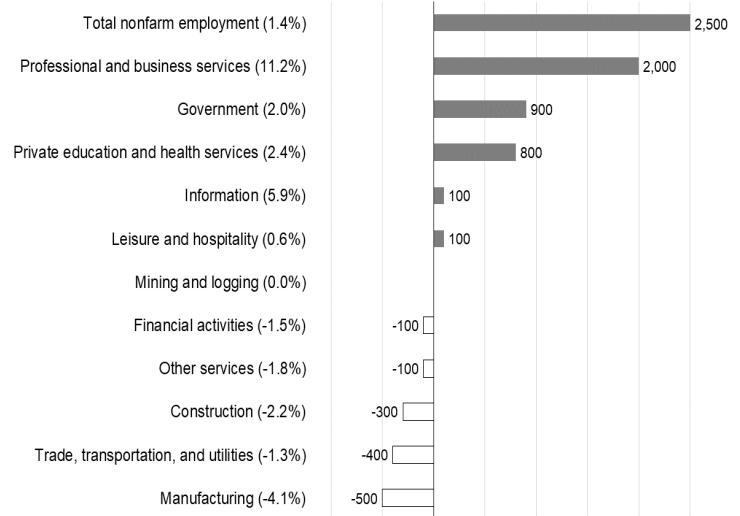
SALEM MSA WORKFORCE BY AGE—A [new report](#) out from the Oregon Employment Department examines the labor force impacts of an aging population with lower levels of in-migration. As in the state and nation, the area's workforce has many more workers that are 55 and older than several decades ago. Statewide, about 24% of workers are older than 55, with 8% older than 65. About the same proportion of workers are 65 and older across many of Salem's industries (9%) but variation in the workers aged 55-64 is notable. Manufacturing in particular has a higher proportion of workers in this category than the state average.

**Unemployment Rate
Over-the-Year Comparison**



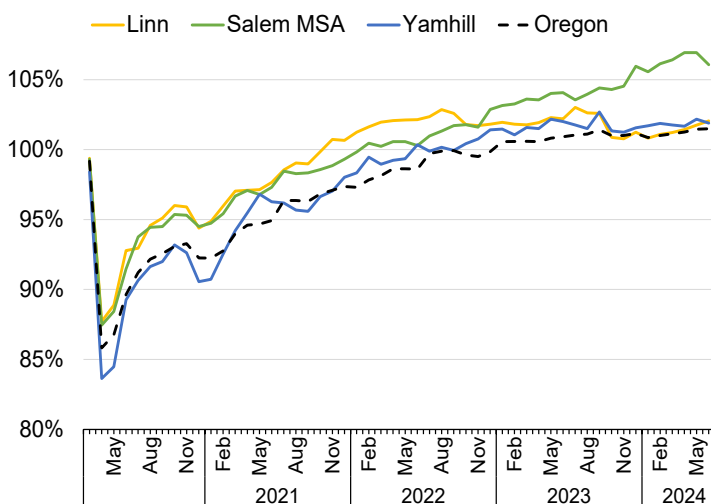
Source: Oregon Employment Department (OED)

**Changes in Jobs per Industry
Salem MSA, June 2023 to June 2024**



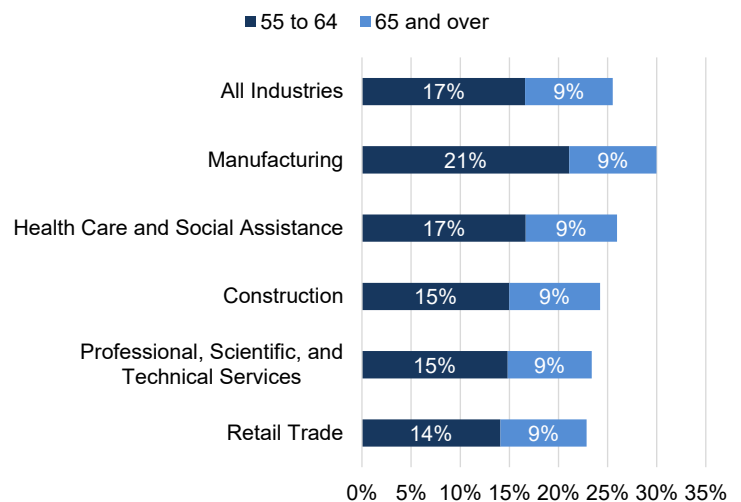
Source: Oregon Employment Department (OED)

**Job Recovery in the Mid-Valley to date
Percentage relative to February 2020 (seas. adj.)**



Source: Oregon Employment Department (OED)

**Salem Metro Area Workforce by Age
Q3 2023**



Source: Oregon Employment Department (OED), U.S. Census Bureau Quarterly Workforce Indicators

For more information and/or to be added to the monthly e-mail distribution list, contact:

Henry Fields, Workforce Analyst, Oregon Employment Dept.
henry.l.fields@employ.oregon.gov | Tel.: (541) 359-9178

Join the conversation and stay informed.

[Qualityinfo.org/mid-valley](https://www.qualityinfo.org/mid-valley)

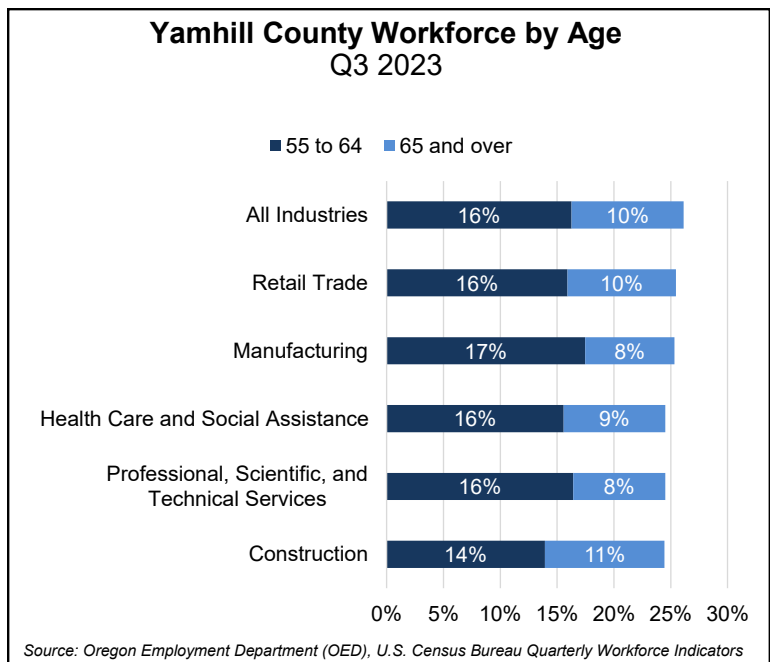
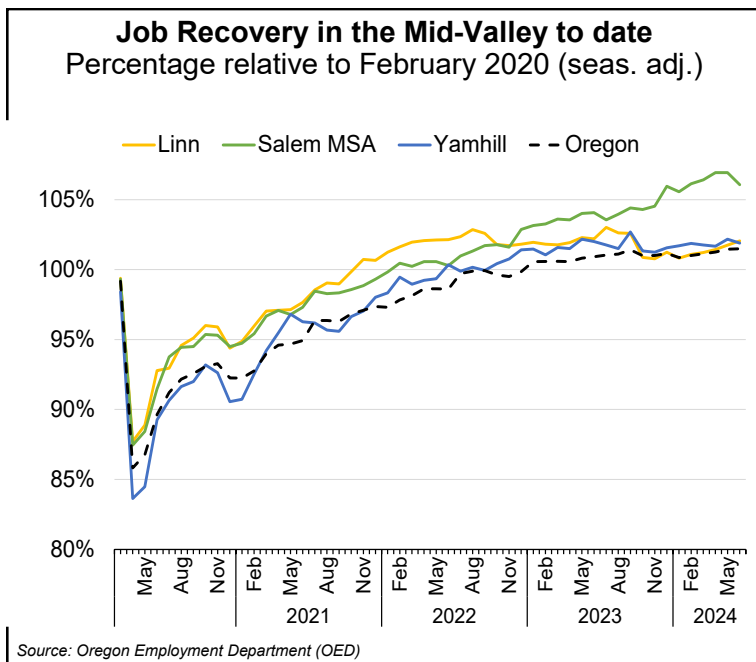
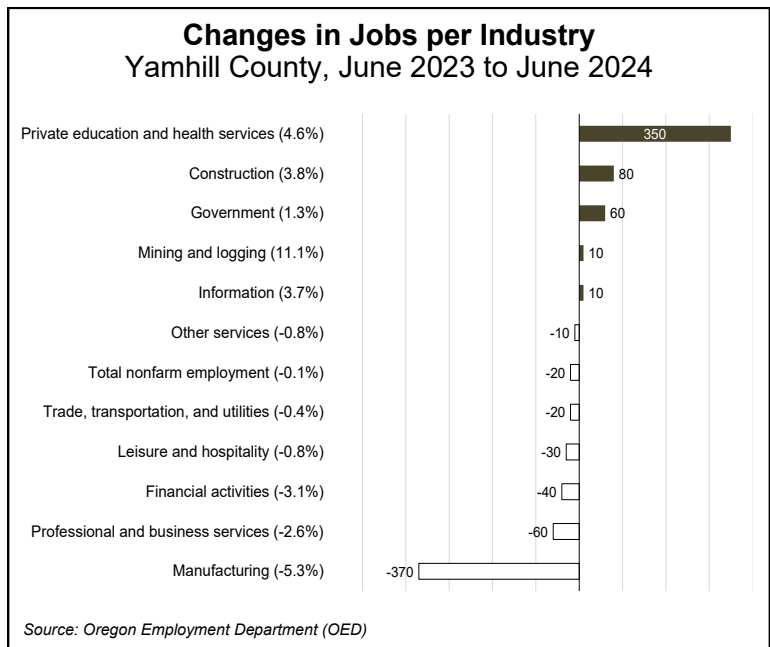
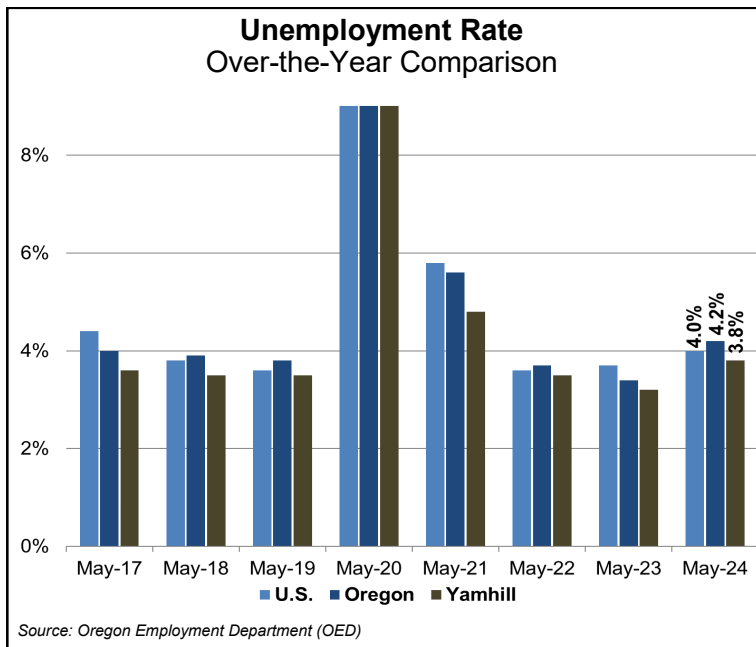
Contact us for online presentations and speaking engagements.

Mid-Valley Economic Indicators— Yamhill County, June Data

Yamhill County's seasonally adjusted unemployment rate was 3.7% in June, edging down from its revised rate of 3.8% in May. Oregon's statewide unemployment rate in June was 4.1%, down from its revised May rate of 4.2%. The county's seasonally adjusted employment decreased by 100 jobs over the month, and employment is now 670 jobs, or 1.9%, above the pre-pandemic employment level of February 2020.

Year-over-year, total nonfarm employment was essentially unchanged, declining by 20 jobs (-0.1%). Gains in private education and health services (+350 jobs), construction (+80 jobs) and government (+60 jobs) were offset by losses in manufacturing (-370 jobs) professional and business services (-60 jobs) and financial activities (-40 jobs).

YAMHILL COUNTY WORKFORCE BY AGE—A [new report](#) out from the Oregon Employment Department examines the labor force impacts of an aging population with lower levels of in-migration. As in the state and nation, Yamhill County's workforce has many more workers that are 55 and older than several decades ago. Statewide, about 24% of workers are older than 55, with 8% older than 65. Yamhill County's workforce has a slightly higher proportion of older workers, without a great degree of variability among industries. Interestingly, retail trade, an industry that is typically a little younger than average, is one of the older industries in Yamhill County.



For more information and/or to be added to the monthly e-mail distribution list, contact:

Henry Fields, Workforce Analyst, Oregon Employment Dept.
henry.f.fields@employ.oregon.gov | Tel.: (541) 359-9178

Join the conversation and stay informed.

Qualityinfo.org/mid-valley

Contact us for online presentations and speaking engagements.