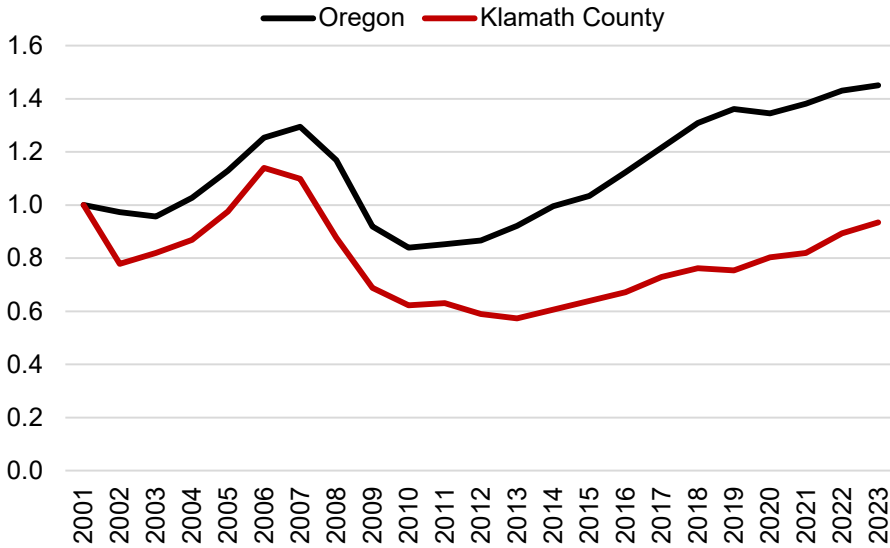


**Special Topic: Construction Employment in South Central Oregon**

**Construction Employment Index**

Annual Average, 2001 = 1



Construction has typically been one of the industries that is most sensitive to recession job loss, although 2020 was largely an exception. The special chart this month looks at indexed job growth in Oregon and Klamath County with 2001 as its baseline.

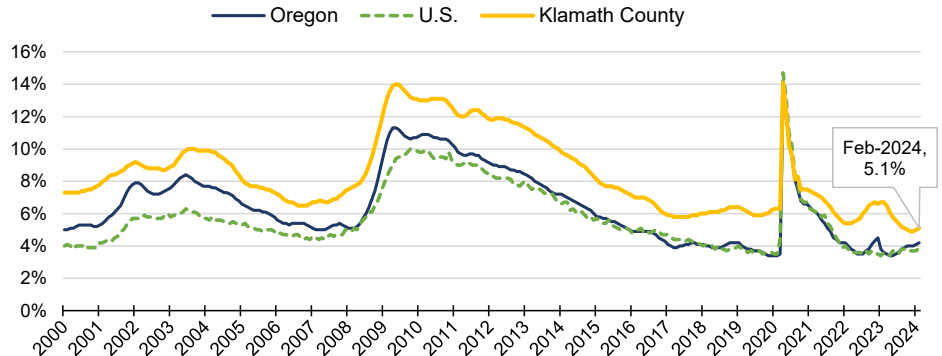
In addition to steep losses in the 2008 era Great Recession, which devastated construction jobs nationwide, Klamath County also lost construction jobs during the smaller 2001 recession. There was relatively little construction job loss in 2020, as was the case statewide.

Because of several rounds of job losses and relatively slow growth in the 2010s, Klamath has less employment in construction than it did in 2001, and unlike the state hasn't exceeded the mid-2000s peak. Recent growth is encouraging, but construction jobs were still 7% below 2001 as of 2023.

Source: Oregon Employment Department, Current Employment Statistics

**Unemployment Rate at 5.1%**

- Unemployment rate in February 2023 was 6.7%
- Unemployment rate little changed over-the-month

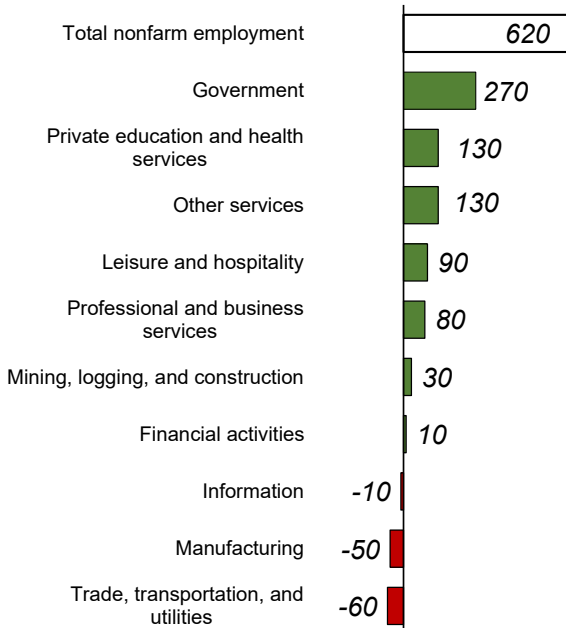


Source: Oregon Employment Department, LAUS

**Industry Employment Change: Feb. 2023 to Feb. 2024**

*Klamath County adds 620 jobs over the year*

- Employment up **2.7%** in the past year
- [Detailed February Employment Press Release](#)



Source: Oregon Employment Department, CES

**Henry Fields—Workforce Analyst for Southern Oregon**

[Henry.L.Fields@employ.oregon.gov](mailto:Henry.L.Fields@employ.oregon.gov)

(541) 359 - 9178

[QualityInfo.org](http://QualityInfo.org): Your source for the latest economic data, highlights, and analysis.

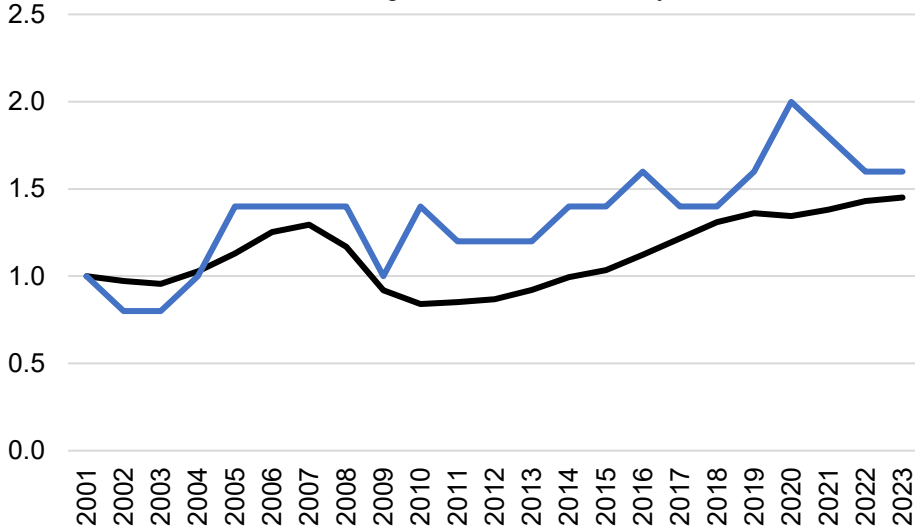
Discover everything related to South Central Oregon and Klamath County's labor market: [South Central Oregon](#)

**Special Topic: Construction Employment in South Central Oregon**

**Construction Employment Index**

Annual Average, 2001 = 1

— Oregon — Lake County



Construction has typically been one of the industries that is most sensitive to recession job loss, although 2020 was largely an exception. The special chart this month looks at indexed job growth in Oregon and Lake County with 2001 as its baseline.

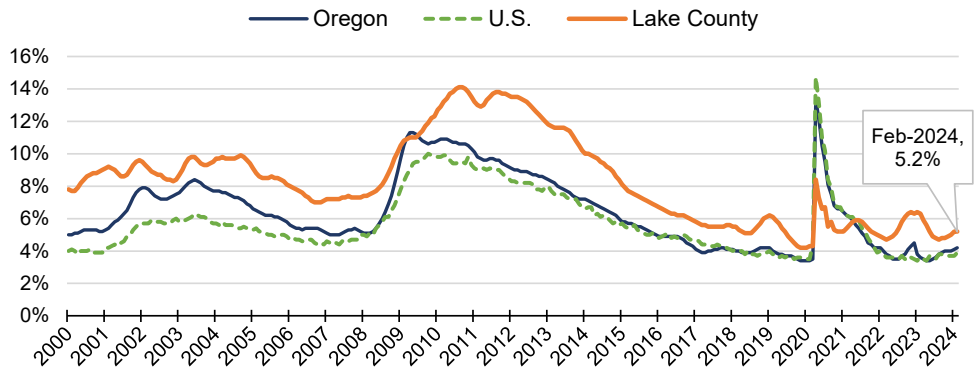
Because Lake County construction is a small industry (ranging from 50 to 100 jobs), the changes from year to year are a bit choppy than at the state level. That said, as in the state, Lake County has more construction jobs than in 2001, and fully recovered jobs lost during the 2008 recession.

The 2020 recession may have had a bigger impact on local construction employment than statewide. In 2022 and 2023 there were fewer jobs than the recent peak in 2020. The state added construction jobs during that time, by contrast.

Source: Oregon Employment Department, Current Employment Statistics

**Unemployment Rate at 5.2%**

- Unemployment rate was 6.3% in February 2023
- Unemployment rate remained little changed since Spring of 2023

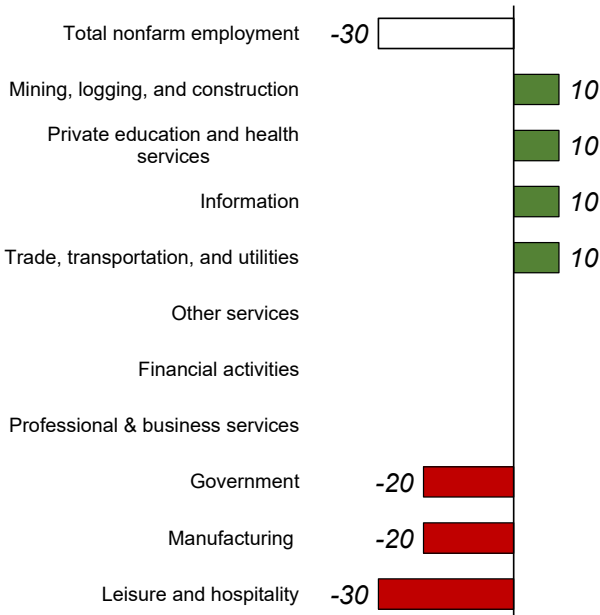


Source: Oregon Employment Department, LAUS

**Industry Employment Change: Feb. 2023 to Feb. 2024**

Lake County employment declines 30 jobs over-the-year

[Detailed February Employment Press Release](#)



Source: Oregon Employment Department, CES

**Henry Fields—Workforce Analyst for Southern Oregon**

[Henry.L.Fields@employ.oregon.gov](mailto:Henry.L.Fields@employ.oregon.gov)

(541) 359 - 9178

[QualityInfo.org](#): Your source for the latest economic data, highlights, and analysis.

Discover everything related to South Central Oregon and Lake County's labor market: [South Central Oregon](#)