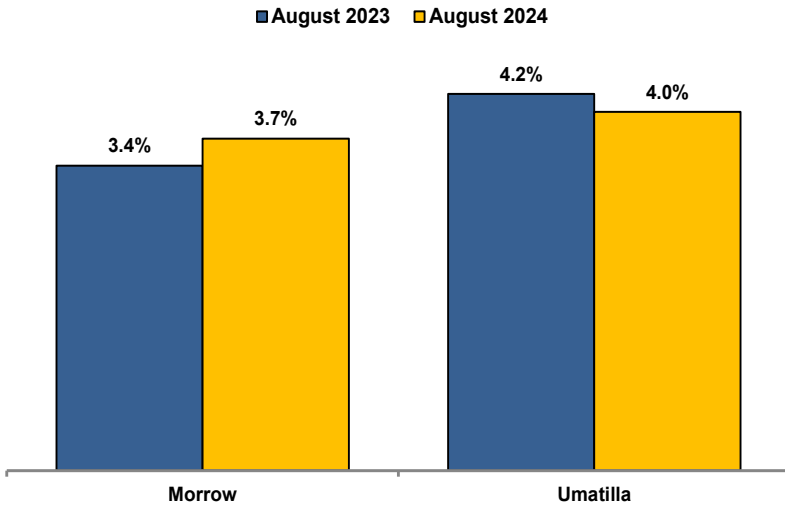


Unemployment Rates (Seasonally Adjusted)



Unemployment Rate News

Morrow County's seasonally adjusted unemployment rate for August 2024 was 3.7%, while Umatilla County came in at 4.0%. Both counties' rates were below or equal to Oregon's statewide rate of 4.0% and below the national rate of 4.2%.

Morrow County's rate ranked in a four-way tie for sixth lowest among Oregon's 36 counties for the month while Umatilla County's ranked in a five-way tie for 13th.

Umatilla County's rate was below its August 2023 rate while Morrow County's was up over the year.

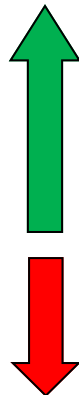
Umatilla County's August 2024 rate was its lowest August rate since comparable statistics began in 1990. Morrow County's was its second lowest August rate behind only August 2023. Over the same period, Umatilla County's rate tied for its second lowest rate for any month.

Nonfarm Employment Change
August 2023 to August 2024

Morrow County lost an estimated 10 jobs over the year. The private sector increased by 190 jobs. Construction saw the largest gains followed by manufacturing and private education and health services. Losses were confined to leisure and hospitality. The public sector dropped 200 jobs with losses in local government and federal government while state government went unchanged.

Umatilla County employment decreased by an estimated 230 jobs over the year. The private sector decreased by 370 jobs. Gains were led by private education and health services; mining, logging, and construction; and manufacturing. Professional and business services and retail trade led losses. The public sector added 140 jobs with gains in local education, federal government, and state government overwhelming a loss in Indian tribal.

Notable Industry Gains and Losses
Over-the-Year Employment Change from August 2023



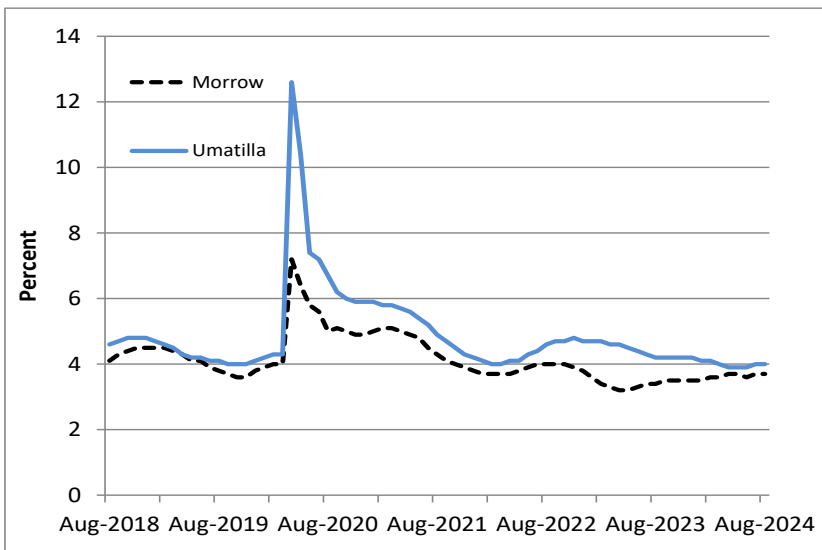
Morrow

- Construction (+80)
- Manufacturing (+40)
- Private Education/Health Services (+40)
- Professional/Business Services (+20)
- Local Government (-190)
- Leisure/Hospitality (-20)
- Federal Government (-10)

Umatilla

- Private Education/Health Services (+180)
- Local Education (+120)
- Mining/Logging/Construction (+80)
- Manufacturing (+70)
- Information (+30)
- Other Services (+30)
- Professional/Business Services (-650)
- Retail Trade (-100)
- Leisure/Hospitality (-30)
- Indian Tribal (-30)
- Financial Activities (-20)

Unemployment rates remain near historical lows



Want to learn more about the Oregon economy?

Follow us on X at: x.com/OED_Research

Visit our web site at: QualityInfo.org

Visit our subscription service at: qualityinfo.org/subscribe

For more economic or labor market data about Morrow or Umatilla counties, contact:

Tony Wendel, Workforce Economist

Cell: 541-667-7027

E-mail: Tony.A.Wendel@employ.oregon.gov

Want to be added to the monthly distribution list?

E-mail me at: Tony.A.Wendel@employ.oregon.gov