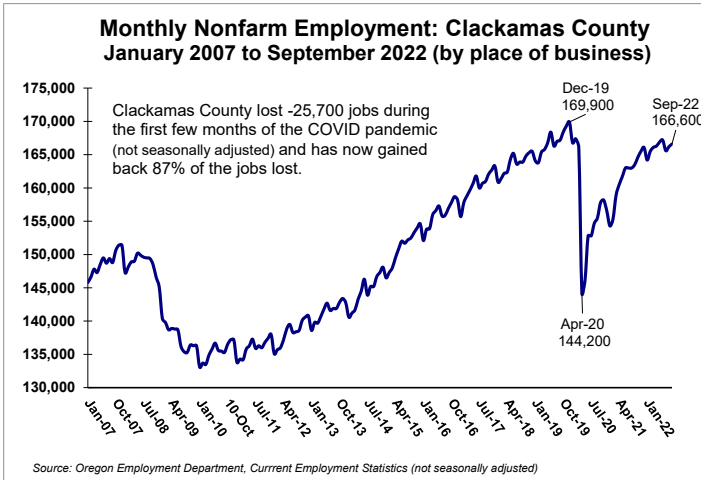
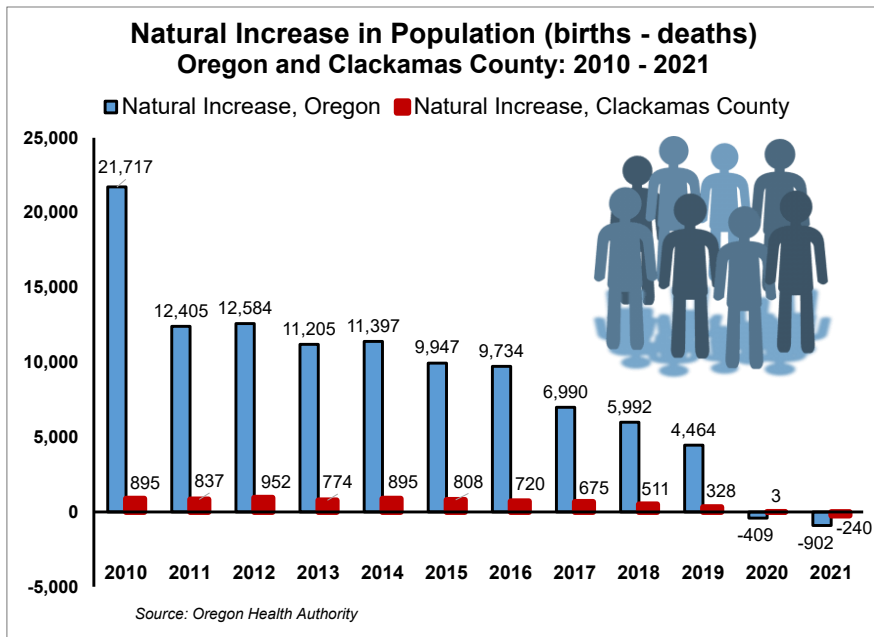
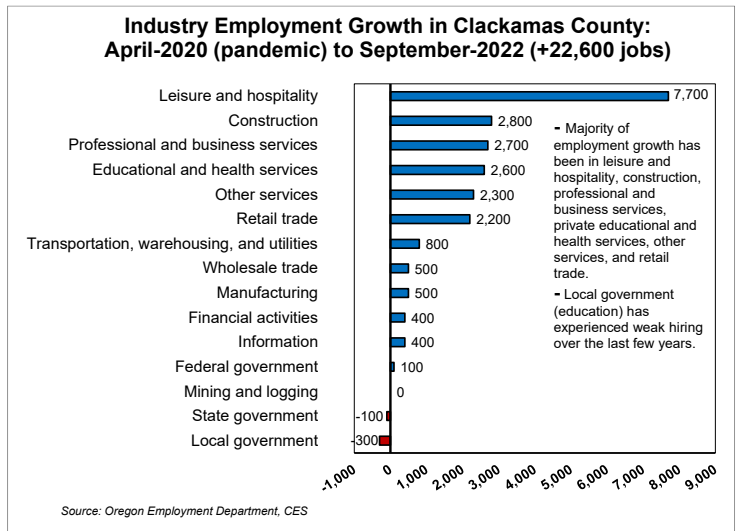
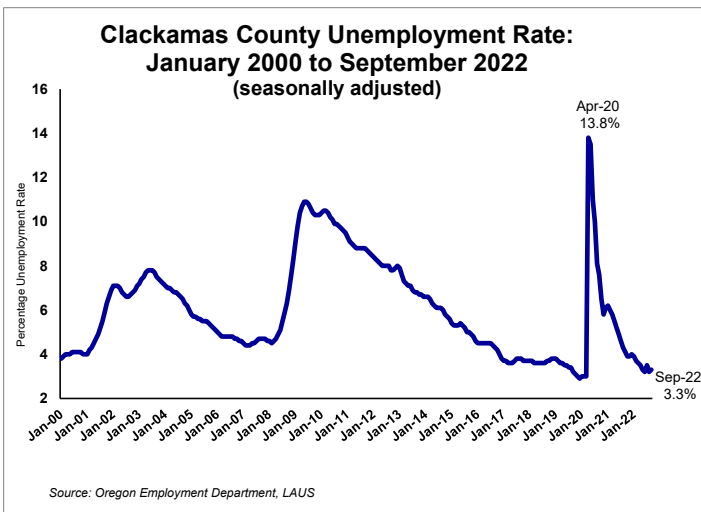


# Clackamas County ECONOMIC INDICATORS

October 2022 (September data)



- Total nonfarm employment reached 166,600 in September which was 400 more jobs than the previous month and 2,800 more than a year ago.
- September's seasonally adjusted unemployment rate increased to 3.3% from 3.2% the previous month with 7,658 unemployed residents.
- Since the recession, the county has added back 22,600 jobs with majority of growth in leisure and hospitality, construction, professional and business services, private education and health services, other services, and retail trade.



### Natural increase in population growth dramatically declined during last two years.

- Oregon's natural increase in population turned negative during both 2020 and 2021 when *births minus deaths* were -409 and -902, respectively. From 2000-2010, Oregon's average annual natural increase in population had been 16,480.
- Clackamas County's natural increase in population was at three in 2020 and fell to -240 in 2021. From 2000-2010, the county's annual natural increase in population was 1,228 and the year-to-year natural increase in population has fallen in most recent years since then.