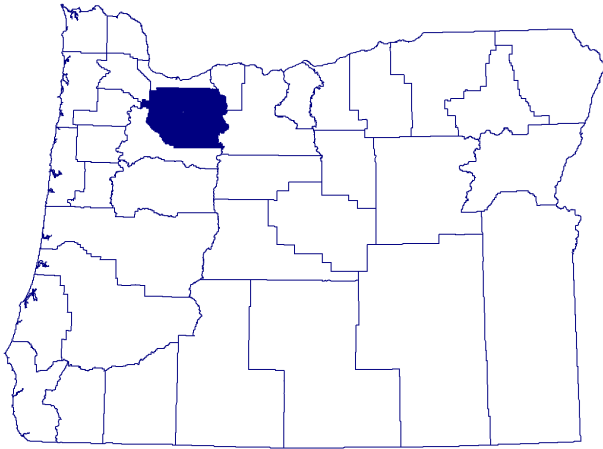


# Clackamas County Quick Facts

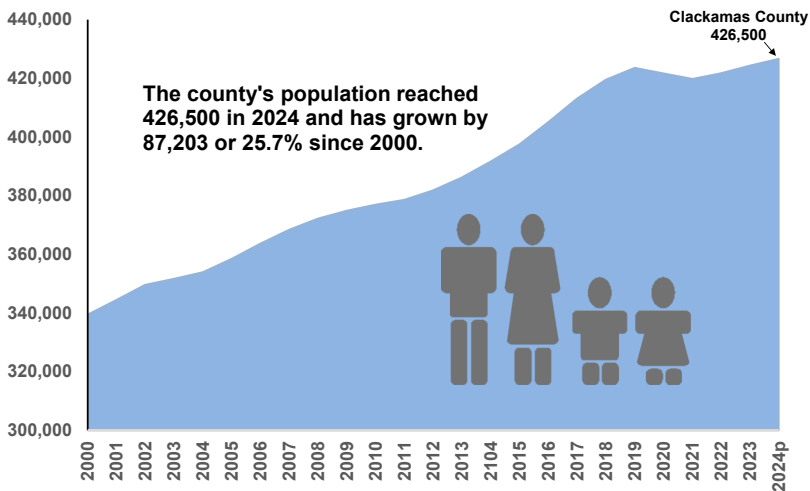
Updated 06/13/25



## Clackamas County — Just the Numbers:

Land Area:	1,879 sq. miles
City, County & State Roads:	2,428 miles
Persons per sq. mile:	227
% of National Forest:	52%
2024 Population:	426,500
Civilian Labor Force:	227,708 Apr/25
Employed Labor Force:	217,907 Apr/25
Unemployment Rate:	4.3% Apr/25
2024 Average Wage:	\$69,941
Per Capita Income (2023):	\$51,666

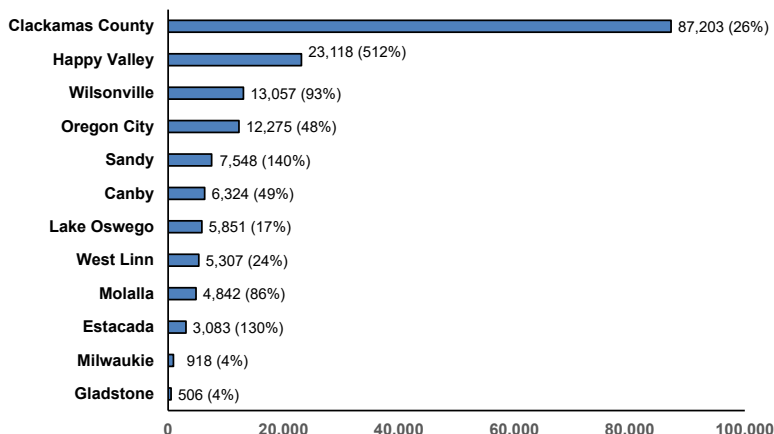
## Clackamas County Population: 2000-2024p



## Population

- Clackamas County's population reached 426,500 in 2024 and has grown by 25.7% since 2000, adding 87,203 residents.
- By 2044, the county's population is projected to reach 493,560 with 19% of its population (0-19 years), 22% (20-39 years), 28% (40-59 years), 22% (60-79 years), and 8% (80+ years).
- Since 2000, the cities that added the most population included Happy Valley (23,118), Wilsonville (13,057), and Oregon City (12,275). The cities with the highest population growth rates included Happy Valley (512%), (Sandy (140%), Estacada (130%), Wilsonville (93%), and Molalla (86%).

## Population Growth: 2000-2024p Clackamas County and Incorporated Cities



## City Population Estimates - 2024p

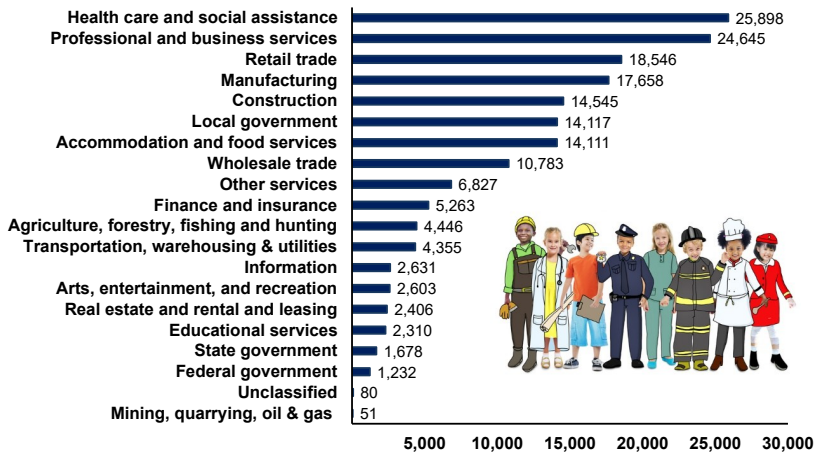
Canby	19,114
Estacada	5,454
Gladstone	11,944
Happy Valley	27,637
Johnson City	515
Lake Oswego*	41,129
Milwaukie	21,408
Molalla	10,489
Oregon City	38,029
Rivergrove*	557
Sandy	12,933
West Linn	27,568
Wilsonville*	27,048

Source: Population Research Center, PSU, 2024p estimates

\* City is located and has population in more than one county.

# Industry and Labor Force

## Average Broad Industry Covered Employment, Clackamas County: 2024 Average Annual Employment: 174,186



Source: Oregon Employment Department, QCEW, 2024

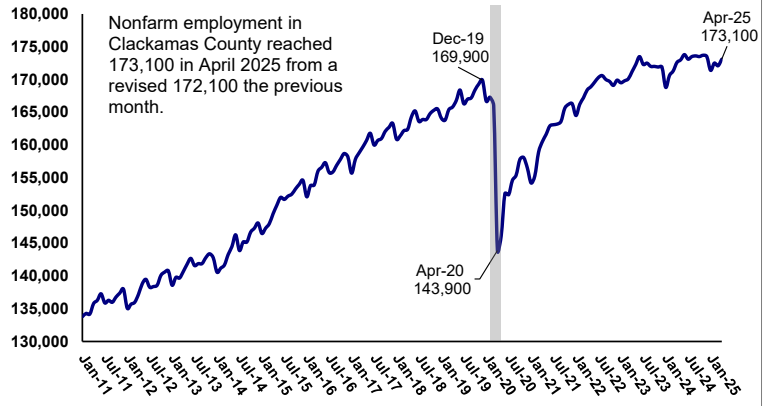
## Industry Employment

- The total average covered employment in Clackamas County was 174,186 in 2024. This was an increase of 948 jobs since 2023.
- Four, broad industries made up one-half of total employment in 2024 and these industries included health care & social assistance (25,898); professional and business services (24,645); retail trade (18,546); and manufacturing (17,658).

## Monthly Employment Statistics

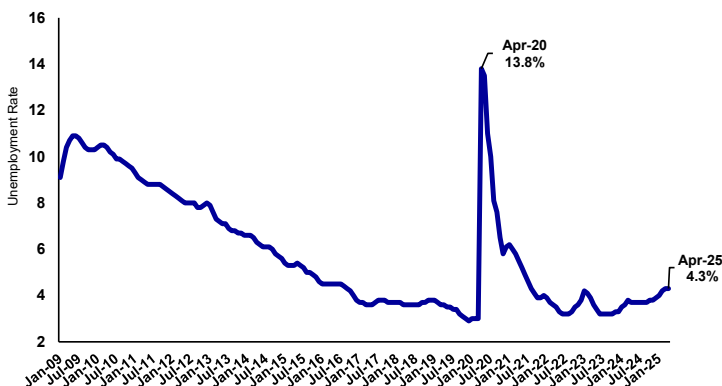
- During the start of the pandemic, total nonfarm employment in Clackamas County fell from 167,400 in February 2020 to 143,900 in April 2020 with a loss of -23,400 jobs. Since April 2025, the county has added back 28,500 or 125% of the jobs lost during the recession.
- The *seasonally adjusted* unemployment rate in Clackamas County was at 4.3% in April 2025 and has fallen by 9.5 percentage points since the highest unemployment rate in April 2020 at 13.8%.
- Most incorporated cities within Clackamas County have experienced job growth at above 20% since the COVID pandemic. The cities adding the most jobs were Happy Valley (5,004); Oregon City (3,886) and Wilsonville (3,129). The cities with the highest rate of job growth were Estacada (70%) and Happy Valley (52%).

## Monthly Nonfarm Employment: Clackamas County January 2011 to April 2025 (by place of business)



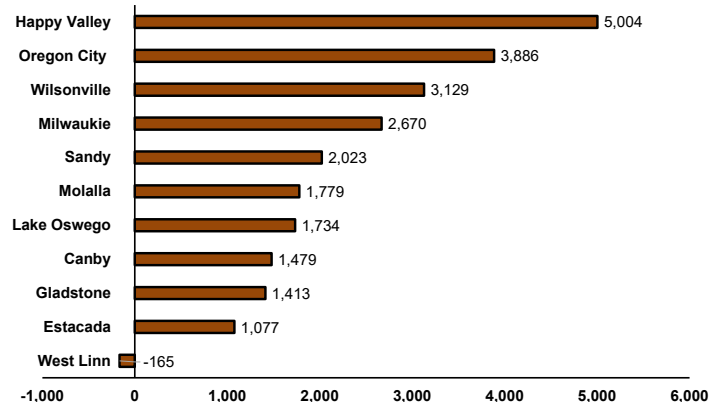
Source: Oregon Employment Department, Current Employment Statistics (not seasonally adjusted)

## Clackamas County Unemployment Rate January 2009 to April 2025 (seasonally adjusted)



Source: Oregon Employment Department, LAUS

## Growth in Resident Employment Incorporated Cities in Clackamas County April 2020 to April 2025

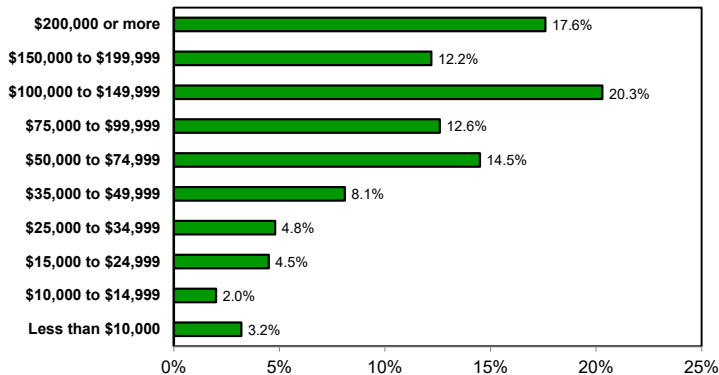


Source: Oregon Employment Department, LAUS

# Household Income and Educational Attainment

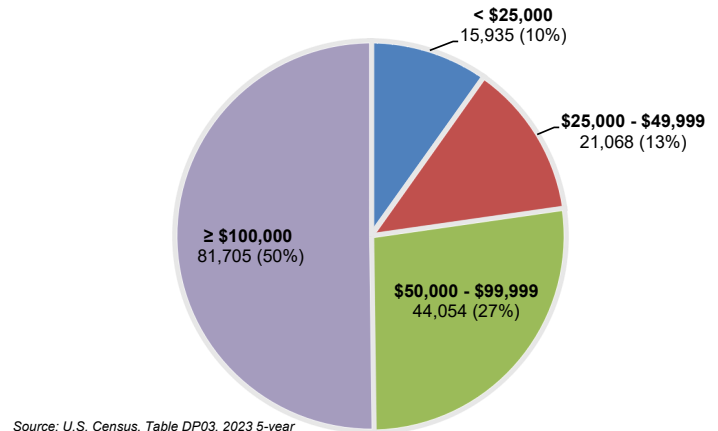
- During 2023, the median household income in Clackamas County was \$100,360 compared with \$97,419 a year ago.
- One-half of households had incomes  $\geq$  \$100,000 whereas one-tenth of households had incomes  $<$  \$25,000.

**Household Income  
Clackamas County, 2023**  
(Median Household Income: \$100,360)



Source: Census, ACS, 2023, 5-Year Estimates, Table DP03

**Household Income by Broad Category  
Clackamas County, 2023**

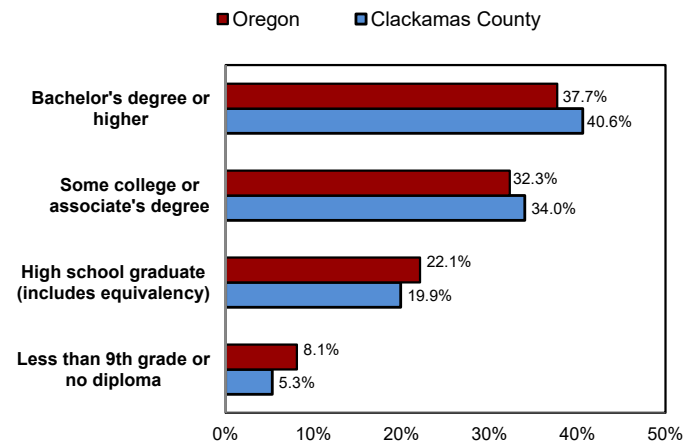


Source: U.S. Census, Table DP03, 2023 5-year

## Education

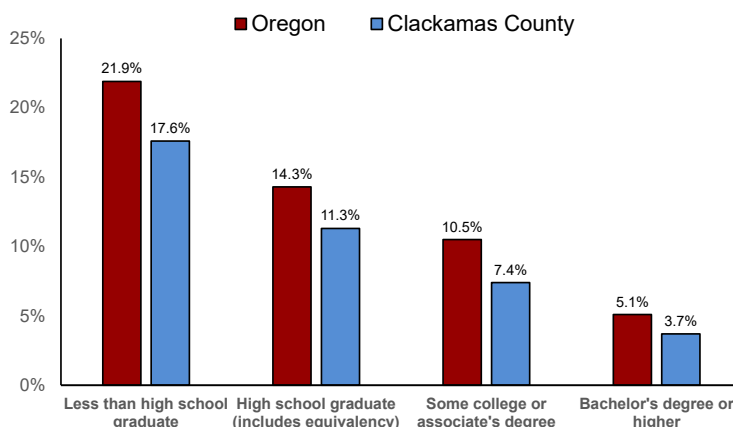
- Compared with Oregon, Clackamas County had a higher portion of its population (25 years and older) both with a bachelor's degree or higher (40.6%) and some college or associate's degree (34.0%) in 2023.
- Contrastingly, the county had a lower portion of its population who were high school graduates (19.9%) and the population with less than 9th grade or no diploma (5.3%)

**Educational Attainment: 2023**  
(Population 25 years and over)



Source: Census, 2023 ACS 1-year estimates, Table S1501

**Poverty Rate for Population 25+ by Educational Attainment: Clackamas County and Oregon (2023)**

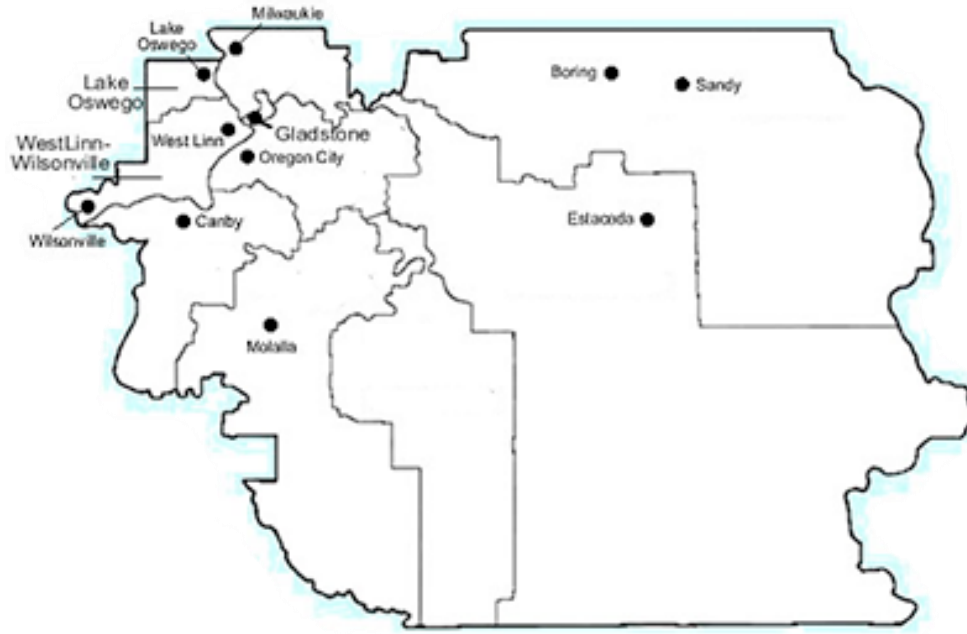


Source: Census, ACS, 2023, 5-year estimates, Table S1501

## Poverty

- In 2023, the average poverty rate of all people living in Clackamas County was at 7.5% compared with 11.9% in Oregon.
- The level of educational attainment seemed to significantly influence the rate of poverty in the county in 2023.
- Clackamas County residents with less than a high school education had a much higher poverty rate at 17.6% than residents with either a high school diploma (11.3%), some college or associate's degree (7.4%), or a bachelor's degree or higher (3.7%).

# Cities in Clackamas County



## City Demographic Fast Facts

2023	Median Age	Bachelor's Degree or Higher (25 years and older)	Median Household Income	Worked from Home	People whose income in past 12 months fell below the poverty level	Veteran Status (18 years and older)	Disability Status	Households with broadband internet subscription
<b>Clackamas County</b>	42.1	39.7%	\$ 100,360	19.0%	7.5%	6.8%	12.7%	92.9%
<b>Canby</b>	41.3	30.5%	\$ 100,268	12.2%	6.8%	7.1%	12.8%	91.6%
<b>Estacada</b>	37.8	13.5%	\$ 82,909	12.6%	23.5%	12.4%	14.9%	88.6%
<b>Gladstone</b>	45.0	23.6%	\$ 90,395	21.5%	13.0%	10.3%	16.9%	89.3%
<b>Happy Valley</b>	39.7	46.4%	\$ 120,324	21.2%	6.9%	5.9%	8.8%	95.5%
<b>Lake Oswego</b>	46.5	75.1%	\$ 140,441	29.8%	3.1%	5.6%	8.7%	96.5%
<b>Milwaukie</b>	39.9	40.9%	\$ 82,422	22.3%	6.5%	7.8%	14.2%	90.9%
<b>Molalla</b>	32.5	18.0%	\$ 83,996	13.9%	7.1%	6.5%	15.3%	90.7%
<b>Oregon City</b>	36.4	32.5%	\$ 94,648	14.2%	7.0%	7.3%	14.4%	94.1%
<b>Sandy</b>	38.5	24.8%	\$ 102,201	13.6%	7.8%	8.7%	12.8%	94.4%
<b>West Linn</b>	43.3	62.5%	\$ 138,526	31.9%	5.2%	5.5%	9.3%	95.9%
<b>Wilsonville</b>	38.7	44.5%	\$ 87,371	12.0%	8.8%	7.1%	11.5%	93.1%

Source: Census, ACS, 2023, 5-year estimates, Tables S0101, DP02, DP03, and B01002