

FOR IMMEDIATE RELEASE: September 23, 2025

CONTACT INFORMATION:

Brian Rooney, Regional Economist
brian.t.rooney@employ.oregon.gov
(541) 359-9546

Employment in Lane County (Eugene MSA)

Lane County Payroll Employment Increases by 1,600 in August

Lane County's seasonally adjusted payroll employment increased 1,600 in August after a loss of 1,000 in July and a loss of 900 in June.

In the not seasonally adjusted private-sector industries in August, there were gains in health care and social assistance (400) and professional and business services (200).

Government lost 100 jobs in August due to a seasonal loss of 200 in local government education that was countered by a gain of 100 in noneducation local government.

When comparing August 2025 with August 2024, total nonfarm employment dropped 800 jobs on a seasonally adjusted basis for a loss of 0.5%. There were gains in private education and health services (1,800) and leisure and hospitality (700). There were relatively large losses in professional and business services (-1,000), construction (-300), manufacturing (-300), wholesale trade (-300), retail trade (-300), and financial activities (-200).

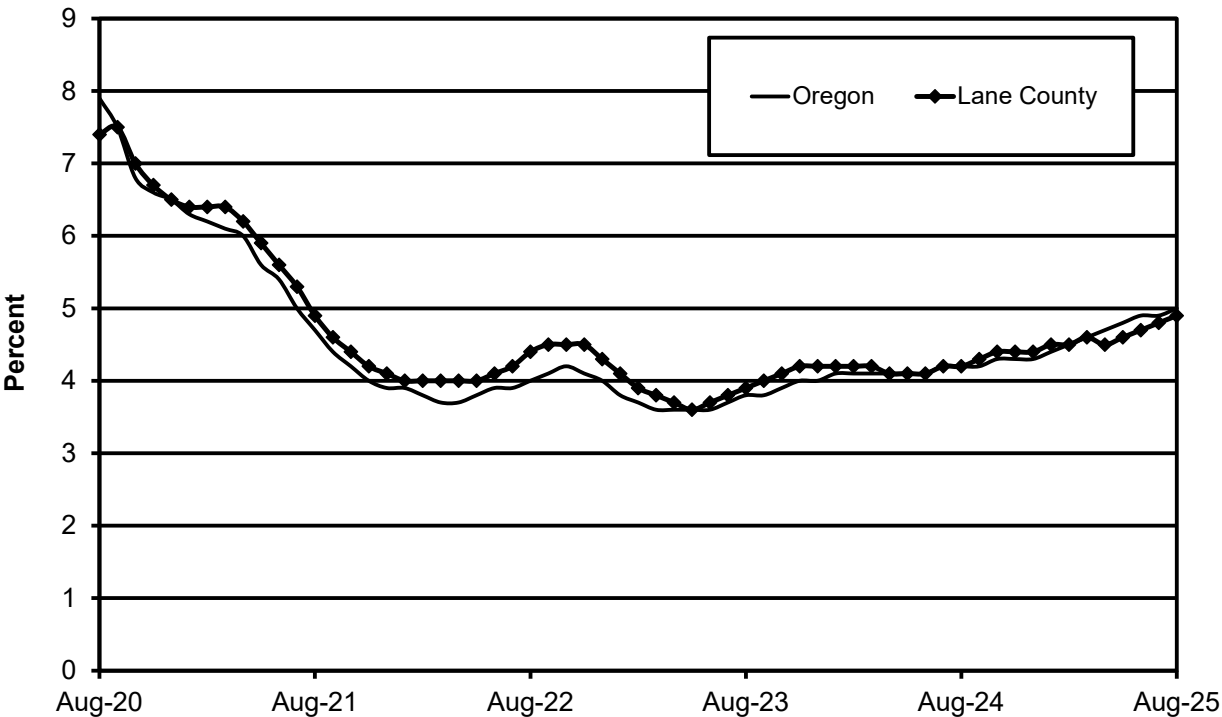
There was an over-the-year gain of 300 in government in August due to a gain in local government.

Lane County's seasonally adjusted unemployment rate was essentially unchanged at 4.9% in August compared with a revised 4.8% in July. The rate is up significantly from the 4.2% recorded in August 2024. Lane County's record low rate was 3.5% in November 2019. The Oregon seasonally adjusted August rate was 5.0% and the U.S. rate was 4.3%.

Next Press Releases

The Oregon Employment Department plans to release the September county and metropolitan area unemployment rates on Tuesday, Oct. 21, and the statewide unemployment rate and employment survey data for September on Wednesday, Oct. 15.

Seasonally Adjusted Unemployment Rates





Workforce & Economic Research Division

QualityInfo.org

September 23, 2025

Lane County Current Labor Force and Industry Employment

	--Change From--				
	August 2025	July 2025	August 2024	July 2025	August 2024
Labor Force Status					
Civilian labor force	189,406	188,548	186,634	858	2,772
Unemployed	10,530	10,084	8,427	446	2,103
Unemployment rate	5.6%	5.3%	4.5%	0.3	1.1
<i>Unemployment rate (seasonally adjusted)</i>	<i>4.9%</i>	<i>4.8%</i>	<i>4.2%</i>	<i>0.1</i>	<i>0.7</i>
Employed	178,876	178,464	178,207	412	669
Nonfarm Payroll Employment					
Total nonfarm employment	161,500	160,600	161,000	900	500
<i>Total nonfarm employment (seasonally adjusted)</i>	<i>163,100</i>	<i>161,500</i>	<i>163,900</i>	<i>1,600</i>	<i>-800</i>
Total private	134,800	133,800	134,600	1,000	200
Mining, logging, and construction	8,500	8,500	8,800	0	-300
Mining and logging	1,000	1,000	1,000	0	0
Construction	7,500	7,500	7,800	0	-300
Manufacturing	14,200	14,100	14,500	100	-300
Durable goods	9,100	9,100	9,300	0	-200
Wood product manufacturing	3,900	3,900	3,800	0	100
Nondurable goods	5,100	5,000	5,200	100	-100
Trade, transportation, and utilities	28,300	28,200	28,900	100	-600
Wholesale trade	5,900	5,900	6,200	0	-300
Retail trade	18,800	18,800	19,100	0	-300
Food and beverage retailers	4,800	4,800	4,900	0	-100
Transportation, warehousing, and utilities	3,600	3,500	3,600	100	0
Information	2,000	2,000	1,900	0	100
Financial activities	8,800	8,700	9,000	100	-200
Professional and business services	17,400	17,200	18,400	200	-1,000
Administrative and support services	6,200	6,100	7,200	100	-1,000
Private education and health services	31,800	31,400	30,000	400	1,800
Health care and social assistance	29,600	29,200	28,100	400	1,500
Leisure and hospitality	18,600	18,600	17,900	0	700
Accommodation and food services	16,400	16,400	15,800	0	600
Food services and drinking places	14,600	14,600	14,000	0	600
Other services	5,200	5,100	5,200	100	0
Government	26,700	26,800	26,400	-100	300
Federal government	2,000	2,000	2,000	0	0
State government	2,100	2,100	2,100	0	0
State education	0	0	0	0	0
Local government	22,600	22,700	22,300	-100	300
Local education	14,200	14,400	14,100	-200	100

The most recent month is preliminary, the prior month is revised. Prepared in cooperation with the U.S. Department of Labor, Bureau of Labor Statistics.

Civilian labor force includes employed and unemployed individuals 16 years and older by place of residence.

Employed includes payroll employment, self-employed, unpaid family workers, domestics, agriculture, and labor disputants.

Unemployment rate is calculated by dividing unemployed by civilian labor force.

Nonfarm Payroll Employment: Data are by place of work and cover full- and part-time employees who worked or received pay for the pay period that includes the 12th of the month. The data exclude the self-employed, volunteers, unpaid family workers, and domestics.

The Oregon Employment Department and the U.S. Bureau of Labor Statistics (BLS) work cooperatively to develop and publish monthly payroll employment and labor force data for Oregon's metropolitan areas and counties. The estimates of monthly job gains and losses are based on a survey of businesses. The estimates of unemployment are based on a survey of households and other sources.

The Oregon Employment Department payroll employment estimates are revised quarterly using information from unemployment insurance tax records. All department publications use data from this *official Oregon series* unless noted.

The department also makes the BLS-produced nonfarm payroll employment series for metropolitan areas available. These are revised annually by BLS.

You can subscribe to receive notification of new articles and publications from QualityInfo.org. To subscribe, go to www.qualityinfo.org/subscribe, enter your email address and click Sign In. In the Publication section, click on the + sign next to a report type category and then click on the geography(s) you are interested in. Take some time to browse the other publications on the page and see if there are some you'd like to receive an email notification for. You can receive notifications on a daily, weekly, or monthly schedule – whichever is most convenient for you. You can change your preferences – or unsubscribe – at any time.

The pdf version of the news release, including tables and graphs, can be found at www.qualityinfo.org/press-release/. To obtain the data in other formats such as in Excel, visit QualityInfo.org, select Tools, and choose LAUS or CES from the dropdown menu. To request the press release as a Word document, contact the person shown at the top of this press release.

To file an Unemployment Insurance claim, visit our online claims system or call our contact centers, where Employment Department staff are ready to help by phone, at 1-877-FILE-4-UI (1-877-345-3484). For help finding jobs and training resources, go to: www.WorkSourceOregon.org.

The Oregon Employment Department (OED) is an equal opportunity agency. Everyone has a right to use OED programs and services. OED provides free help. Some examples are: Sign language and spoken language interpreters, written materials in other languages, braille, large print, audio and other formats. If you need help, please call 971-673-6400. TTY users call 711. You can also ask for help at OED_Communications@employ.oregon.gov.

El Departamento de Empleo de Oregon (OED) es una agencia de igualdad de oportunidades. El OED proporciona ayuda gratuita para que usted pueda utilizar nuestros servicios. Algunos ejemplos son intérpretes de lengua de señas e idiomas hablados, materiales escritos en otros idiomas, letra grande, audio y otros formatos. Para obtener ayuda, por favor llame al 503-947-1444. Usuarios de TTY pueden llamar al 711. También puede enviar un correo electrónico a OED_Communications@employ.oregon.gov.

###