

FOR IMMEDIATE RELEASE: July 22, 2025

CONTACT INFORMATION:

Brian Rooney, Regional Economist  
brian.t.rooney@employ.oregon.gov  
(541) 359-9546

## **Employment in Lane County (Eugene MSA)**

### **Lane County Employment Drops by 700 in June**

Lane County's seasonally adjusted payroll employment dropped 700 in June after losses of 200 in May and 200 in March.

In the not seasonally adjusted private-sector industries in June, there was a large seasonal gain in leisure and hospitality (400). There were losses in health care and social assistance (-700), and retail trade (-200).

Government lost 300 jobs in June from a seasonal loss of 500 in local education that was countered by a gain of 200 in noneducation federal government.

When comparing June 2025 with June 2024, total nonfarm employment dropped 600 jobs on a seasonally adjusted basis for a loss of 0.4%. There were relatively large gains in leisure and hospitality (600) and private education and health services (500). There were relatively large losses in retail trade (-600), professional and business services (-600), manufacturing (-400) and construction (-300).

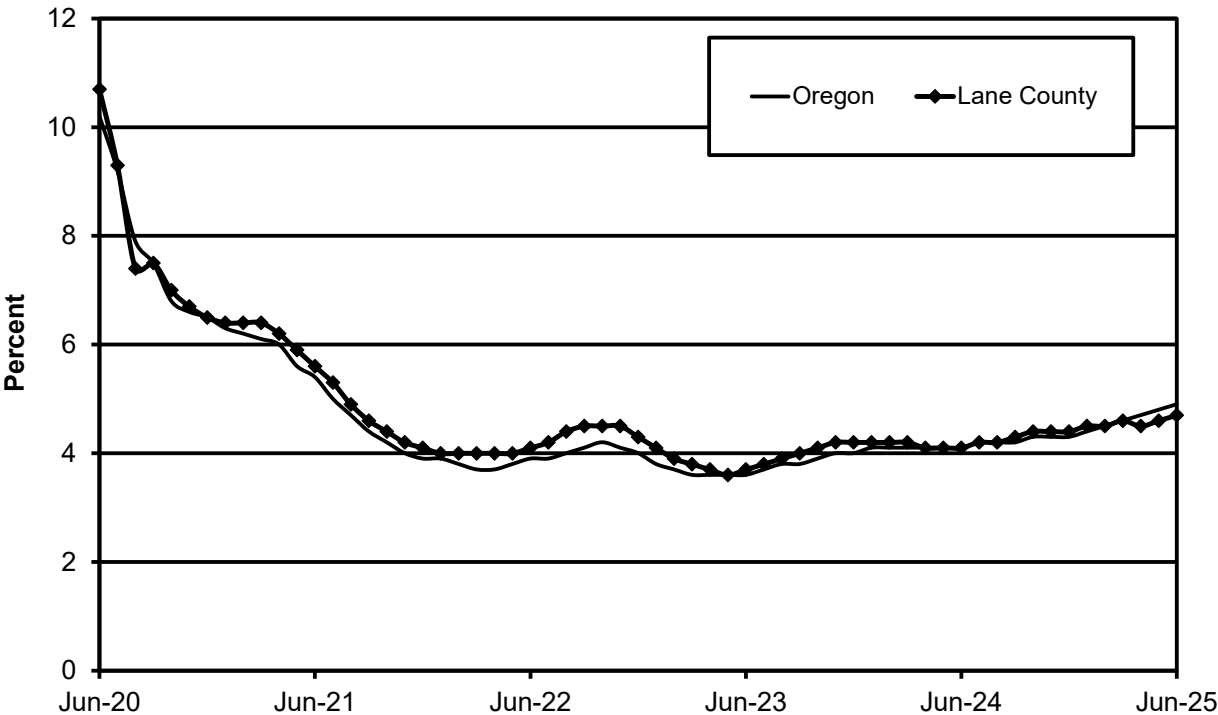
There was an over-the-year increase of 1,000 in government in June due to gains in local education (700), which includes the University of Oregon, noneducation local government (200) and state government (100).

Lane County's seasonally adjusted unemployment rate was essentially unchanged at 4.7% in June compared with a revised 4.6% in May. The rate is up significantly from the 4.1% recorded in June of 2024. Lane County's record low rate was 3.5% in November 2019. The Oregon seasonally adjusted November rate was 4.9% and the U.S. rate was 4.1%.

### **Next Press Releases**

The Oregon Employment Department plans to release the July county and metropolitan area unemployment rates on Tuesday, August 19, and the statewide unemployment rate and employment survey data for July on Wednesday, Aug. 13.

# Seasonally Adjusted Unemployment Rates





Workforce &amp; Economic Research Division

QualityInfo.org

July 22, 2025

## Eugene-Springfield MSA Current Labor Force and Industry Employment

	--Change From--				
	June 2025	May 2025	June 2024	May 2025	June 2024
<b>Labor Force Status</b>					
Civilian labor force	190,700	190,015	189,564	685	1,136
Unemployed	9,857	8,518	7,833	1,339	2,024
Unemployment rate	5.2%	4.5%	4.1%	0.7	1.1
<i>Unemployment rate (seasonally adjusted)</i>	<i>4.7%</i>	<i>4.6%</i>	<i>4.1%</i>	<i>0.1</i>	<i>0.6</i>
Employed	180,843	181,497	181,731	-654	-888
<b>Nonfarm Payroll Employment</b>					
Total nonfarm employment	166,100	166,900	166,500	-800	-400
<i>Total nonfarm employment (seasonally adjusted)</i>	<i>163,700</i>	<i>164,400</i>	<i>164,300</i>	<i>-700</i>	<i>-600</i>
Total private	133,100	133,600	134,500	-500	-1,400
Mining, logging, and construction	8,300	8,100	8,700	200	-400
Mining and logging	900	800	1,000	100	-100
Construction	7,400	7,300	7,700	100	-300
Manufacturing	14,100	14,100	14,500	0	-400
Durable goods	9,000	9,000	9,300	0	-300
Wood product manufacturing	3,800	3,800	3,800	0	0
Nondurable goods	5,100	5,100	5,200	0	-100
Trade, transportation, and utilities	28,200	28,400	29,000	-200	-800
Wholesale trade	5,900	5,900	6,200	0	-300
Retail trade	18,600	18,800	19,200	-200	-600
Food and beverage retailers	4,800	4,800	4,800	0	0
Transportation, warehousing, and utilities	3,700	3,700	3,600	0	100
Information	2,000	2,000	2,000	0	0
Financial activities	8,800	8,800	9,000	0	-200
Professional and business services	17,300	17,400	17,900	-100	-600
Administrative and support services	6,200	6,300	6,900	-100	-700
Private education and health services	30,700	31,400	30,200	-700	500
Health care and social assistance	28,500	29,200	28,100	-700	400
Leisure and hospitality	18,700	18,300	18,100	400	600
Accommodation and food services	16,200	16,000	15,900	200	300
Food services and drinking places	14,500	14,400	14,100	100	400
Other services	5,000	5,100	5,100	-100	-100
Government	33,000	33,300	32,000	-300	1,000
Federal government	2,000	2,000	2,000	0	0
State government	2,100	2,100	2,000	0	100
State education	0	0	0	0	0
Local government	28,900	29,200	28,000	-300	900
Local education	20,500	21,000	19,800	-500	700

The most recent month is preliminary, the prior month is revised. Prepared in cooperation with the U.S. Department of Labor, Bureau of Labor Statistics.

Civilian labor force includes employed and unemployed individuals 16 years and older by place of residence.

Employed includes payroll employment, self-employed, unpaid family workers, domestics, agriculture, and labor disputants.

Unemployment rate is calculated by dividing unemployed by civilian labor force.

Nonfarm Payroll Employment: Official Oregon Series. Data are by place of work and cover full- and part-time employees who worked or received pay for the pay period that includes the 12th of the month. The data exclude the self-employed, volunteers, unpaid family workers, and domestics.

The Oregon Employment Department and the U.S. Bureau of Labor Statistics (BLS) work cooperatively to develop and publish monthly payroll employment and labor force data for Oregon's metropolitan areas and counties. The estimates of monthly job gains and losses are based on a survey of businesses. The estimates of unemployment are based on a survey of households and other sources.

The Oregon Employment Department payroll employment estimates are revised quarterly using information from unemployment insurance tax records. All department publications use data from this *official Oregon series* unless noted.

The department also makes the BLS-produced nonfarm payroll employment series for metropolitan areas available. These are revised annually by BLS.

You can subscribe to receive notification of new articles and publications from QualityInfo.org. To subscribe, go to [www.qualityinfo.org/subscribe](http://www.qualityinfo.org/subscribe), enter your email address and click Sign In. In the Publication section, click on the + sign next to a report type category and then click on the geography(s) you are interested in. Take some time to browse the other publications on the page and see if there are some you'd like to receive an email notification for. You can receive notifications on a daily, weekly, or monthly schedule – whichever is most convenient for you. You can change your preferences – or unsubscribe – at any time.

The pdf version of the news release, including tables and graphs, can be found at [www.qualityinfo.org/press-release/](http://www.qualityinfo.org/press-release/). To obtain the data in other formats such as in Excel, visit QualityInfo.org, select Tools, and choose LAUS or CES from the dropdown menu. To request the press release as a Word document, contact the person shown at the top of this press release.

To file an Unemployment Insurance claim, visit our online claims system or call our contact centers, where Employment Department staff are ready to help by phone, at 1-877-FILE-4-UI (1-877-345-3484). For help finding jobs and training resources, go to: [www.WorkSourceOregon.org](http://www.WorkSourceOregon.org).

The Oregon Employment Department (OED) is an equal opportunity agency. Everyone has a right to use OED programs and services. OED provides free help. Some examples are: Sign language and spoken language interpreters, written materials in other languages, braille, large print, audio and other formats. If you need help, please call 971-673-6400. TTY users call 711. You can also ask for help at [OED\\_Communications@employ.oregon.gov](mailto:OED_Communications@employ.oregon.gov).

El Departamento de Empleo de Oregon (OED) es una agencia de igualdad de oportunidades. El OED proporciona ayuda gratuita para que usted pueda utilizar nuestros servicios. Algunos ejemplos son intérpretes de lengua de señas e idiomas hablados, materiales escritos en otros idiomas, letra grande, audio y otros formatos. Para obtener ayuda, por favor llame al 503-947-1444. Usuarios de TTY pueden llamar al 711. También puede enviar un correo electrónico a [OED\\_Communications@employ.oregon.gov](mailto:OED_Communications@employ.oregon.gov).

###