

FOR IMMEDIATE RELEASE: Dec. 16, 2025

CONTACT INFORMATION:

Brian Rooney, Regional Economist
brian.t.rooney@employ.oregon.gov
(541) 359-9546

Employment in Douglas County

Douglas County's Unemployment Rate was 6.2% in September

Douglas County's seasonally adjusted unemployment rate was 6.2% in September compared with a revised 6.0% in August. The rate is up significantly from 5.5% in September 2024. Douglas County's record low unemployment rate was set in November 2019 at 4.4%. The Oregon seasonally adjusted September rate was 5.2% and the U.S. rate was 4.4%.

Douglas County's seasonally adjusted payroll employment increased by 110 jobs in September after a gain of 80 in August and a decrease of 210 in July.

In the not seasonally adjusted private-sector industries in September, there were gains of 20 each in professional and business services, and private education and health services. There were relatively large losses in leisure and hospitality (-100), transportation, warehousing, and utilities (-40), and manufacturing (-30).

Government increased by 490 in the month of September from a gain of 540 in local education from the beginning of a new school year that was countered by a loss of 50 in noneducation local government.

When comparing September 2025 with September 2024, seasonally adjusted total nonfarm employment decreased by 110 jobs, or -0.3%. There were relatively large private-sector over-the-year gains in private education and health services (290) and professional and business services (60). There were relatively large losses in retail trade (-210), manufacturing (-160), and leisure and hospitality (-60).

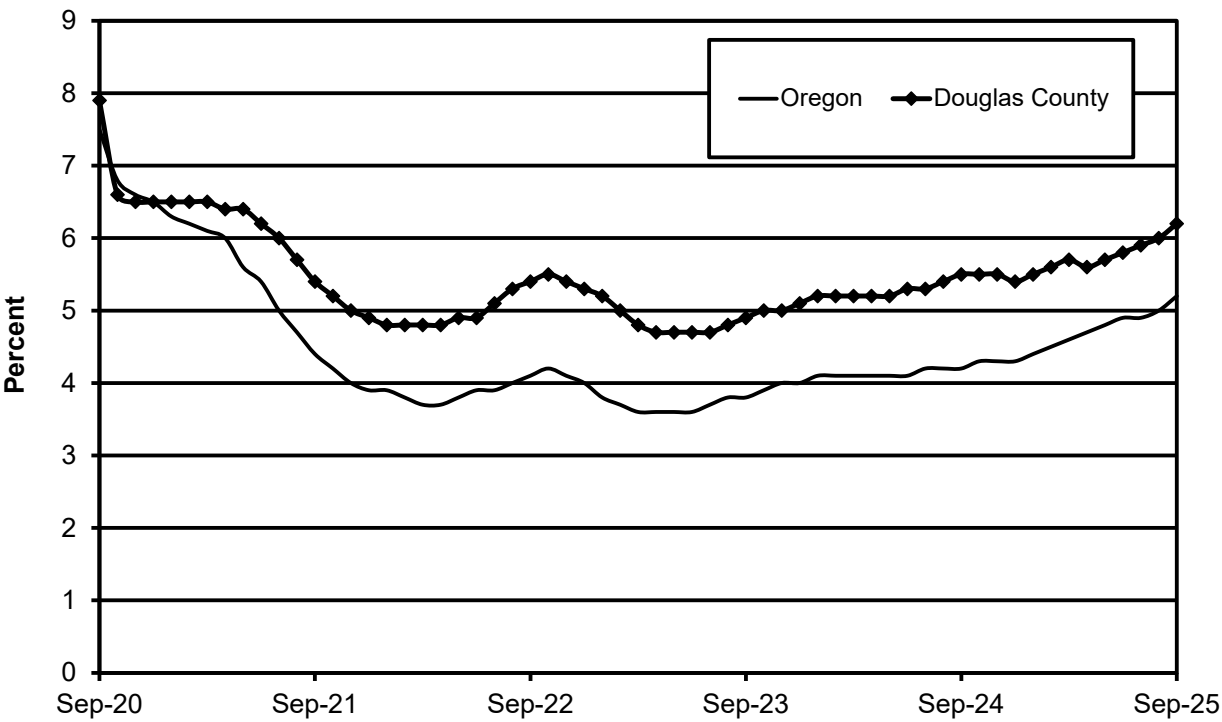
Government rose 100 over the year in September due to a gain of 110 in local government that was countered by a loss of 10 in federal government.

Next Press Releases

The Oregon Employment Department plans to release the October and November county and metropolitan area unemployment rate and employment survey data on Tuesday, Jan. 13, and the

statewide unemployment rate and employment survey data for October and November on Wednesday, Jan. 7.

Seasonally Adjusted Unemployment Rates





Workforce & Economic Research Division

QualityInfo.org

December 16, 2025

Douglas County Current Labor Force and Industry Employment

				--Change From--	
	September 2025	August 2025	September 2024	August 2025	September 2024
Labor Force Status					
Civilian labor force	47,346	47,291	46,576	55	770
Unemployed	2,956	3,127	2,315	-171	641
Unemployment rate	6.2%	6.6%	5.0%	-0.4	1.2
<i>Unemployment rate (seasonally adjusted)</i>	6.2%	6.0%	5.5%	0.2	0.7
Employed	44,390	44,164	44,261	226	129
Nonfarm Payroll Employment					
Total nonfarm employment	38,880	38,570	38,980	310	-100
<i>Total nonfarm employment (seasonally adjusted)</i>	38,650	38,540	38,760	110	-110
Total private	30,860	31,040	31,060	-180	-200
Mining, logging, and construction	2,600	2,620	2,620	-20	-20
Mining and logging	830	840	840	-10	-10
Construction	1,770	1,780	1,780	-10	-10
Manufacturing	4,370	4,400	4,530	-30	-160
Durable goods	3,900	3,920	4,010	-20	-110
Wood product manufacturing	2,590	2,620	2,610	-30	-20
Nondurable goods	470	480	520	-10	-50
Trade, transportation, and utilities	6,830	6,880	7,090	-50	-260
Wholesale trade	860	870	870	-10	-10
Retail trade	4,540	4,540	4,750	0	-210
Food and beverage retailers	1,060	1,060	1,110	0	-50
General merchandise retailers	1,160	1,140	1,150	20	10
Transportation, warehousing, and utilities	1,430	1,470	1,470	-40	-40
Information	310	310	340	0	-30
Financial activities	1,330	1,350	1,340	-20	-10
Professional and business services	3,080	3,060	3,020	20	60
Private education and health services	7,260	7,240	6,970	20	290
Leisure and hospitality	3,820	3,920	3,880	-100	-60
Food services and drinking places	2,960	2,980	2,960	-20	0
Other services	1,260	1,260	1,270	0	-10
Government	8,020	7,530	7,920	490	100
Federal government	1,510	1,510	1,520	0	-10
State government	700	700	700	0	0
Local government	5,810	5,320	5,700	490	110
Indian tribal	1,130	1,130	1,100	0	30
Local education	3,070	2,530	3,030	540	40
Local government excluding education and tribal	1,610	1,660	1,570	-50	40

The most recent month is preliminary, the prior month is revised. Prepared in cooperation with the U.S. Department of Labor, Bureau of Labor Statistics.

Civilian labor force includes employed and unemployed individuals 16 years and older by place of residence.

Employed includes payroll employment, self-employed, unpaid family workers, domestics, agriculture, and labor disputants.

Unemployment rate is calculated by dividing unemployed by civilian labor force.

Nonfarm Payroll Employment: Data are by place of work and cover full- and part-time employees who worked or received pay for the pay period that includes the 12th of the month. The data exclude the self-employed, volunteers, unpaid family workers, and domestics.

The Oregon Employment Department and the U.S. Bureau of Labor Statistics (BLS) work cooperatively to develop and publish monthly payroll employment and labor force data for Oregon's metropolitan areas and counties. The estimates of monthly job gains and losses are based on a survey of businesses. The estimates of unemployment are based on a survey of households and other sources.

The Oregon Employment Department payroll employment estimates are revised quarterly using information from unemployment insurance tax records. All department publications use data from this *official Oregon series* unless noted.

The department also makes the BLS-produced nonfarm payroll employment series for metropolitan areas available. These are revised annually by BLS.

You can subscribe to receive notification of new articles and publications from QualityInfo.org. To subscribe, go to www.qualityinfo.org/subscribe, enter your email address and click Sign In. In the Publication section, click on the + sign next to a report type category and then click on the geography(s) you are interested in. Take some time to browse the other publications on the page and see if there are some you'd like to receive an email notification for. You can receive notifications on a daily, weekly, or monthly schedule – whichever is most convenient for you. You can change your preferences – or unsubscribe – at any time.

The pdf version of the news release, including tables and graphs, can be found at www.qualityinfo.org/press-release/. To obtain the data in other formats such as in Excel, visit QualityInfo.org, select Tools, and choose LAUS or CES from the dropdown menu. To request the press release as a Word document, contact the person shown at the top of this press release.

To file an Unemployment Insurance claim, visit our online claims system or call our contact centers, where Employment Department staff are ready to help by phone, at 1-877-FILE-4-UI (1-877-345-3484). For help finding jobs and training resources, go to: www.WorkSourceOregon.org

The Oregon Employment Department (OED) is an equal opportunity agency. Everyone has a right to use OED programs and services. OED provides free help. Some examples are: Sign language and spoken language interpreters, written materials in other languages, braille, large print, audio and other formats. If you need help, please call 971-673-6400. TTY users call 711. You can also ask for help at OED_Communications@employ.oregon.gov.

El Departamento de Empleo de Oregon (OED) es una agencia de igualdad de oportunidades. El OED proporciona ayuda gratuita para que usted pueda utilizar nuestros servicios. Algunos ejemplos son intérpretes de lengua de señas e idiomas hablados, materiales escritos en otros idiomas, letra grande, audio y otros formatos. Para obtener ayuda, por favor llame al 503-947-1444. Usuarios de TTY pueden llamar al 711. También puede enviar un correo electrónico a OED_Communications@employ.oregon.gov.

###