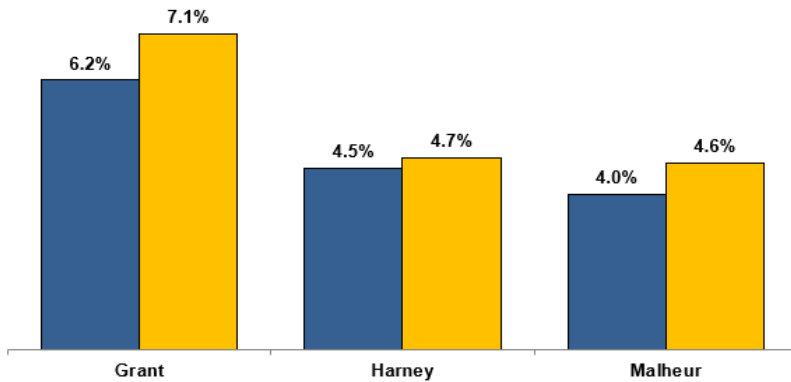


Unemployment Rates (Seasonally Adjusted)

■ July 2024

■ July 2025



Source: Oregon Employment Department, LAUS

Nonfarm Employment Change

July 2024 to July 2025

Grant County lost an estimated 90 jobs over the year. The private sector decreased by 40 jobs and the public sector decreased by 50 jobs. Manufacturing, and federal government had the most notable losses. Construction; transportation, warehousing, and utilities; and private education and health services led gains.

Harney County's seasonally adjusted employment increased by an estimated 50 jobs over the year. The private sector and public sector both gained 20 jobs each. Losses were primarily led by federal government. Private education and health services, and local government led job gains.

Malheur County decreased by an estimated 90 jobs over the year. The private sector lost 70 jobs with the public sector losing 20 jobs. Leisure and hospitality, retail trade, and local government led losses. Notable gains came from private education and health services, wholesale trade, and state government.

	Grant	Harney	Malheur
	Total Nonfarm Employment (90)	Total Nonfarm Employment 50	Total Nonfarm Employment (90)
Construction	20	Private Education / Health Services 40	Private Education / Health Services 60
Transportation / Warehousing / Utilities	20	Local Government 30	Wholesale Trade 30
Private Education / Health Services	20	Transportation / Warehousing / Utilities 10	State Government 20
Manufacturing	(80)	Federal Government (20)	Leisure / Hospitality (70)
Federal Government	(40)	Retail Trade (10)	Retail Trade (50)
Retail Trade	(10)	Leisure / Hospitality (10)	Local Government (50)

Source: Oregon Employment Department, CES

News and Articles

[Spring 2025 Hiring Among Oregon's Private Employers Unchanged from Winter 2025](#) by Anna Johnson

[Oregon Jobs in 2024: A Wage Data Perspective](#) by Molly Hendrickson

[Public Safety Telecommunicators – A Rewarding Career with High Wages](#) by Kristy Shaw

[A Transition to an Employer-Driven Market in Oregon](#) by Damon Runberg

Want to learn more about the Oregon economy?

Eastern Oregon: [Qualityinfo.org/eastern-oregon](https://qualityinfo.org/eastern-oregon)

Statewide: [QualityInfo.org](https://qualityinfo.org)

For questions, information requests, or to be added to the monthly distribution list, contact:

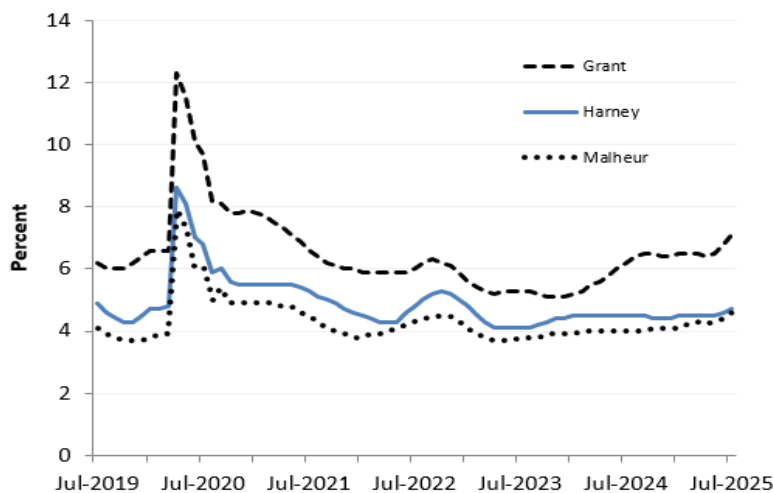
Jeremy Robertson, Workforce Analyst

Cell: (971) 718-4478

E-mail: Jeremy.E.Robertson@employ.oregon.gov



Seasonally Adjusted Unemployment Rate Over Time



Source: Oregon Employment Department, LAUS