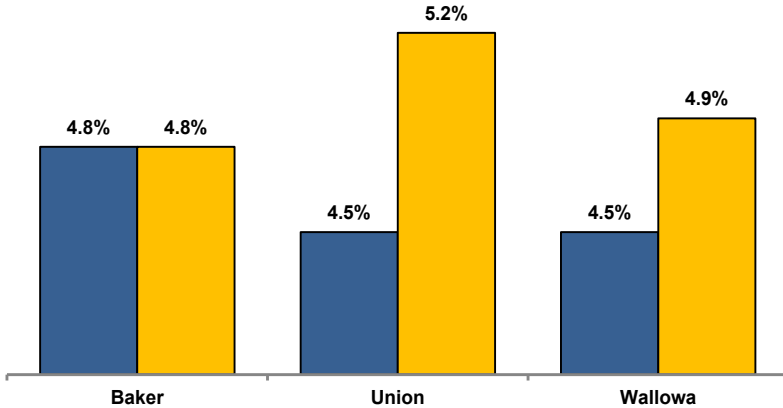


Unemployment Rates (Seasonally Adjusted)

■ March 2024 ■ March 2025



Unemployment Rate News

Baker County's seasonally adjusted unemployment rate for March 2025 was 4.8%, while Wallowa County came in at 4.9% and Union County at 5.2%. All three counties' rates were above Oregon's statewide rate of 4.6% and the national rate of 4.2%.

Baker County's rate was the same as its March 2024 rate while Wallowa and Union counties' rates were up over the year.

Wallowa County's March 2025 rate tied for its second lowest March rate since comparable statistics began in 1990, behind only March 2024. Baker County only had lower March rates in 2022 and 2023.

Nonfarm Employment Change

March 2024 to March 2025

Baker County gained an estimated 90 jobs over the year. The private sector increased by 10 jobs. Retail trade, and private education and health services led gains while leisure and hospitality led losses. The public sector increased by 80 jobs with gains in local government, state government, and federal government.

Union County employment decreased by an estimated 10 jobs over the year. The private sector dropped 110 jobs led by losses in manufacturing, construction, and professional and business services. Gains were led by private education and health services. The public sector rose by 100 jobs with gains in local government and state government overcoming a loss in federal government.

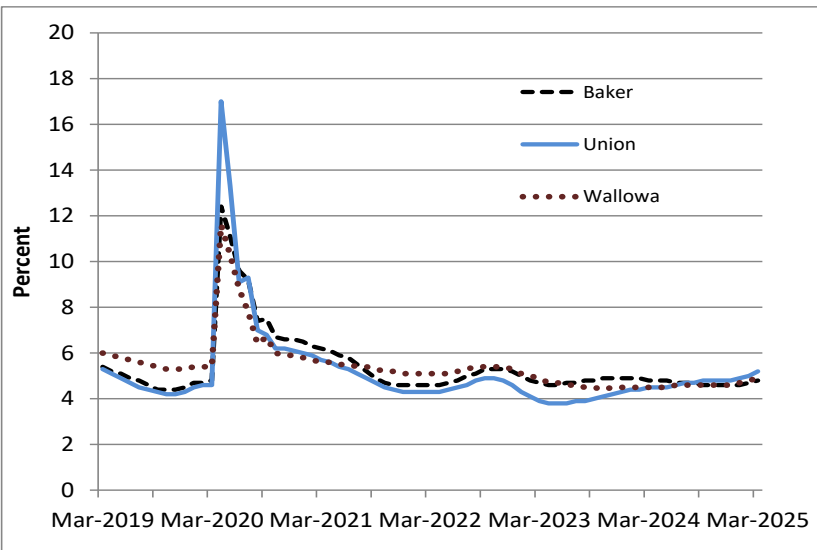
Wallowa County lost an estimated 30 jobs over the year. The private sector decreased by 60 jobs led by a loss in manufacturing. Gains were confined to other services. The public sector added 30 jobs with gains in state government and local government overcoming a loss in federal government.

Notable Industry Gains and Losses

Over-the-Year Employment Change from March 2024

	Baker	Union	Wallowa
	Retail Trade (+60)	Local Government (+90)	State Government (+20)
	Local Government (+60)	Private Education/Health Services (+60)	Local Government (+20)
	Private Education/Health Services (+30)	Financial Activities (+20)	Other Services (+10)
	Transportation/Warehousing/Utilities (+20)	State Government (+20)	
	Manufacturing (+10)		
	Leisure/Hospitality (-60)	Manufacturing (-60)	Manufacturing (-20)
	Professional/Business Services (-30)	Construction (-40)	Construction (-10)
	Construction (-20)	Professional/Business Services(-40)	Leisure/Hospitality (-10)

Unemployment rates rise but remain comparatively low



Want to learn more about the Oregon economy?

Follow us on X at: x.com/OED_Research

Visit our web site at: QualityInfo.org

Visit our subscription service at: qualityinfo.org/subscribe

For more economic or labor market data about Baker, Union or Wallowa counties, contact:

Tony Wendel, Regional Economist

Cell: 541-667-7027

E-mail: Tony.A.Wendel@employ.oregon.gov

Want to be added to the monthly distribution list?

E-mail me at: Tony.A.Wendel@employ.oregon.gov