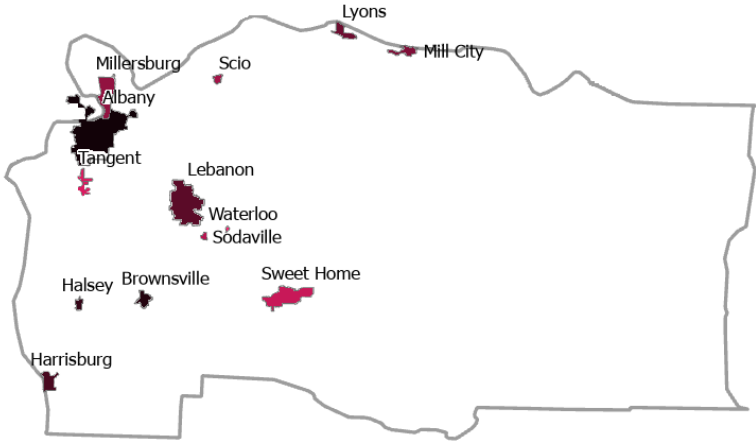
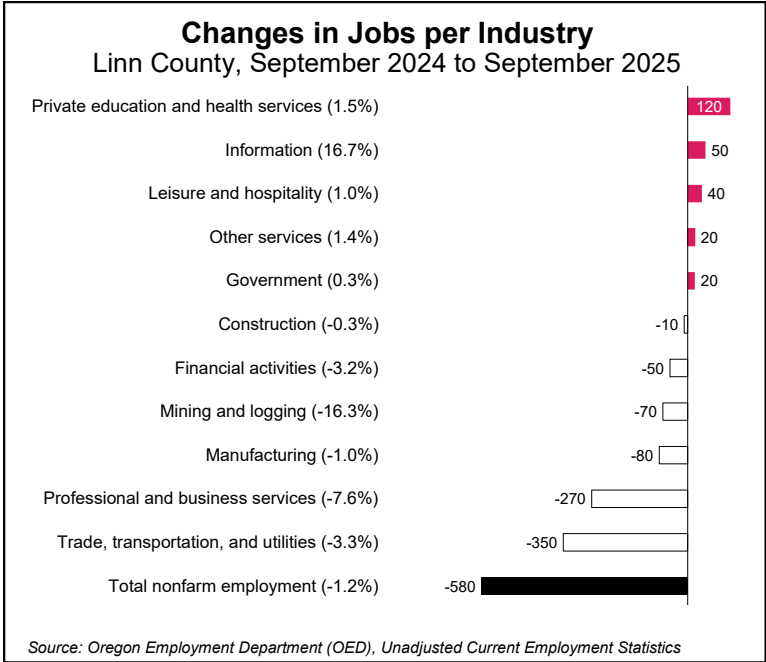
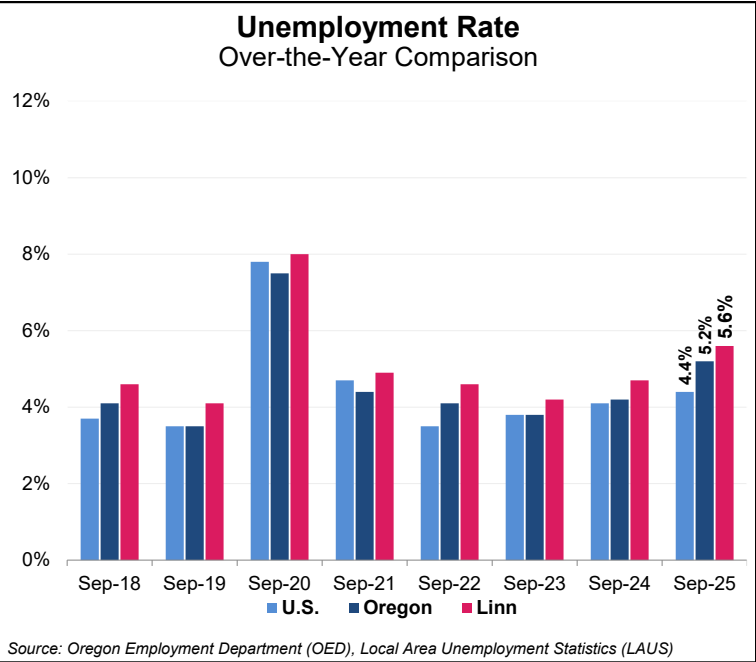


Linn County’s seasonally adjusted unemployment rate was 5.6% in September, up from its August rate of 5.4%. Oregon’s unemployment rate in September was 5.2%, up from its August rate of 5.0%. Employment fell by 580 jobs (-1.2%) over the year.

The largest employment gains were in private education and health services (120 jobs, +1.5%), followed by information (50 jobs, +16.7%). The largest over the year employment decline was in trade, transportation (350 fewer jobs, -3.3%).



EMPLOYMENT BY URBAN GROWTH BOUNDARY (UGB)—
 In 2024, the Albany UGB area had an average employment of around 24,000 jobs and \$1.3 billion in wages, averaging \$54,000. Health care had the largest employment in Albany.

Lebanon UGB followed with 7,370 jobs at an annual average wage of about \$52,000.

Millersburg UGB had the highest average wage in Linn County at \$92,000, consistent with its large employment in the relatively higher paying industry of manufacturing.

Area	Establishments	Average Employment	Total Wages	Average Wage	Largest Industry
Albany UGB	2,012	24,030	\$1,302,898,027	\$54,220	Health Care and Social Assistance
Brownsville UGB	68	344	\$19,733,122	\$57,364	Construction
Halsey UGB	25	199	\$10,260,458	\$51,560	Wholesale Trade
Harrisburg UGB	111	924	\$44,643,663	\$48,316	Manufacturing
Lebanon UGB	632	7,370	\$384,282,498	\$52,141	Health Care and Social Assistance
Lyons UGB	41	474	\$31,949,044	\$67,403	Manufacturing
Mill City UGB	62	736	\$40,927,825	\$55,608	Manufacturing
Millersburg UGB	121	2,805	\$257,622,776	\$91,844	Manufacturing
Scio UGB	40	353	\$16,587,767	\$46,991	Educational Services
Sodaville UGB	10	67	\$2,542,625	\$37,950	Educational Services
Sweet Home UGB	272	2,438	\$109,152,130	\$44,771	Retail Trade
Tangent UGB	88	1,044	\$72,932,629	\$69,859	Wholesale Trade
Waterloo UGB	8	27	\$764,400	\$28,311	Health Care and Social Assistance

Source: Oregon Employment Department, Quarterly Census of Employment and Wages (QCEW) 2024 geocoded

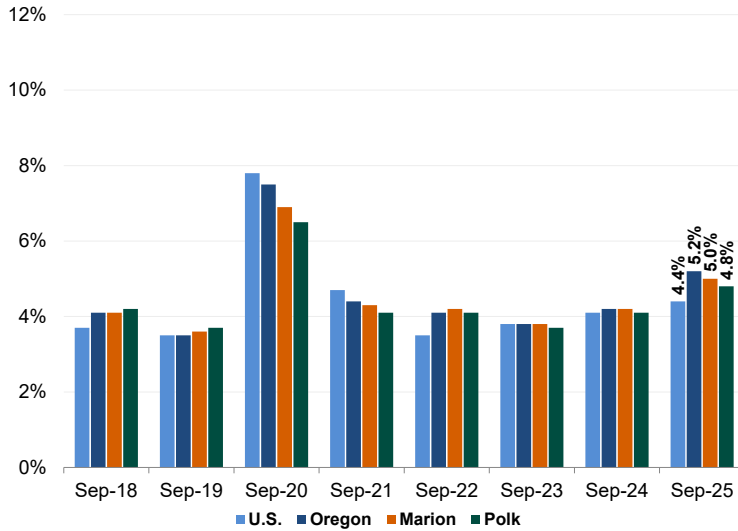
For more information and/or to be added to the monthly e-mail distribution list, contact:
 Henry Fields, Workforce Analyst, Oregon Employment Dept.
henry.f.fields@employ.oregon.gov | Tel.: (541) 359-9178

Join the conversation and stay informed.
Qualityinfo.org/mid-valley
 Contact us for online presentations and speaking engagements.

The Salem MSA's seasonally adjusted unemployment rate was 5.0% in September, up from its August rate of 4.9%. Oregon's statewide unemployment rate in September was 5.2%, up from 5.0%. Employment rose by 4,300 jobs (+2.3%) over the year.

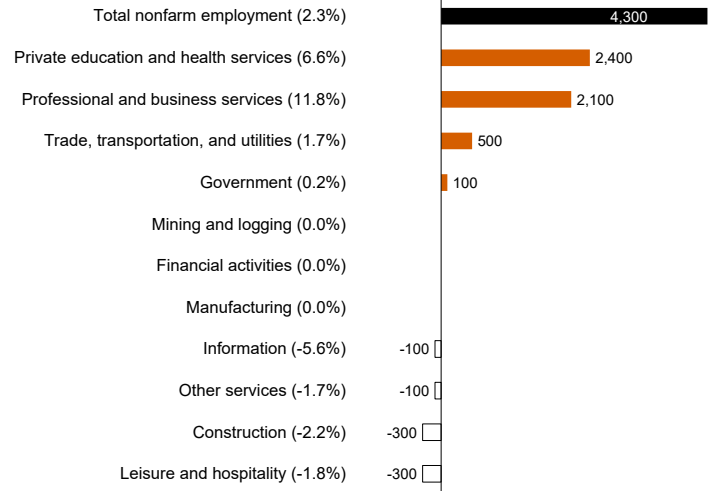
The largest employment gains were in private education and health services (2,400 jobs, +6.6%), followed by professional and business services (2,100 jobs, +11.8%). The largest employment declines over the year were in construction (300 fewer jobs, -2.2%) and in leisure and hospitality (300 fewer jobs, -1.8%).

**Unemployment Rate
Over-the-Year Comparison**

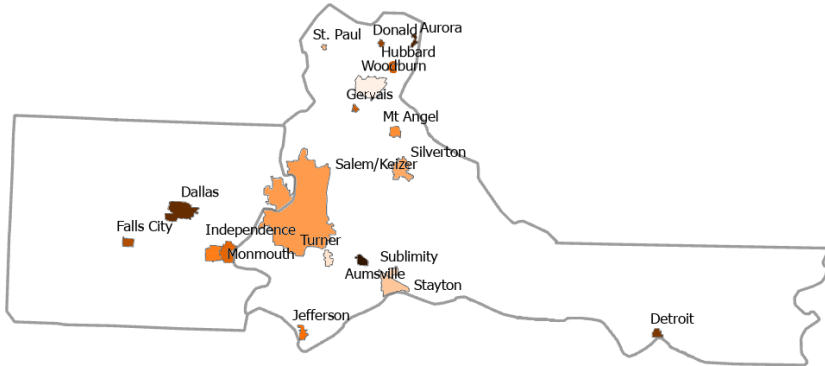


Source: Oregon Employment Department (OED), Local Area Unemployment Statistics (LAUS)

**Changes in Jobs per Industry
Salem MSA, September 2024 to September 2025**



Source: Oregon Employment Department (OED), Unadjusted Current Employment Statistics



EMPLOYMENT BY URBAN GROWTH BOUNDARY (UGB)— In 2024, Salem/Keizer averaged about 126,500 jobs and had \$8.4 billion in total wages, meaning an annual average wage of about \$67,000. The health care and social assistance industry is the largest employer in Salem/Keizer.

Woodburn UGB followed as the second-largest employment center with roughly 12,100 jobs and \$650 million in wages, averaging \$54,000 annually. Retail trade was its largest industry.

Area	Establishments	Average Employment	Total Wages	Average Wage	Largest Industry
Aumsville UGB	95	819	\$48,738,284	\$59,510	Manufacturing
Aurora UGB	56	619	\$31,889,644	\$51,518	Health Care and Social Assistance
Dallas UGB	547	5,147	\$256,232,257	\$49,783	Health Care and Social Assistance
Detroit UGB	12	61	\$1,697,567	\$27,829	Manufacturing
Donald UGB	40	641	\$46,909,963	\$73,182	Manufacturing
Falls City UGB	16	145	\$5,423,132	\$37,401	Health Care and Social Assistance
Gervais UGB	68	595	\$26,615,819	\$44,732	Natural Resources
Hubbard UGB	137	972	\$58,111,463	\$59,785	Manufacturing
Independence UGB	291	2,753	\$120,628,354	\$43,817	Health Care and Social Assistance
Jefferson UGB	65	467	\$24,633,626	\$52,749	Educational Services
Monmouth UGB	297	2,756	\$127,759,003	\$46,357	Educational Services
Mt. Angel UGB	123	1,484	\$91,865,882	\$61,904	Health Care and Social Assistance
Salem/Keizer UGB	10,221	126,521	\$8,419,359,620	\$66,545	Health Care and Social Assistance
Silverton UGB	475	3,948	\$214,747,475	\$54,394	Health Care and Social Assistance
St. Paul UGB	31	271	\$14,417,415	\$53,201	Educational Services
Stayton UGB	314	3,397	\$189,255,497	\$55,713	Health Care and Social Assistance
Sublimity UGB	76	605	\$33,044,033	\$54,618	Retail Trade
Turner UGB	73	737	\$39,742,540	\$53,925	Construction
Woodburn UGB	972	12,074	\$647,559,134	\$53,633	Retail Trade

Source: Oregon Employment Department, Quarterly Census of Employment and Wages (QCEW) 2024 geocoded

For more information and/or to be added to the monthly e-mail distribution list, contact:

Henry Fields, Workforce Analyst, Oregon Employment Dept.
henry.f. fields@employ.oregon.gov | Tel.: (541) 359-9178

Join the conversation and stay informed.

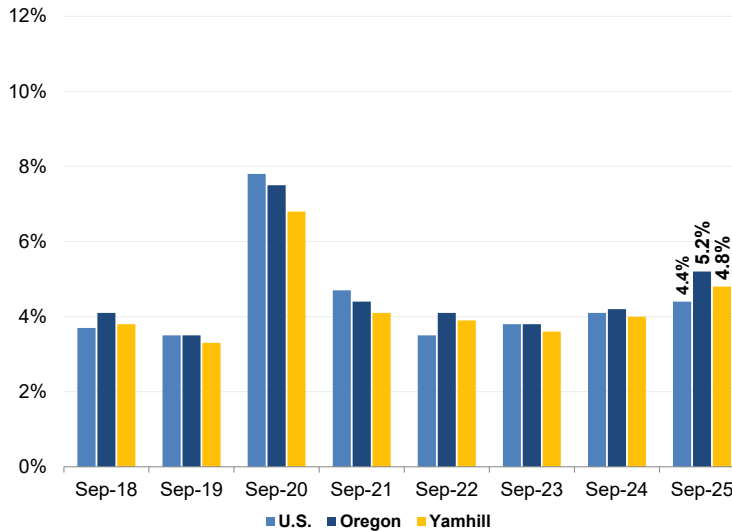
[Qualityinfo.org/mid-valley](https://qualityinfo.org/mid-valley)

Contact us for online presentations and speaking engagements.

Yamhill County's seasonally adjusted unemployment rate was 4.8% in September, up from its revised rate of 4.6% in August. Oregon's statewide unemployment rate in September was 5.2%. Employment rose by 250 jobs (+0.7%) over the year.

The largest employment gains were in private education and health services (420 jobs, +4.5%), followed by leisure and hospitality (170 jobs, +4.3%). The largest over the year employment decline occurred in manufacturing (180 fewer jobs, -2.6%).

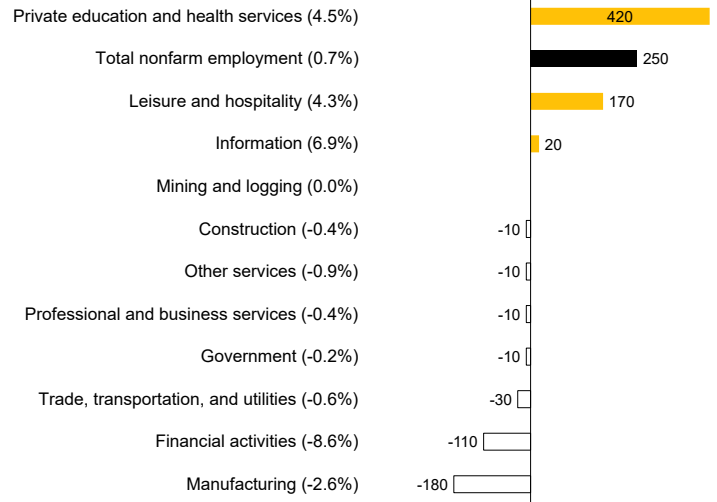
**Unemployment Rate
Over-the-Year Comparison**



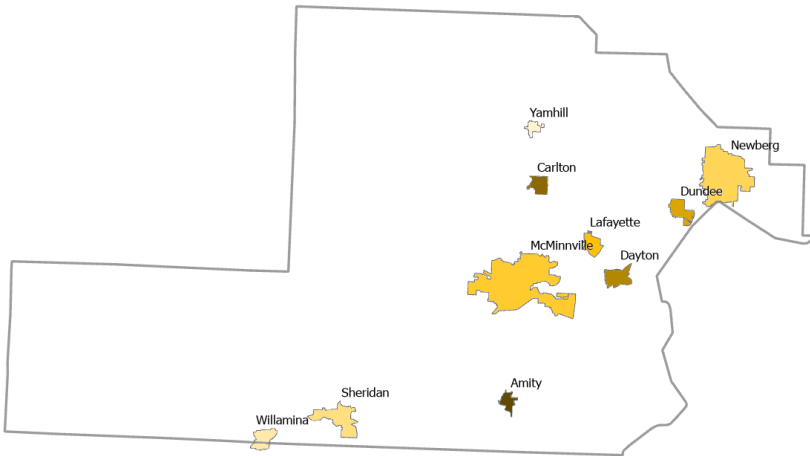
Source: Oregon Employment Department (OED), Local Area Unemployment Statistics (LAUS)

Changes in Jobs per Industry

Yamhill County, September 2024 to September 2025



Source: Oregon Employment Department (OED), Unadjusted Current Employment Statistics



EMPLOYMENT BY URBAN GROWTH BOUNDARY (UGB)

— In 2024, the McMinnville UGB was the largest employment center in Yamhill County, averaging about 16,000 jobs and paying \$836 million in wages, for an annual average wage of \$52,000. Health care and social assistance was its largest industry.

Newberg UGB followed with roughly 11,100 jobs and \$610 million in wages, averaging \$55,000 annually, also led by health care employment.

Among smaller areas, Sheridan UGB stood out for its high average wage of \$75,000, driven by public administration. Willamina UGB also had a relatively high average wage of \$67,000.

Area	Establishments	Average Employment	Total Wages	Average Wage	Largest Industry
Amity UGB	60	360	\$15,722,445	\$43,673	Educational Services
Carlton UGB	89	461	\$23,977,838	\$52,013	Manufacturing
Dayton UGB	68	348	\$18,435,653	\$52,976	Educational Services
Dundee UGB	118	657	\$32,804,646	\$49,931	Manufacturing
Lafayette UGB	123	1,045	\$65,604,333	\$62,779	Public Administration
McMinnville UGB	1,448	15,993	\$835,864,502	\$52,264	Health Care and Social Assistance
Newberg UGB	993	11,127	\$610,198,411	\$54,839	Health Care and Social Assistance
Sheridan UGB	106	986	\$73,701,795	\$74,748	Public Administration
Willamina UGB	50	584	\$39,323,176	\$67,334	Manufacturing
Yamhill UGB	43	265	\$12,300,052	\$46,415	Educational Services

Source: Oregon Employment Department, Quarterly Census of Employment and Wages (QCEW) 2024 geocoded

For more information and/or to be added to the monthly e-mail distribution list, contact:

Henry Fields, Workforce Analyst, Oregon Employment Dept.
henry.i.fields@employ.oregon.gov | Tel.: (541) 359-9178

Join the conversation and stay informed.

[Qualityinfo.org/mid-valley](https://qualityinfo.org/mid-valley)

Contact us for online presentations and speaking engagements.