

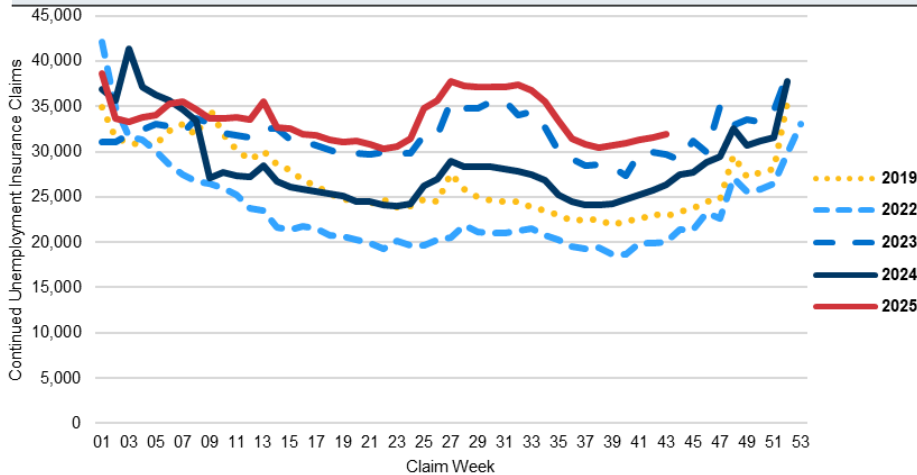


Columbia Gorge Economic Indicators

November 2025

Continued Unemployment Insurance Claims in Oregon

Source: Oregon Employment Department



Continued UI Claims Increased Year-Over-Year in Oregon

Continued claims reflect the current number of insured unemployed workers filing for regular Unemployment Insurance (UI) benefits. This includes workers in private and public organizations covered by unemployment insurance, and includes federal civilian workers covered by Unemployment Compensation for Federal Employees (UCFE).

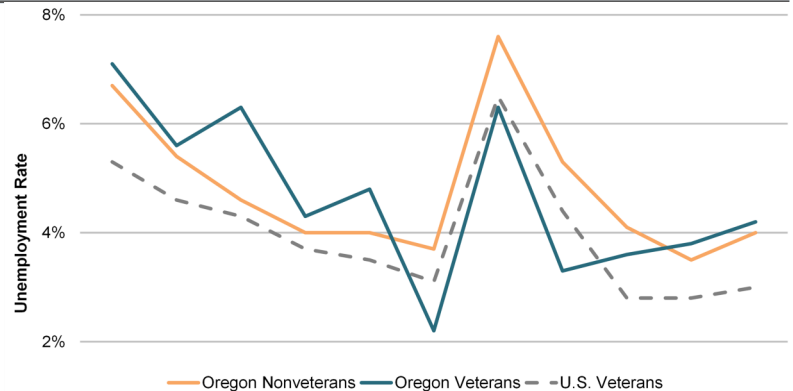
After staying relatively low in 2024, continued claims have remained slightly elevated in 2025. In 2022, Oregon averaged the lowest level of continued claims in recent years, with about 23,500 per week. Oregon is averaging about 33,600 continued claims per week so far in 2025. That's 20% higher than the same period a year ago.

Oregon Veterans Unemployment Rate Compared to Nonveterans and U.S. Veterans

Source: Oregon Employment Department, Bureau of Labor Statistics

The unemployment rate for Oregon veterans was 4.2% in 2024, according to the Current Population Survey. This was slightly higher than the unemployment rate for nonveterans which was 4.0% in the same period. In the U.S. more broadly, veterans had a lower unemployment rate than their Oregon counterparts at 3.0%.

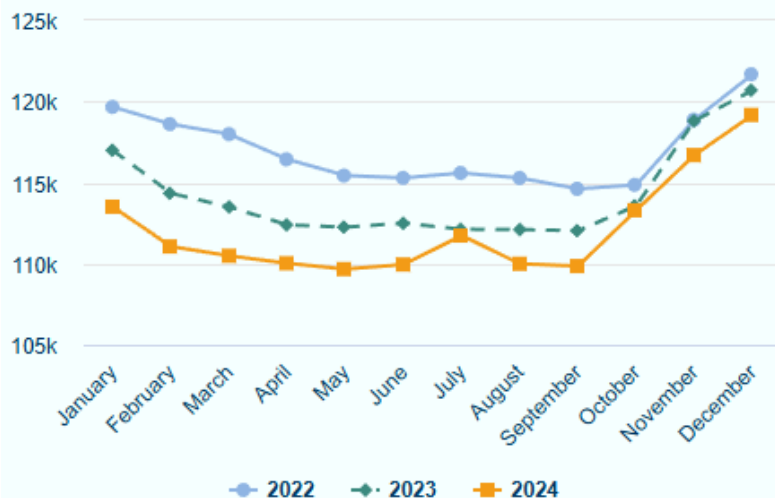
About 232,700 veterans lived in Oregon in 2023 according to the American Community Survey. Of veterans ages 18 to 64, 76.8% participated in the labor force in the same period. This labor force participation rate was lower than Oregonian nonveterans in the same age range (78.6%) and veterans nationally (77.5%).



Graph of the Month

Employment in Holiday Hiring Industries in '22, '23, '24

Source: Oregon Employment Department



Oregon Had A Holiday Buildup of 9,300 Employees in 2024

The 2024 holiday season had a holiday buildup of 9,300 employees, an 8.5% increase from September to December. That's higher than the 8,700 (7.7%) buildup in 2023 and the 7,100 (6.2%) rise in 2022.

At the same time, holiday hiring businesses employed fewer workers throughout 2024, and failed to reach the peak December employment of the previous two years. The December 2024 peak was 1,500 jobs lower than 2023 and 2,500 jobs lower than 2022. The September 2024 base was 2,200 lower than September 2023 and 4,800 lower than 2022.

Want to join the distribution list? Contact: Jake Procino,
Jake.D.Procino@employ.oregon.gov