

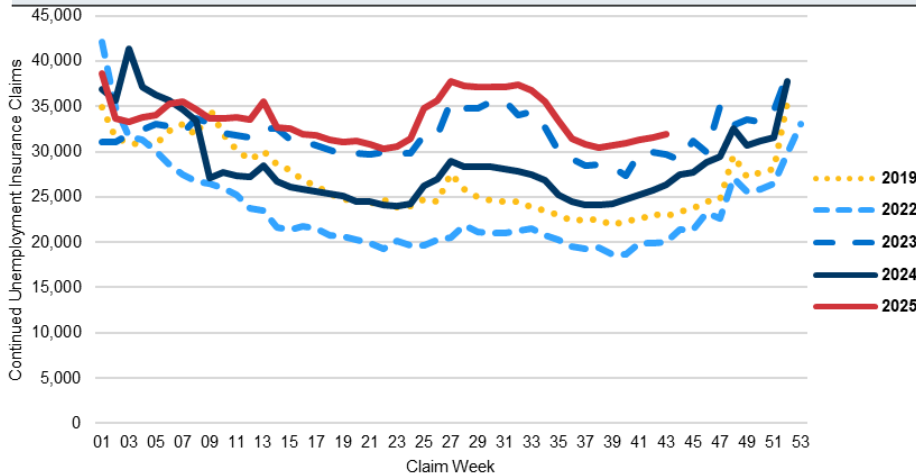


# Central Oregon Economic Indicators

## October 2025

### Continued Unemployment Insurance Claims in Oregon

Source: Oregon Employment Department



### Continued UI Claims Increased Year-Over-Year in Oregon

Continued claims reflect the current number of insured unemployed workers filing for regular Unemployment Insurance (UI) benefits. This includes workers in private and public organizations covered by unemployment insurance, and includes federal civilian workers covered by Unemployment Compensation for Federal Employees (UCFE).

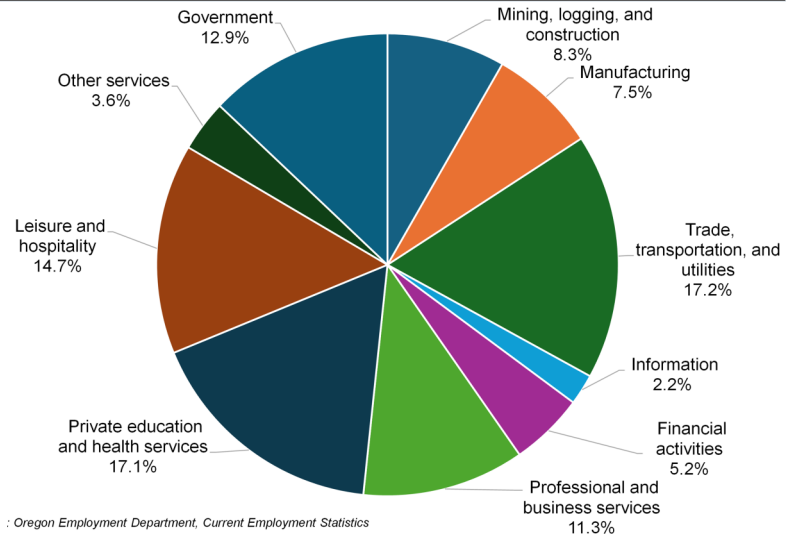
After staying relatively low in 2024, continued claims have remained slightly elevated in 2025. In 2022, Oregon averaged the lowest level of continued claims in recent years, with about 23,500 per week. Oregon is averaging about 33,600 continued claims per week so far in 2025. That's 20% higher than the same period a year ago.

### 2024 Share of Total Employment by Industry, Bend MSA

Source: Oregon Employment Department

Among Central Oregon's private industries, private education and health services and specifically health care and social assistance, which accounts for approximately 93% of employment in this industry – stands out. Together, health care and social assistance now employs over 18,000 workers in Central Oregon, up nearly 180% since 2001. By 2024 private education and health services stood more than one-third above its pre-pandemic level and accounted for 17.1% of all employment in the region, making it the second largest industry of employment, slightly behind trade, transportation, and utilities (17.4%), and ahead of leisure and hospitality (14.7%).

From 2023 to 2024 alone, regional health care added jobs at a faster pace than any other major sector, offsetting losses elsewhere. This local trend mirrors the state where health care has been one of the principal drivers of employment growth.

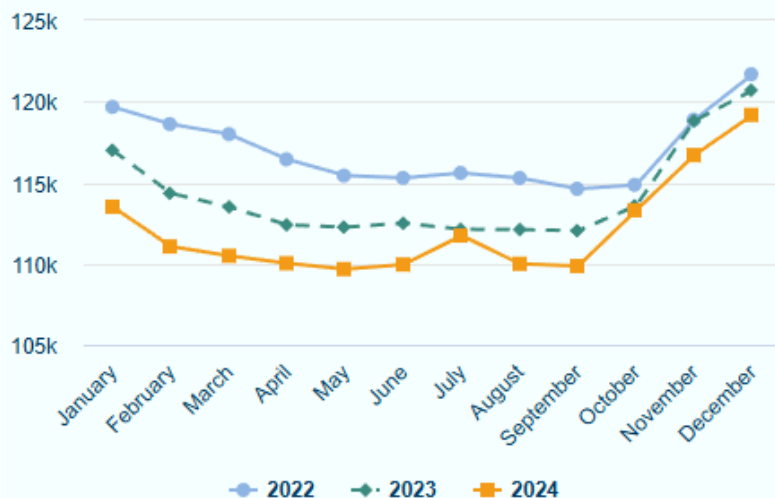


Source: Oregon Employment Department, Current Employment Statistics

### Graph of the Month

#### Employment in Holiday Hiring Industries in '22, '23, '24

Source: Oregon Employment Department



### Oregon Had A Holiday Buildup of 9,300 Employees in 2024

The 2024 holiday season had a holiday buildup of 9,300 employees, an 8.5% increase from September to December. That's higher than the 8,700 (7.7%) buildup in 2023 and the 7,100 (6.2%) rise in 2022.

At the same time, holiday hiring businesses employed fewer workers throughout 2024, and failed to reach the peak December employment of the previous two years. The December 2024 peak was 1,500 jobs lower than 2023 and 2,500 jobs lower than 2022. The September 2024 base was 2,200 lower than September 2023 and 4,800 lower than 2022.

Want to join the distribution list? Contact: Jake Procino,  
[Jake.D.Procino@employ.oregon.gov](mailto:Jake.D.Procino@employ.oregon.gov)