

FOR IMMEDIATE RELEASE: April 7, 2026

CONTACT INFORMATION:  
Guy Tauer, Regional Economist  
Guy.r.tauer@employ.oregon.gov  
(541) 816-8396

## Employment in Douglas County

### Douglas County's Unemployment Rate Held Steady at 6.4% in January

Douglas County's seasonally adjusted unemployment rate was unchanged at 6.4% in January compared with the revised December rate. Over the year, Douglas County's seasonally adjusted unemployment rate increased from 5.5% in January 2025. The Oregon rate was 5.2% and the U.S. rate was 4.3% in January.

Douglas County's seasonally adjusted payroll employment rose by 100 jobs in January after a loss of 70 in December and gain of 30 in November.

In the not seasonally adjusted private-sector industries in January, there were losses in retail trade (-140), leisure and hospitality (-90), construction (-60), and professional and business services (-50).

Government rose by 50 in the month of January from a gain in local education (140) that was countered by a loss of 70 in federal government and 20 jobs in other local government.

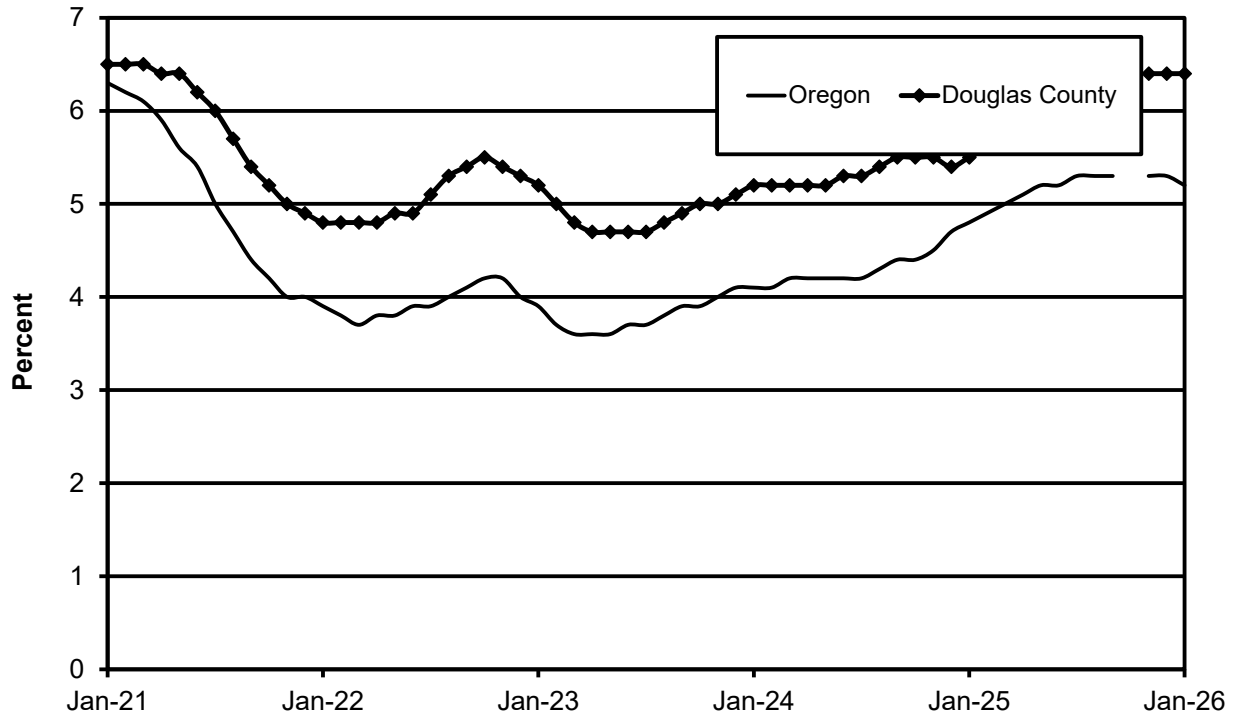
When comparing January 2026 with January 2025, seasonally adjusted total nonfarm employment increased by 140 jobs, or 0.4%. There were private-sector over-the-year gains in private education and health services (180) and leisure and hospitality (70). There were losses estimated in retail trade (-150) and manufacturing (-140).

Government added 150 jobs over the year in January due to gains in local education (120), Indian tribal (20), and other local government (10).

### Next Press Releases

The Oregon Employment Department plans to release the February county and metropolitan area unemployment rates and employment survey data on Tuesday, April 21<sup>st</sup>, and the statewide unemployment rate and employment survey data for February on Wednesday, April 15<sup>th</sup>.

## Seasonally Adjusted Unemployment Rates



The Oregon Employment Department and the U.S. Bureau of Labor Statistics (BLS) work cooperatively to develop and publish monthly payroll employment and labor force data for Oregon’s metropolitan areas and counties. The estimates of monthly job gains and losses are based on a survey of businesses. The estimates of unemployment are based on a survey of households and other sources.

The Oregon Employment Department payroll employment estimates are revised quarterly using information from unemployment insurance tax records. All department publications use data from this *official Oregon series* unless noted.

The department also makes the BLS-produced nonfarm payroll employment series for metropolitan areas available. These are revised annually by BLS.

You can subscribe to receive notification of new articles and publications from QualityInfo.org. To subscribe, go to [www.qualityinfo.org/subscribe](http://www.qualityinfo.org/subscribe), enter your email address and click Sign In. In the Publication section, click on the + sign next to a report type category and then click on the geography(s) you are interested in. Take some time to browse the other publications on the page and see if there are some you’d like to receive an email notification for. You can receive notifications on a daily, weekly, or monthly schedule – whichever is most convenient for you. You can change your preferences – or unsubscribe – at any time.

The pdf version of the news release, including tables and graphs, can be found at [www.qualityinfo.org/press-release/](http://www.qualityinfo.org/press-release/). To obtain the data in other formats such as in Excel, visit

QualityInfo.org, select Tools, and choose LAUS or CES from the dropdown menu. To request the press release as a Word document, contact the person shown at the top of this press release.

To file an Unemployment Insurance claim, visit our online claims system or call our contact centers, where Employment Department staff are ready to help by phone, at 1-877-FILE-4-UI (1-877-345-3484). For help finding jobs and training resources, go to: [www.WorkSourceOregon.org](http://www.WorkSourceOregon.org)

The Oregon Employment Department (OED) is an equal opportunity agency. Everyone has a right to use OED programs and services. OED provides free help. Some examples are: Sign language and spoken language interpreters, written materials in other languages, braille, large print, audio and other formats. If you need help, please call 971-673-6400. TTY users call 711. You can also ask for help at [OED\\_Communications@employ.oregon.gov](mailto:OED_Communications@employ.oregon.gov).

El Departamento de Empleo de Oregon (OED) es una agencia de igualdad de oportunidades. El OED proporciona ayuda gratuita para que usted pueda utilizar nuestros servicios. Algunos ejemplos son intérpretes de lengua de señas e idiomas hablados, materiales escritos en otros idiomas, letra grande, audio y otros formatos. Para obtener ayuda, por favor llame al 503-947-1444. Usuarios de TTY pueden llamar al 711. También puede enviar un correo electrónico a [OED\\_Communications@employ.oregon.gov](mailto:OED_Communications@employ.oregon.gov).



Workforce & Economic Research Division

QualityInfo.org

April 7, 2026

### Douglas County Current Labor Force and Industry Employment

	--Change From--				
	January 2026	December 2025	January 2025	December 2025	January 2025
<b>Labor Force Status</b>					
Civilian labor force	46,630	46,623	46,481	7	149
Unemployed	3,305	2,860	3,114	445	191
Unemployment rate	7.1%	6.1%	6.7%	1.0	0.4
<i>Unemployment rate (seasonally adjusted)</i>	6.4%	6.4%	5.5%	0.0	0.9
Employed	43,325	43,763	43,367	-438	-42
<b>Nonfarm Payroll Employment</b>					
Total nonfarm employment	38,050	38,470	37,900	-420	150
<i>Total nonfarm employment (seasonally adjusted)</i>	38,560	38,460	38,420	100	140
Total private	30,140	30,610	30,140	-470	0
Mining, logging, and construction	2,540	2,600	2,510	-60	30
Mining and logging	850	850	830	0	20
Construction	1,690	1,750	1,680	-60	10
Manufacturing	4,280	4,280	4,420	0	-140
Durable goods	3,830	3,840	3,960	-10	-130
Wood product manufacturing	2,560	2,560	2,610	0	-50
Nondurable goods	450	440	460	10	-10
Trade, transportation, and utilities	6,850	7,090	6,930	-240	-80
Wholesale trade	890	900	880	-10	10
Retail trade	4,470	4,610	4,620	-140	-150
Food and beverage retailers	1,040	1,050	1,080	-10	-40
General merchandise retailers	1,130	1,210	1,150	-80	-20
Transportation, warehousing, and utilities	1,490	1,580	1,430	-90	60
Information	300	290	340	10	-40
Financial activities	1,260	1,270	1,280	-10	-20
Professional and business services	2,830	2,880	2,840	-50	-10
Private education and health services	7,260	7,270	7,080	-10	180
Leisure and hospitality	3,570	3,660	3,500	-90	70
Food services and drinking places	2,870	2,930	2,780	-60	90
Other services	1,250	1,270	1,240	-20	10
Government	7,910	7,860	7,760	50	150
Federal government	1,420	1,490	1,420	-70	0
State government	710	710	710	0	0
Local government	5,780	5,660	5,630	120	150
Indian tribal	1,140	1,140	1,120	0	20
Local education	3,170	3,030	3,050	140	120
Local government excluding education and tribal	1,470	1,490	1,460	-20	10

The most recent month is preliminary, the prior month is revised. Prepared in cooperation with the U.S. Department of Labor, Bureau of Labor Statistics.

Civilian labor force includes employed and unemployed individuals 16 years and older by place of residence.

Employed includes payroll employment, self-employed, unpaid family workers, domestics, agriculture, and labor disputants.

Unemployment rate is calculated by dividing unemployed by civilian labor force.

Nonfarm Payroll Employment: Data are by place of work and cover full- and part-time employees who worked or received pay for the pay period that includes the 12th of the month. The data exclude the self-employed, volunteers, unpaid family workers, and domestics.

###