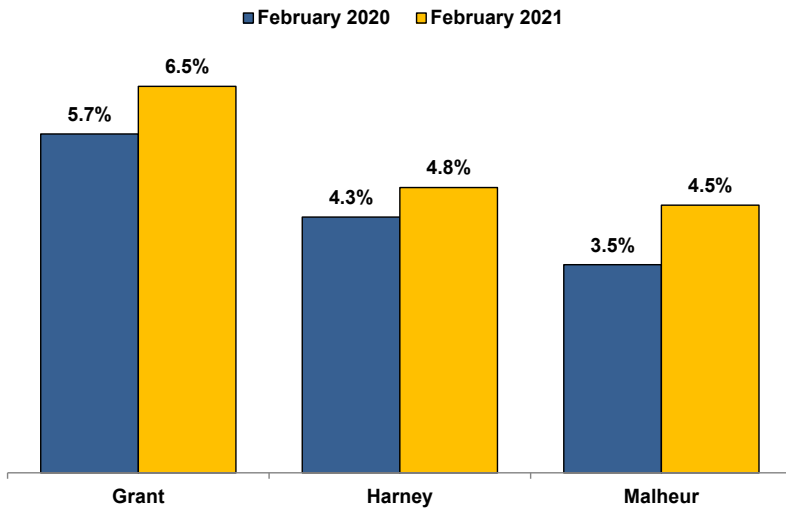


Unemployment Rates (Seasonally Adjusted)



Unemployment Rate News

Malheur County's seasonally adjusted unemployment rate for February 2021 was 4.5%, while Harney County came in at 4.8% and Grant County at 6.5%. Malheur and Harney counties' rates were below Oregon's statewide rate of 6.1% and the national rate of 6.2%.

Malheur County's rate ranked in a tie for third lowest among Oregon's 36 counties for the month while Harney County's ranked seventh and Grant County's sat at 22nd.

All three counties had higher seasonally adjusted unemployment rates in February 2021 than the previous February due to the effects of COVID-19.

Harney County (+0.5 percentage point) ranked fifth among Oregon's counties for smallest over-the-year change while Grant County (+0.8) ranked seventh and Malheur County (+1.0) sat in a tie for eighth.

Nonfarm Employment Change

February 2020 to February 2021

Grant County lost an estimated 70 jobs over the year. The private sector dropped 60 jobs led by losses in mining and logging and construction. Gains were limited to wholesale trade and transportation, warehousing, and utilities. The public sector lost 10 jobs with a loss in local government overcoming a gain in state government.

Harney County added an estimated 20 jobs over the year. The private sector gained 30 jobs led by gains in professional and business services and education and health services. The public sector lost 10 jobs with losses in local and federal government overcoming a gain in state government.

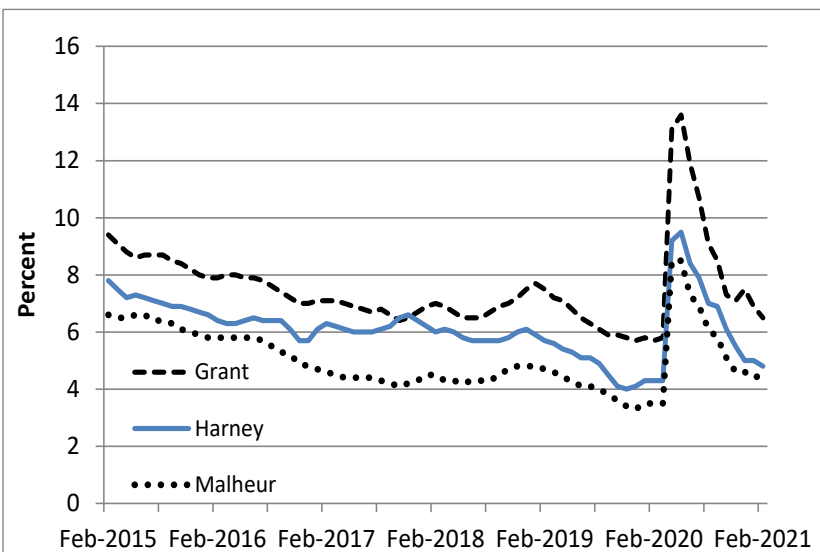
Malheur County employment decreased by an estimated 290 jobs over the year. The private sector dropped 180 jobs led by losses in education and health services, leisure and hospitality, and information. Gains were led by retail trade. The public sector dropped 110 jobs with a loss in local government overwhelming a gain in state government.

Notable Industry Gains and Losses

Over-the-Year Employment Change from February 2020

Grant	Harney	Malheur
State Government (+20)	Professional/Business Services (+20)	Retail Trade (+140)
Wholesale Trade (+10)	Private Education/Health Services (+20)	State Government (+20)
Transportation/Warehousing/Utilities (+10)		Mining/Logging/Construction (+10)
Local Government (-30)	Wholesale Trade (-10)	Private Education/Health Services (-130)
Mining/Logging (-20)	Financial Activities (-10)	Local Government (-130)
Construction (-20)	Local Government (-10)	Leisure/Hospitality (-50)
Manufacturing (-10)	Federal Government (-10)	Information (-40)
Information (-10)		Professional/Business Services (-30)
Financial Services (-10)		

Unemployment rate dropping after sharp rise due to COVID-19



Want to learn more about the Oregon economy?

Read our blog at: oregonemployment.blogspot.com/

Follow us on Twitter at: [Twitter.com/OED_Research](https://twitter.com/OED_Research)

Visit our web site at: QualityInfo.org

Visit our subscription service at: qualityinfo.org/p-sofrm

For more economic or labor market data about Grant, Harney or Malheur counties, contact:

Tony Wendel, Workforce Analyst

Desk: 541-276-9050 ext. 232 Cell: 541-667-7027

E-mail: Tony.A.Wendel@oregon.gov

Chris Rich, Regional Economist

Desk: 541-963-7111 ext. 226 Cell: 541-519-0315

E-mail: Christopher.M.Rich@oregon.gov

Want to be added to the monthly distribution list?

E-mail me at: Tony.A.Wendel@oregon.gov