

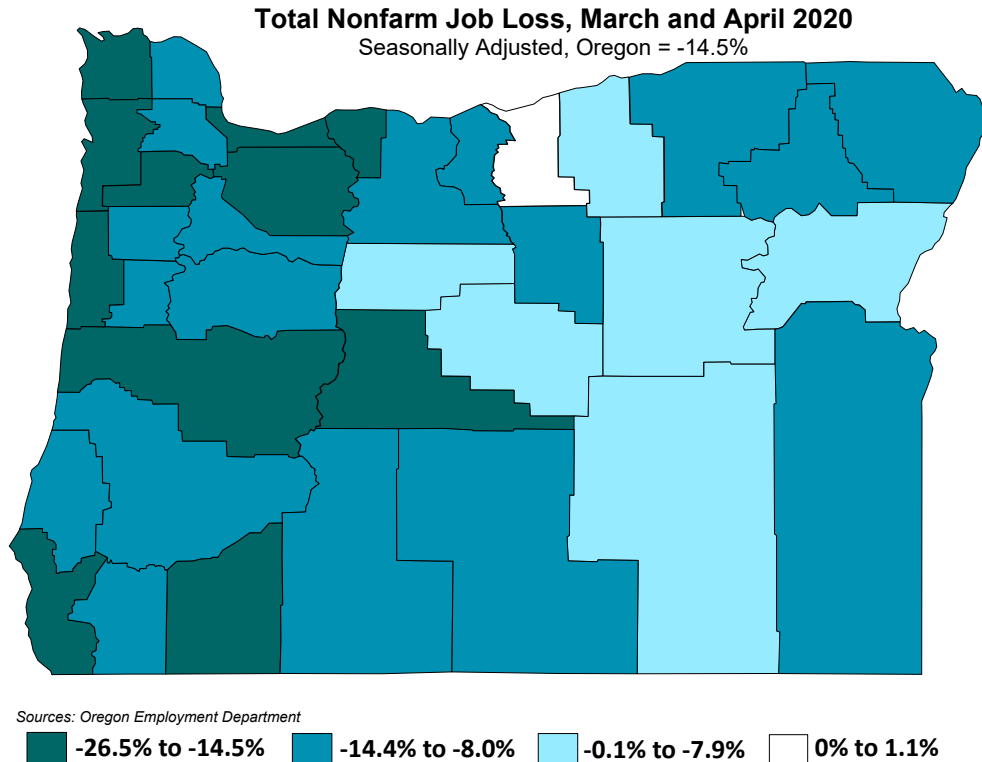


Wasco County BOCC Meeting

February 17, 2021



Oregon lost 285,000 nonfarm payroll jobs (-14.5%) in March and April.



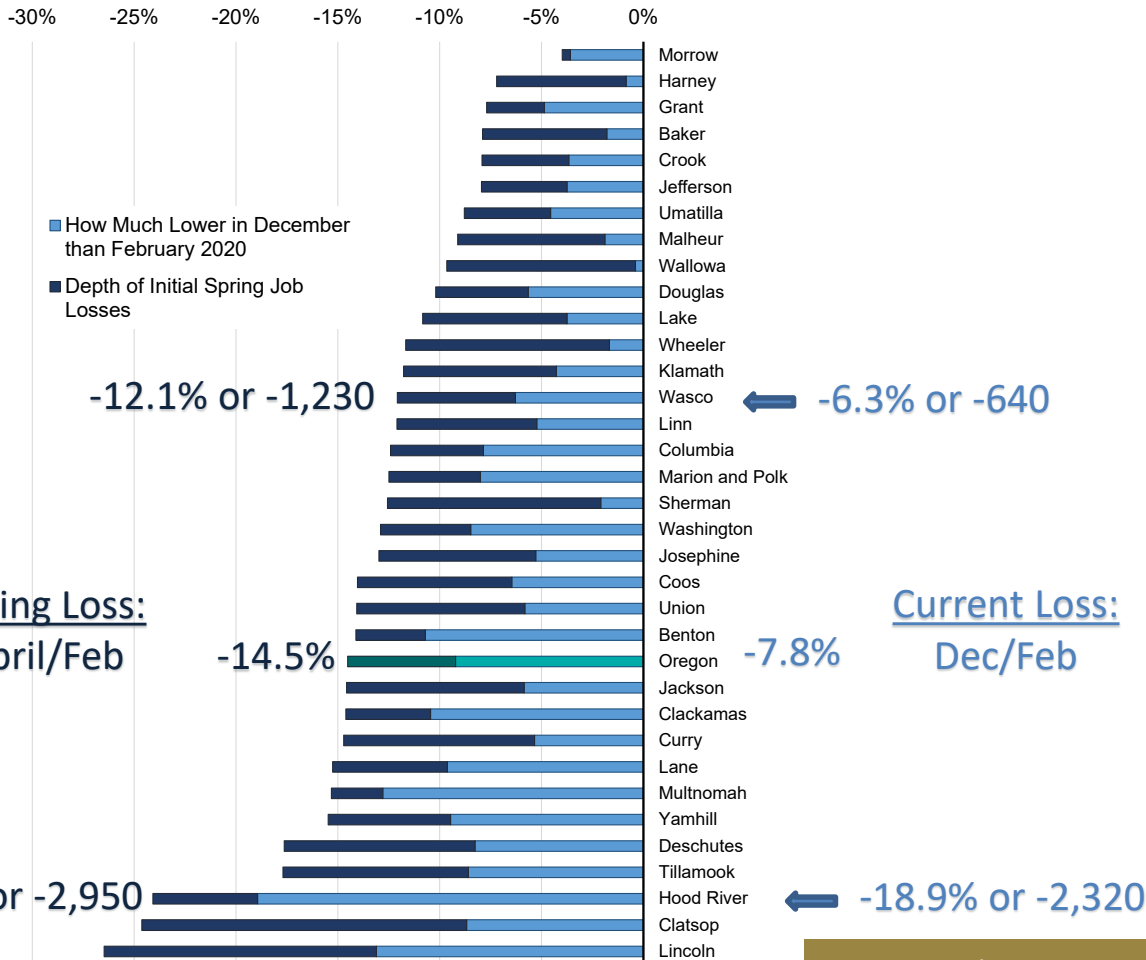
In the Great Recession, Oregon lost roughly **150,000 jobs on net over the course of a couple of years.**

In the COVID-19 recession the North Coast, Hood River, and Jefferson counties took the largest initial job losses (more than 15%).



Pandemic Recession Job Loss and Recovery in Oregon

Seasonally Adjusted, February to December, 2020



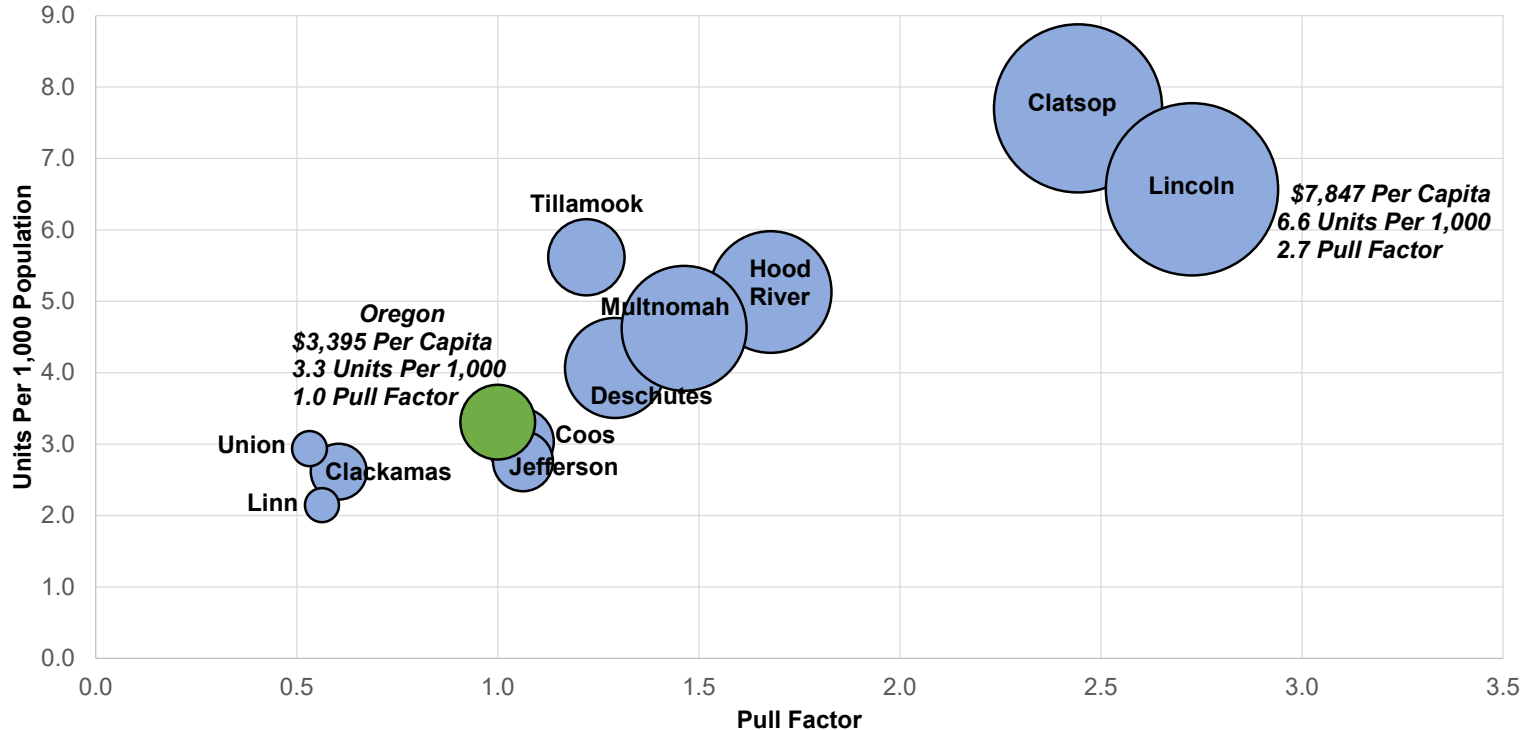
The jobs recovery is underway, but far from complete.

A comparison of job losses and recovery to date shows the depth of short-term and now more long-lasting job losses in metropolitan and rural counties alike.

Oregon has regained 37% of its recession losses

Counties with the Biggest Leisure and Hospitality Footprint

Leisure and Hospitality, 2017: Per Capita Sales,
Units Per 1,000 Population & Pull Factor or Trade Area Captured

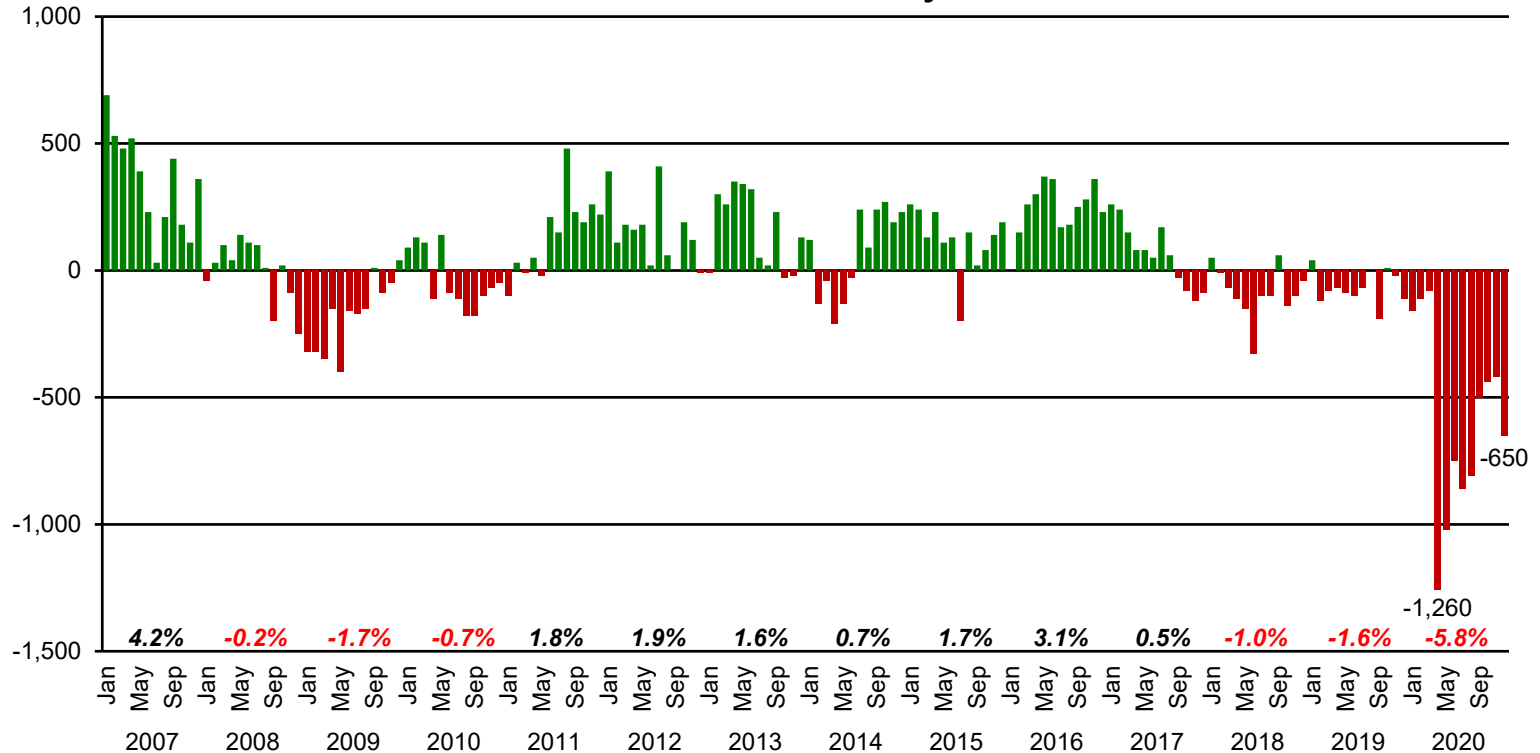


Sources: Oregon Employment Department, Census Bureau & American Community Survey



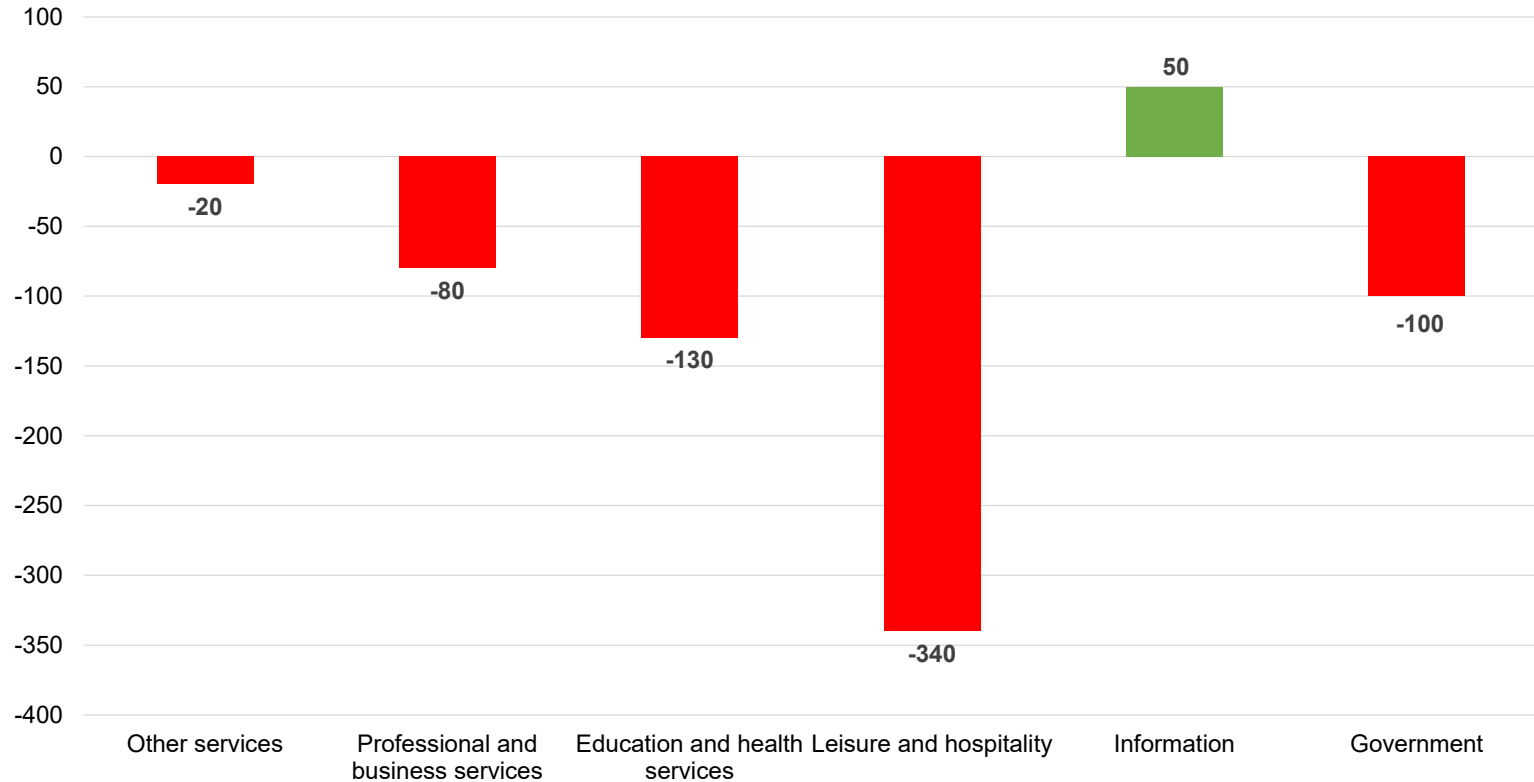
Wasco County: Annual Average Job Loss of About -5.8% in 2020

Year-Over-Year SA Non Farm Job Growth or Decline, Wasco County



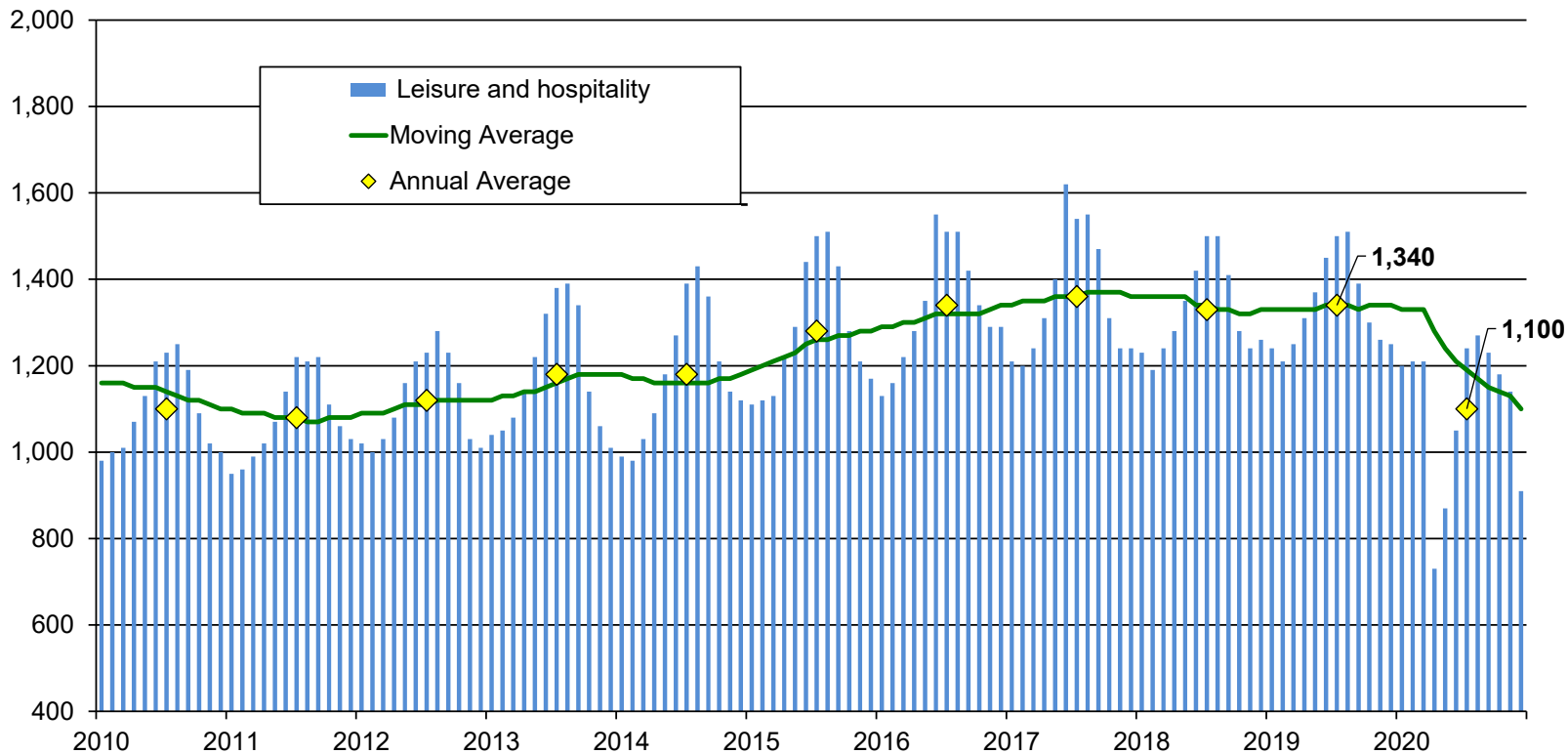
Current Impact: December 2020 OTY Loss of +590 Jobs or 5.9%

Wasco County: December 2020 OTY Job Losses by Industry



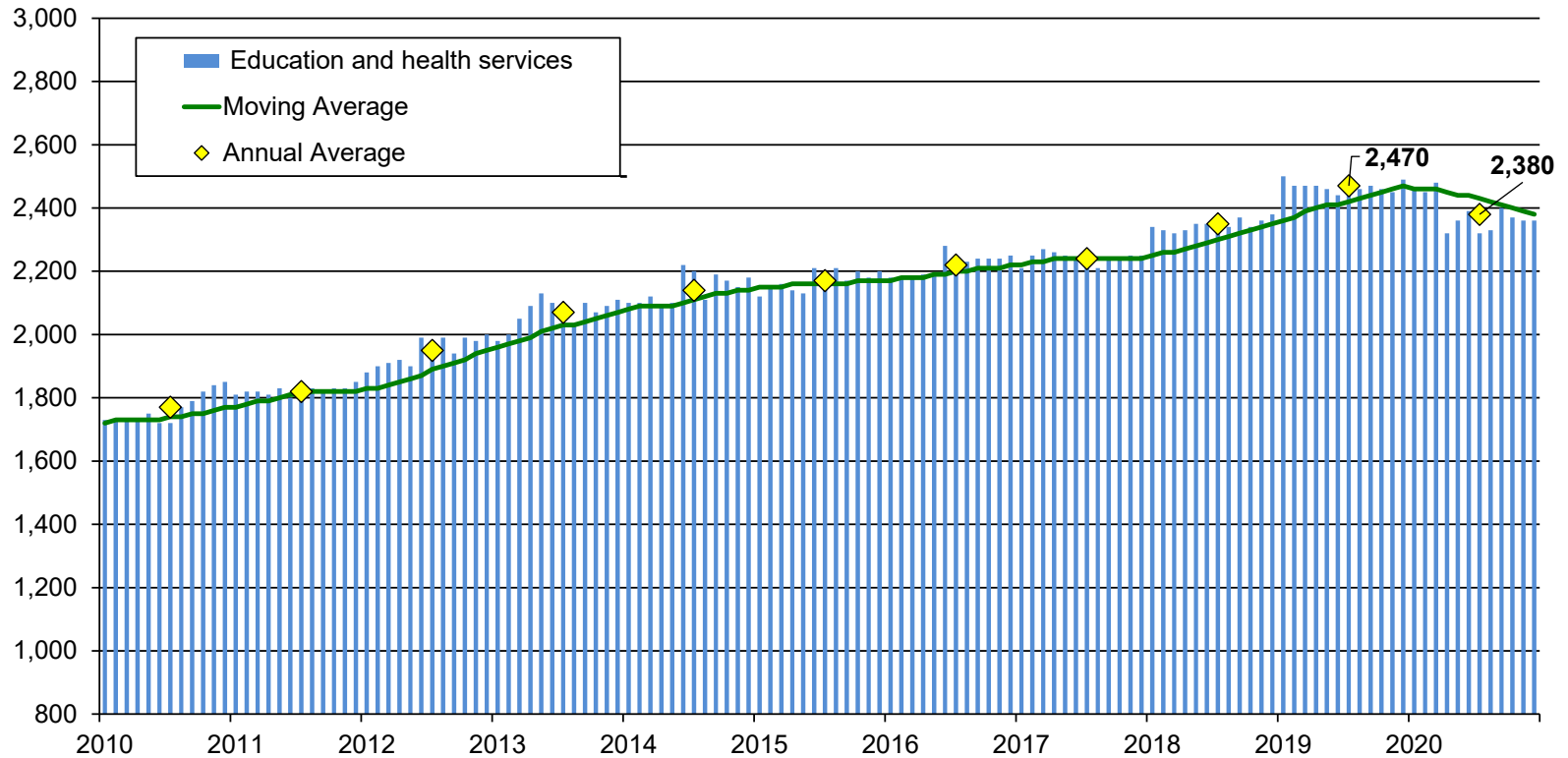
Leisure and Hospitality: lost 240 jobs in 2020 -17.9%

Wasco County L&H Employment, 2010 - 2020



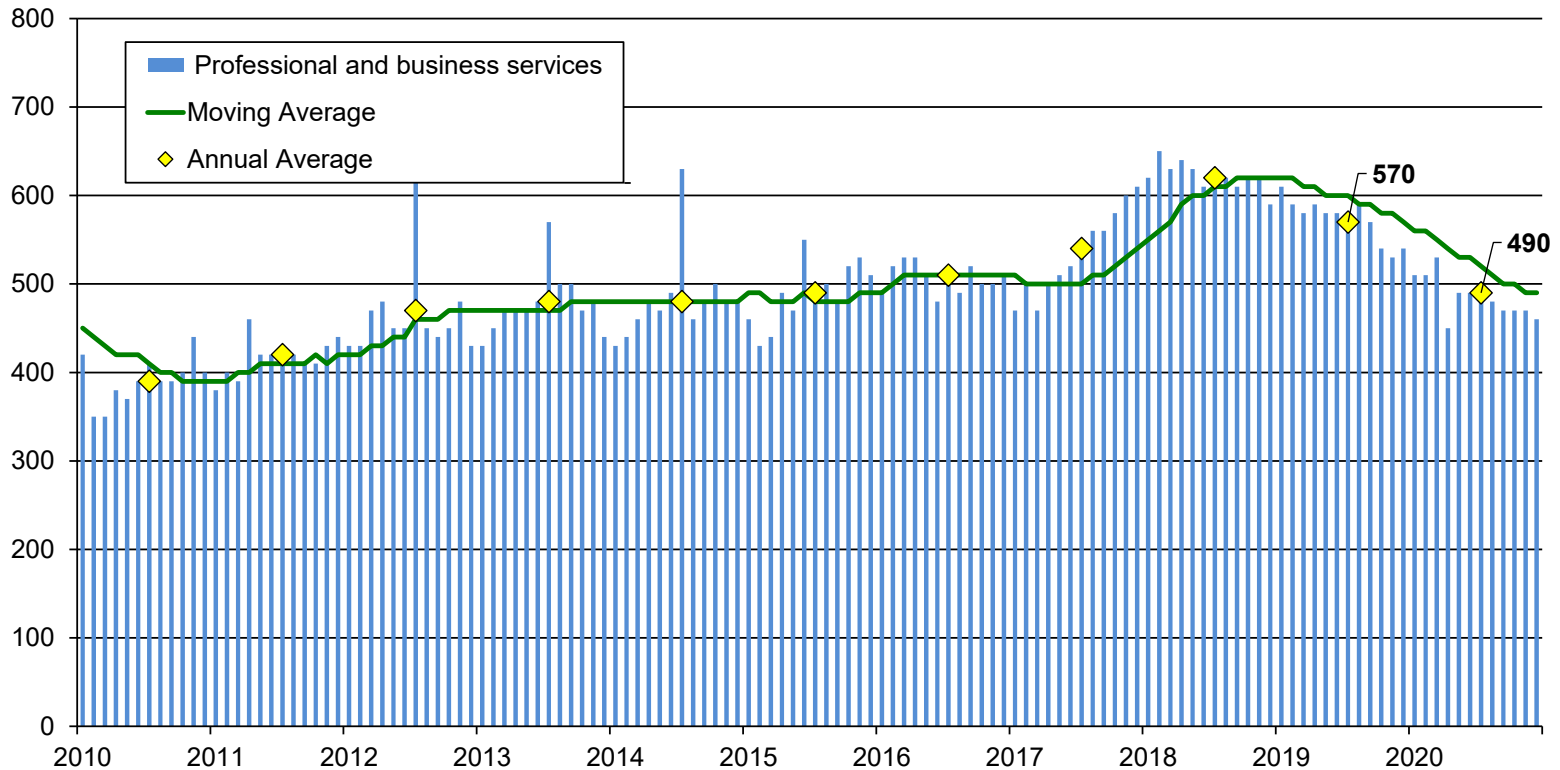
Education and Health Services: lost 90 jobs in 2020 -3.6%

Wasco County Education and Health Services Employment, 2010 - 2020



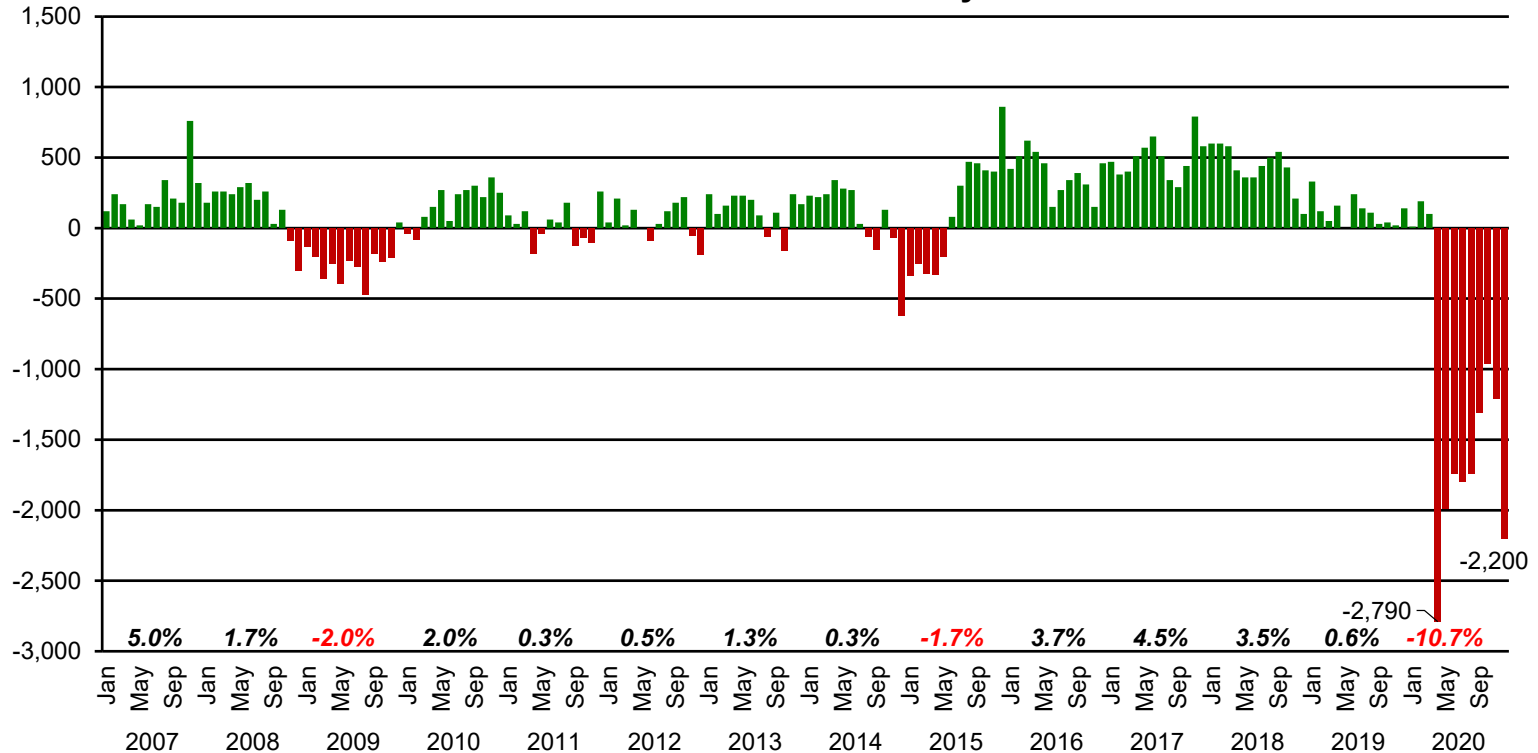
Professional and Business Services: lost 80 jobs in 2020 -14%

Wasco County PBS Employment, 2010 - 2020



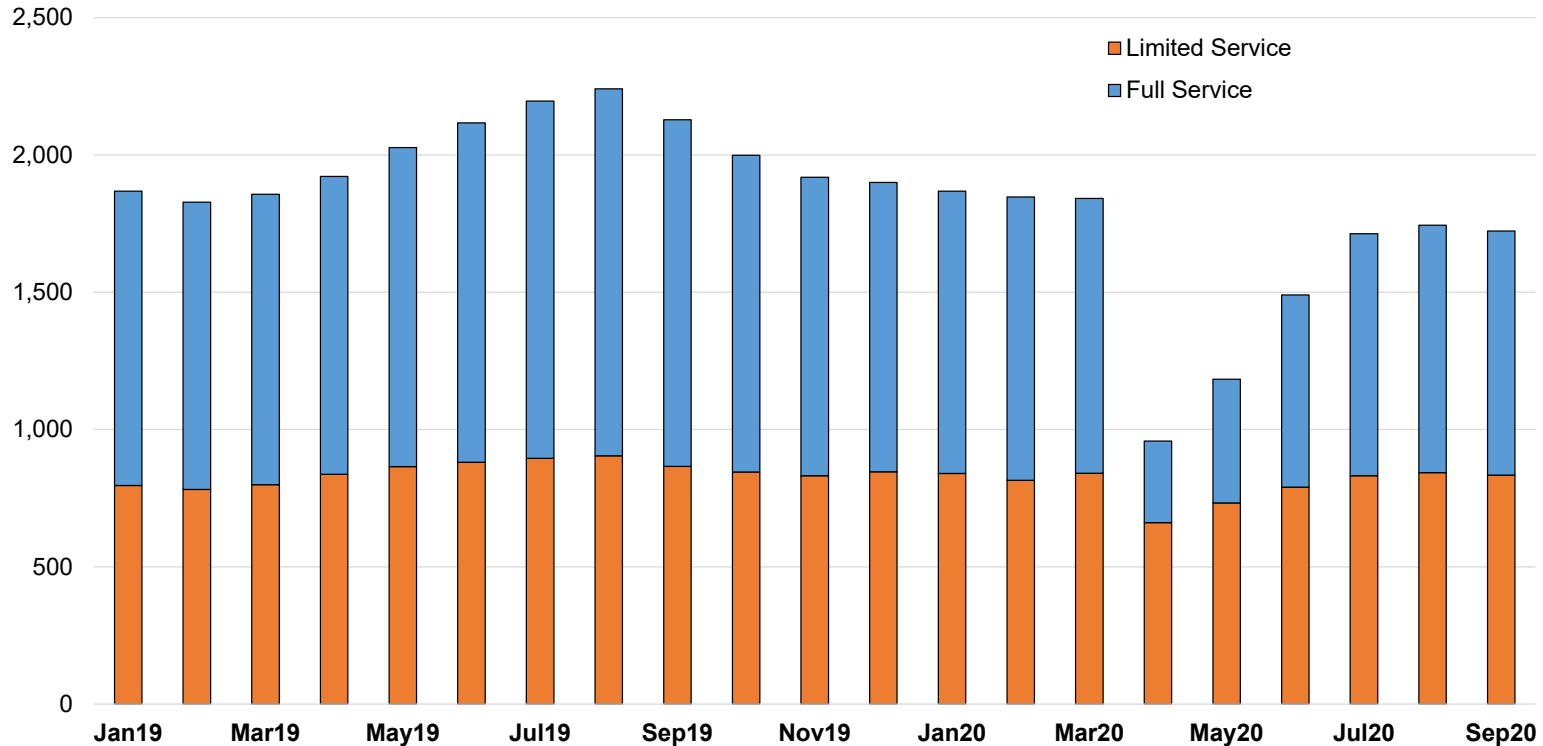
Hood River County: Annual Average Job Loss of About -10.7%

Year-Over-Year SA Non Farm Job Growth or Decline,
Hood River County



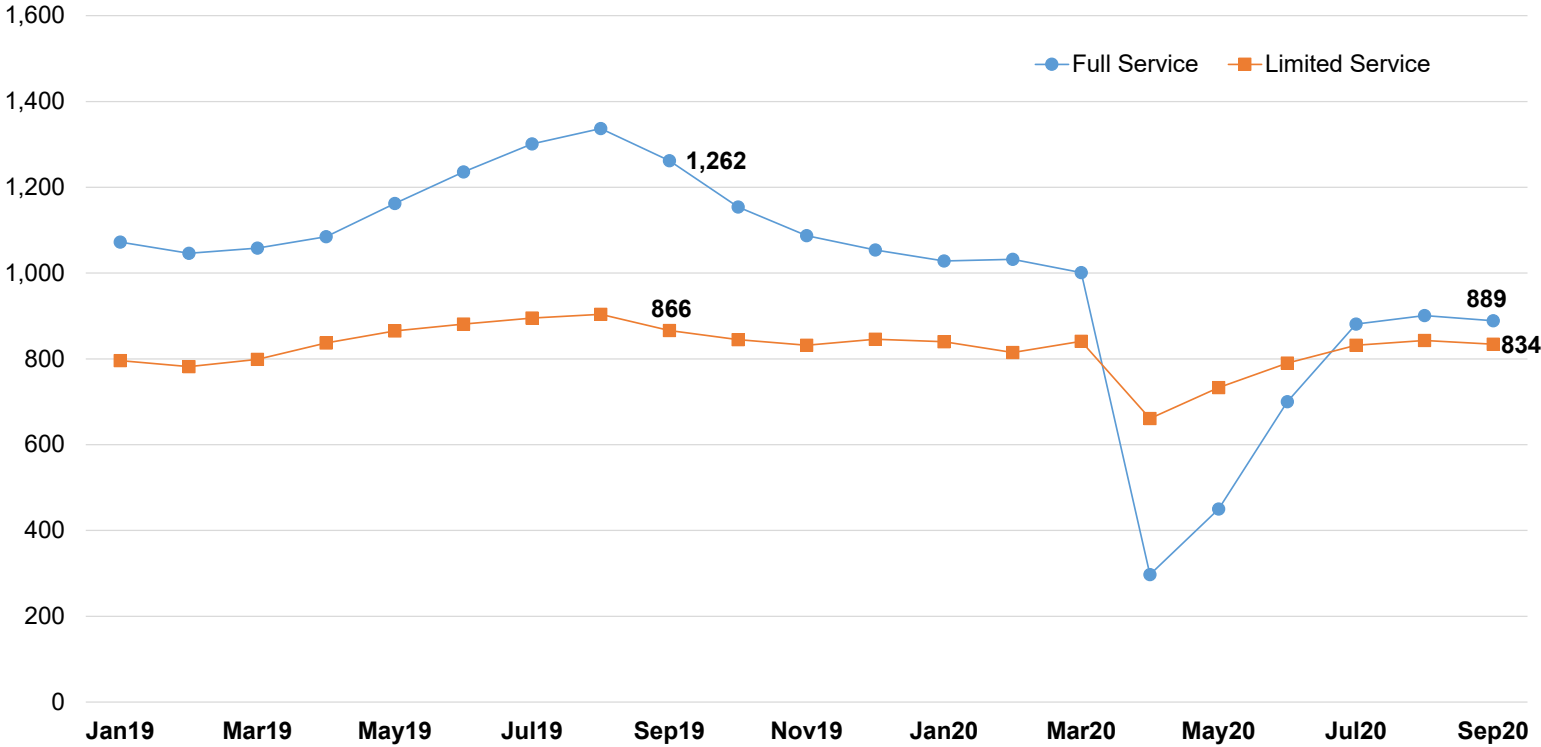
Limited Service Regained Much of Its Job Losses...

**Full Services and Limited Service Restaurant Employment:
Hood River & Wasco Counties**



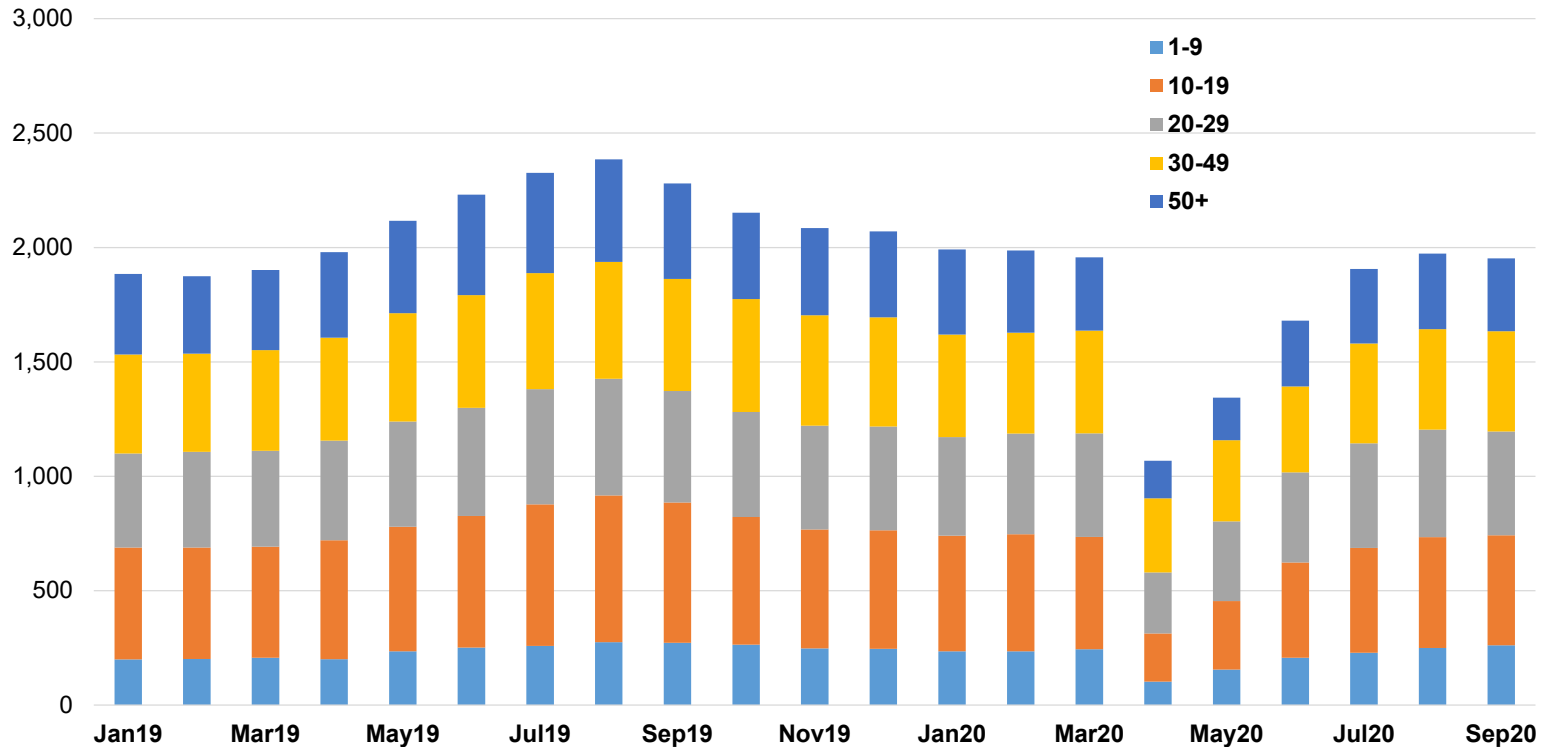
Restaurants Held Steady Over July-Sept

Full Services and Limited Service Restaurant Employment: Hood River & Wasco Counties



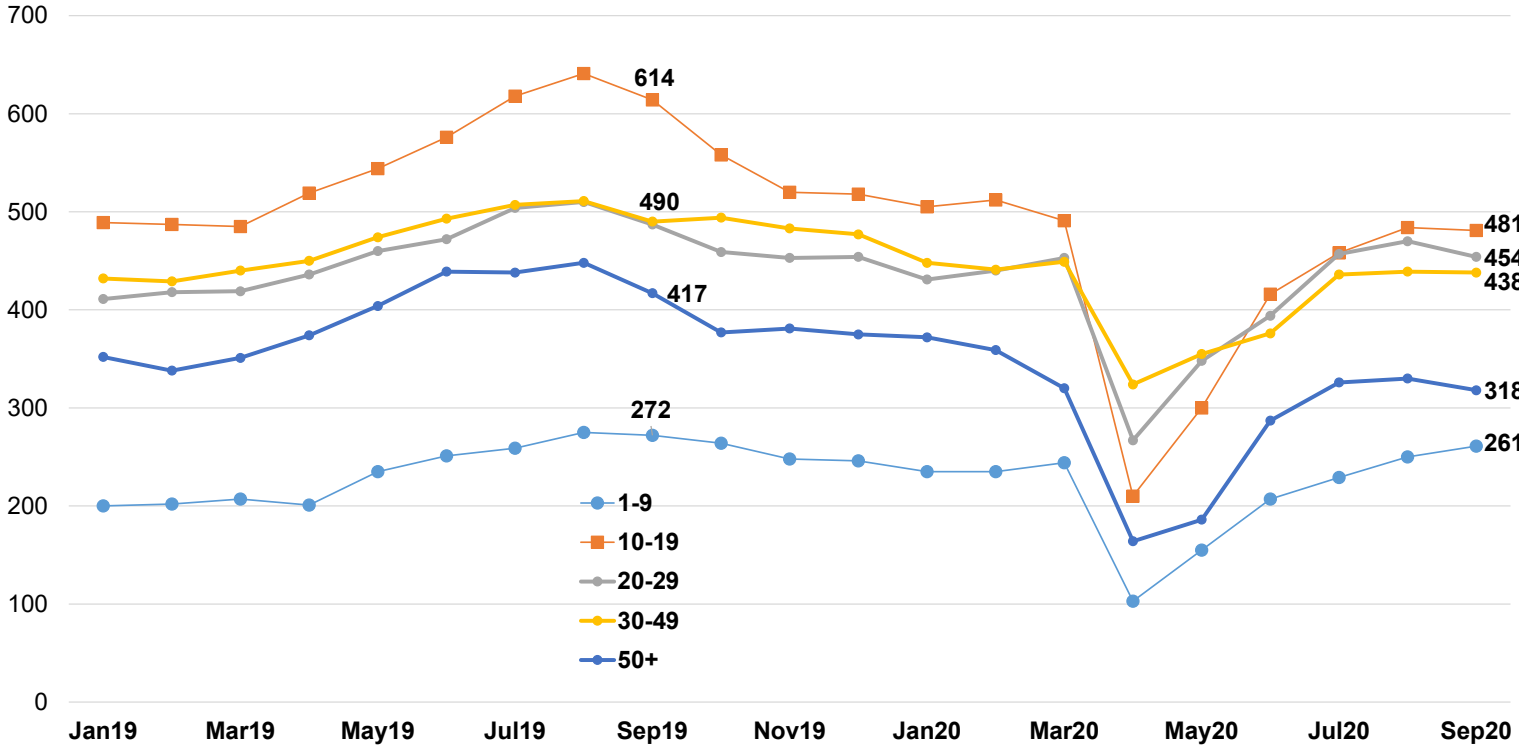
Food Service and Drinking Places By Size Class...

Food Services and Drinking Places by Size Class:
Hood River & Wasco Counties

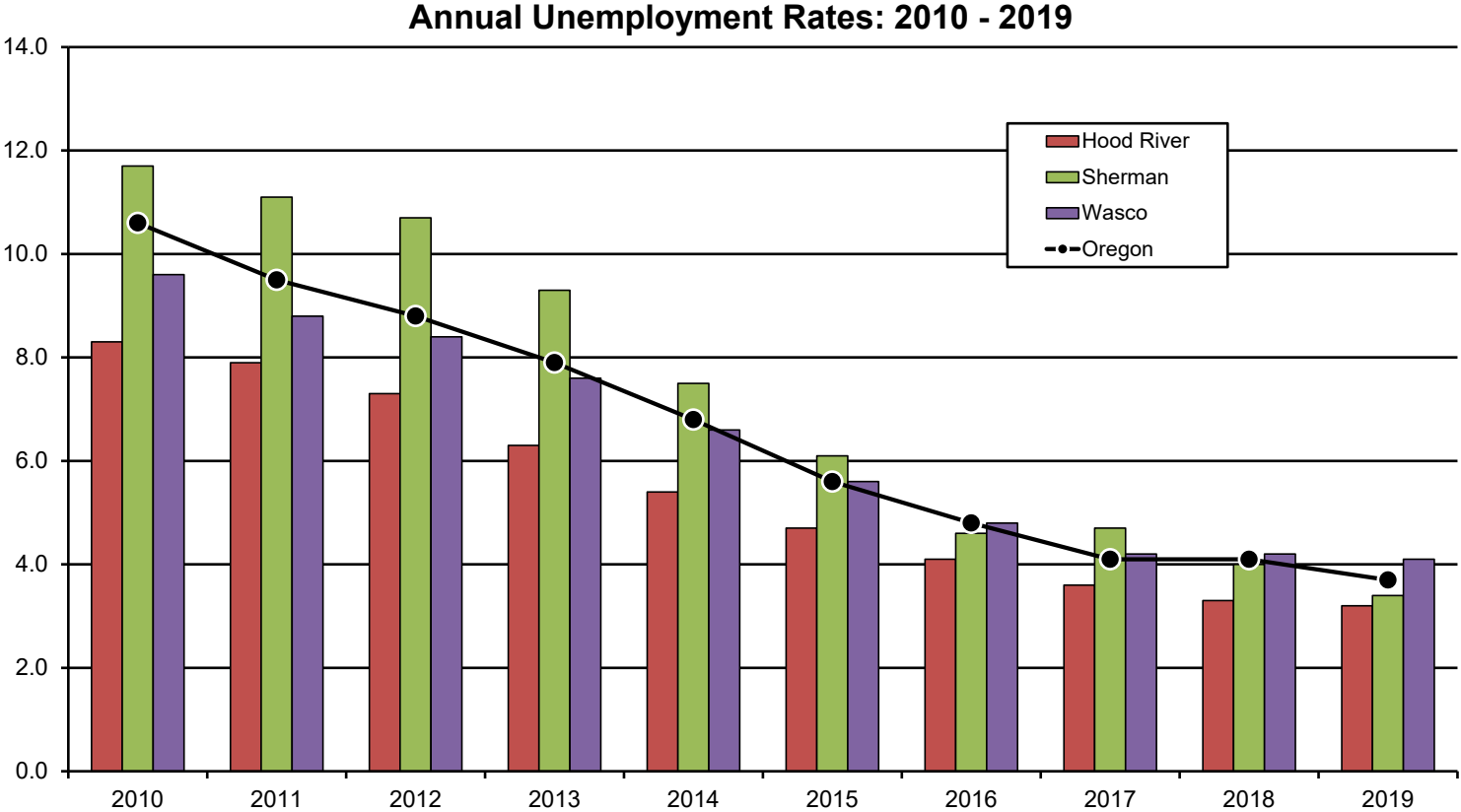


Establishments in the +50 and 10-19 Job Categories Hardest Hit

Food Services and Drinking Places by Size Class:
Hood River & Wasco Counties

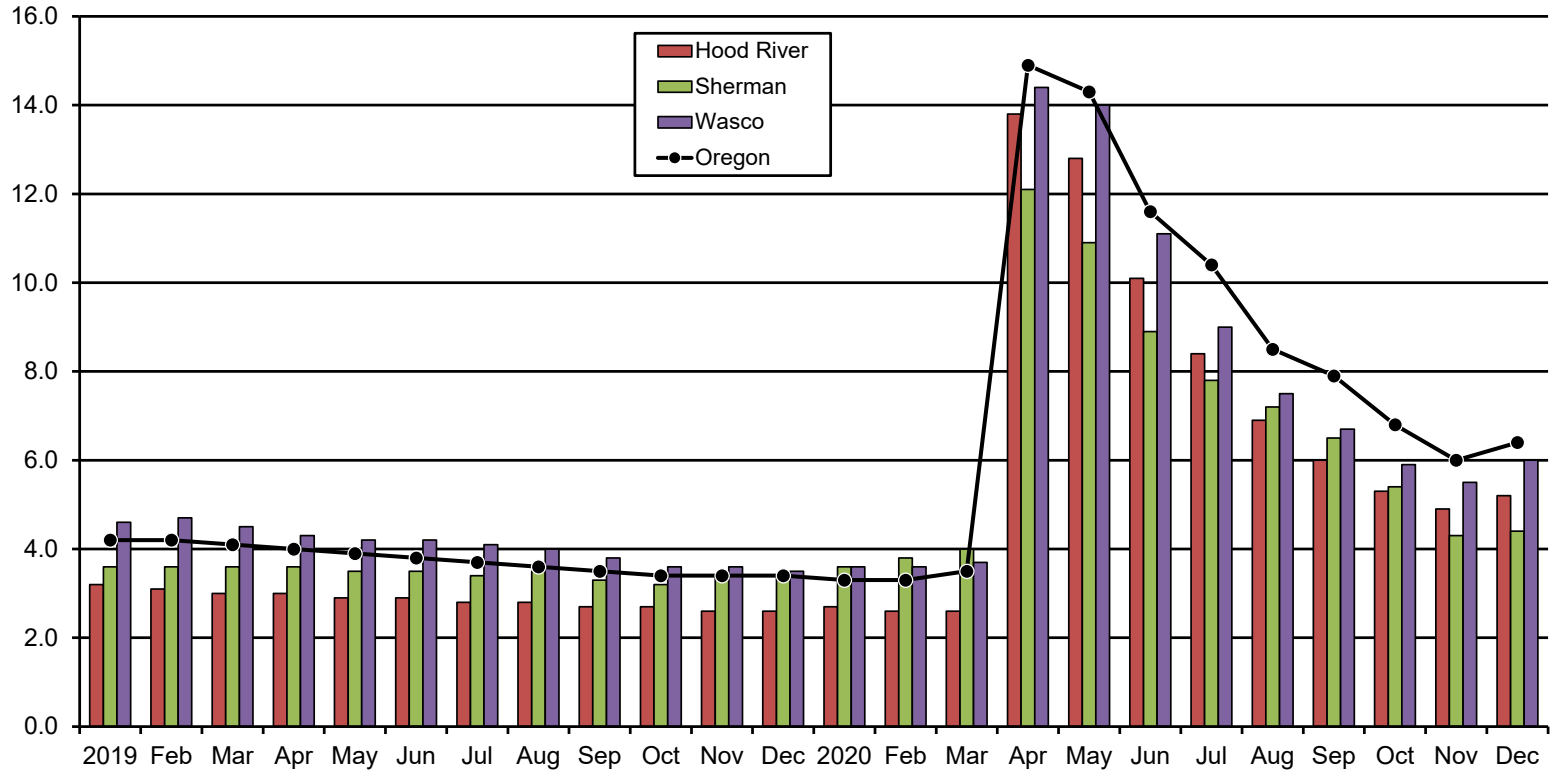


Annual Unemployment Rates Since 2010 Compared with Oregon



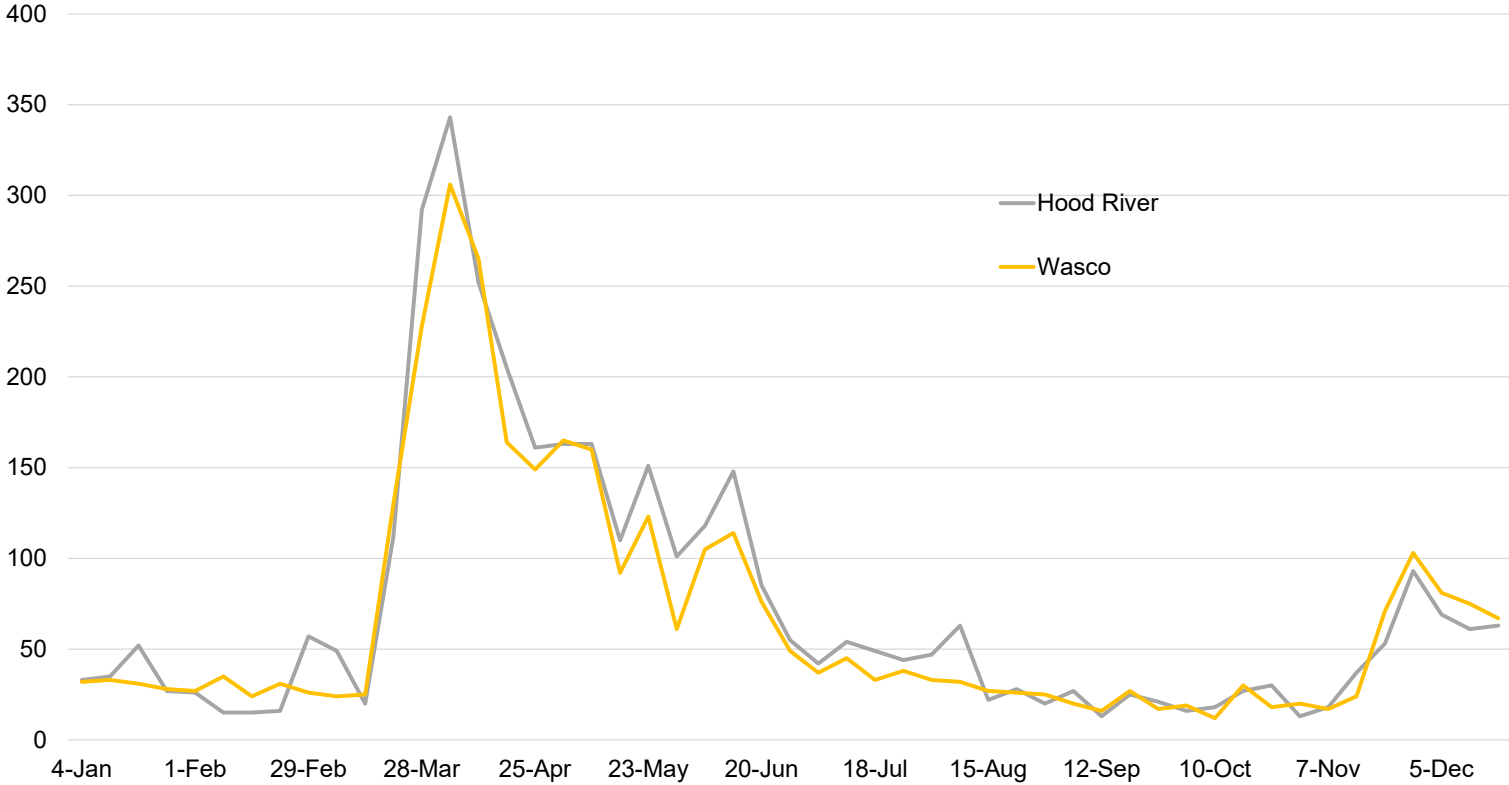
Monthly Unemployment Rates in 2020 Below Oregon's As Recovery Begins...

Seasonally Adjusted Monthly Unemployment Rates: 2019 - 2020



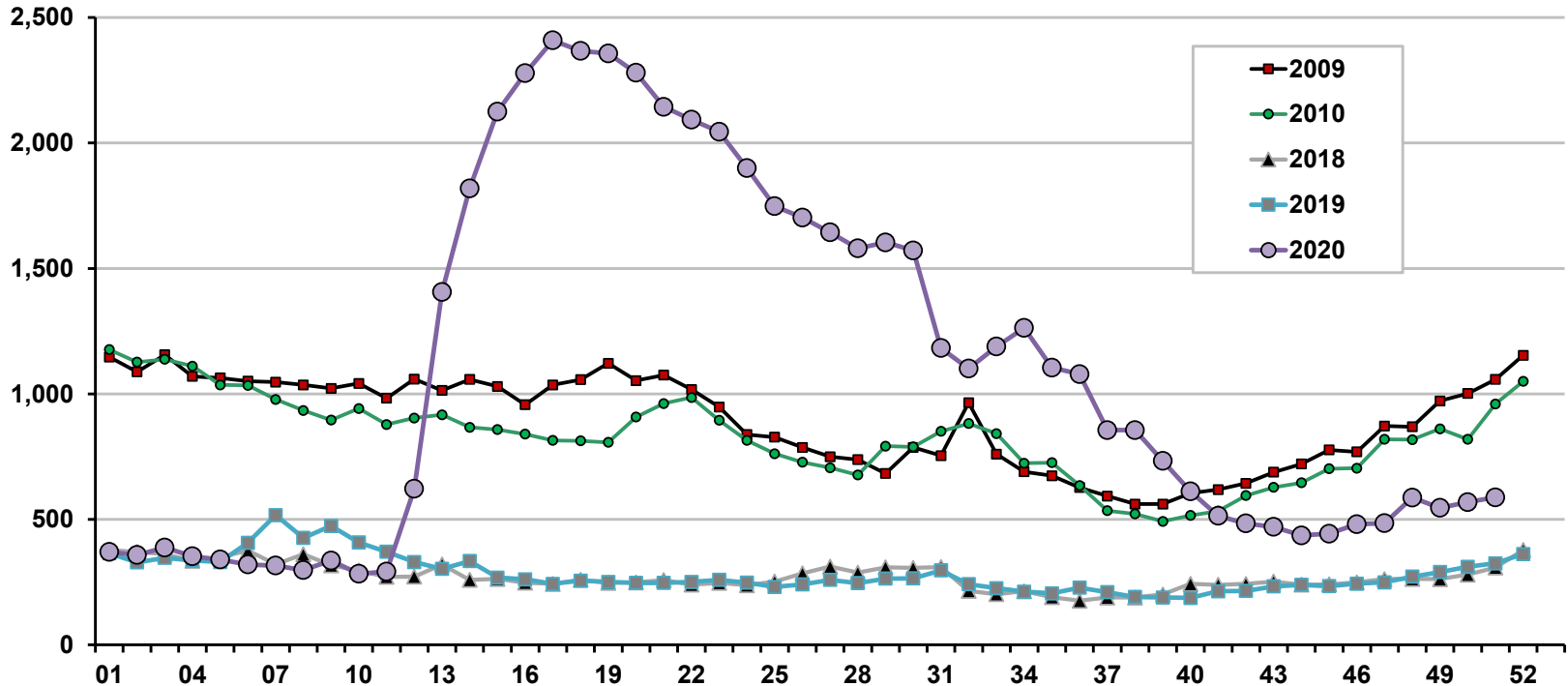
Initial Claims Rose in Late November and Early December

Initial Claims for Regular Unemployment Benefits by Week Ending Date in 2020



Great Recession Highs Compared with 2018-2020

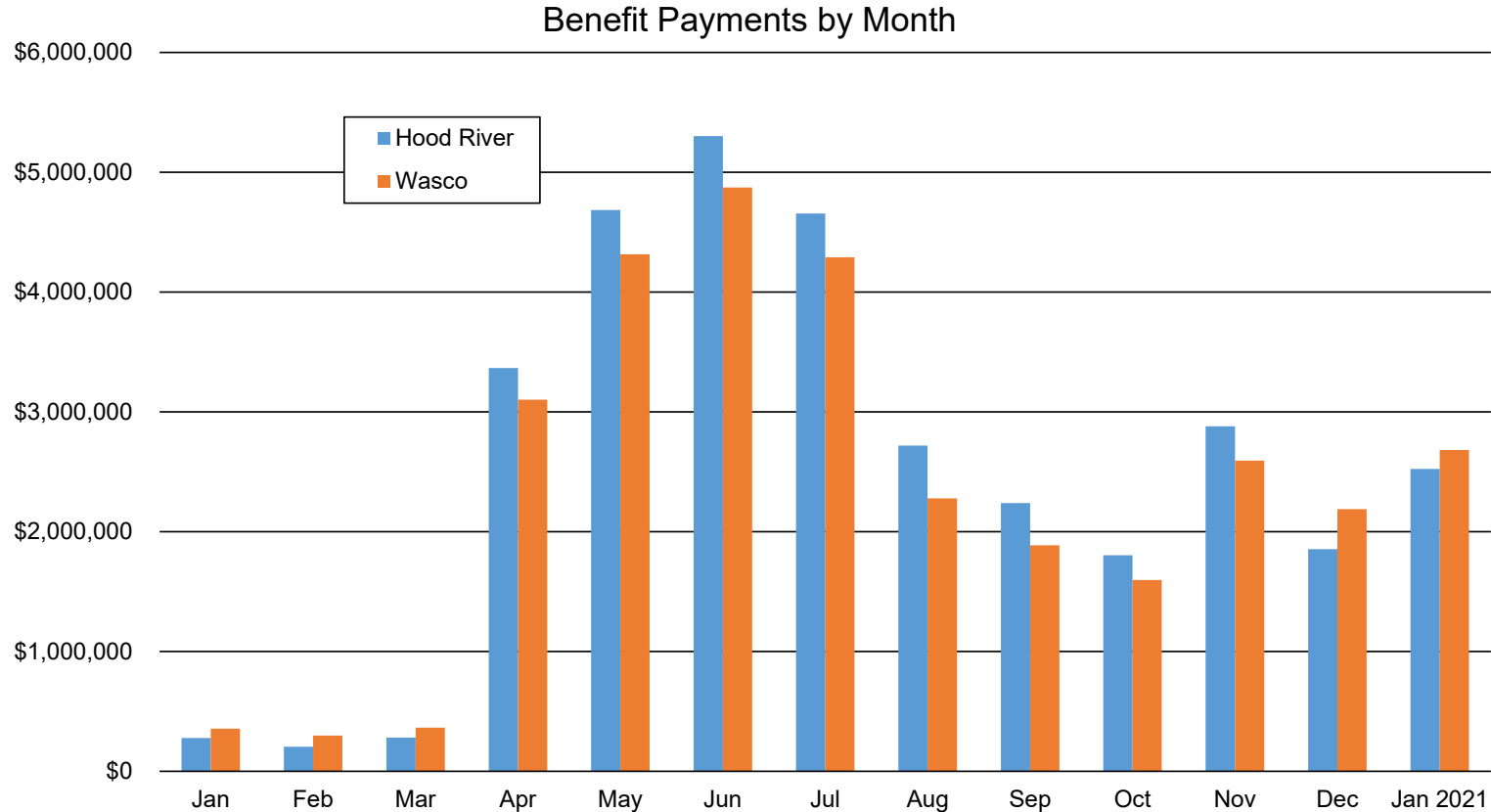
Columbia Gorge Regular Unemployment Insurance Claims by Week: 2009-2010 & 2018-2020



Sources: U.S. Bureau of Labor Statistics, Oregon Employment Department



\$61.8 Million Paid over April 2020 – January 2021





Dallas W. Fridley, Regional Economist

Dallas.W.Fridley@Oregon.gov

Cell: 541-645-0005

Get the latest workforce and economic research delivered to your inbox!

Sign up at <https://www.qualityinfo.org/p-sofrm/>

Join the conversation:

OregonEmployment.Blogspot.com

Twitter [@OED Research](https://twitter.com/OED_Research)

